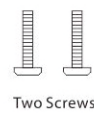


Tenda®



Wireless N300 Wall-mount Access Point Quick Installation Guide

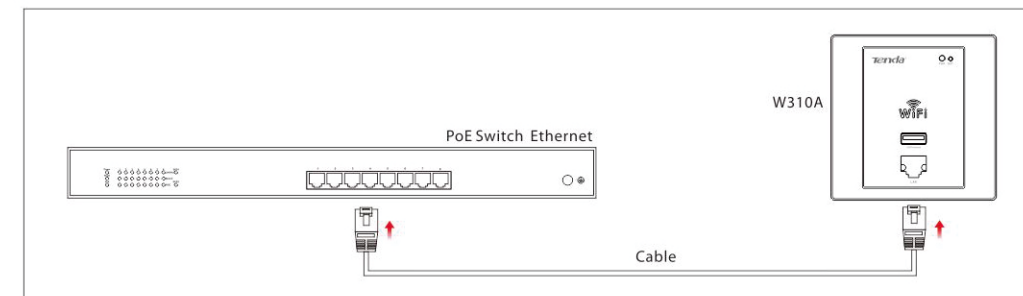
1 Package Contents



2 LED Status

LED	Color	Status	Description
PWR	Green	Solid	Device is connected to power supply
		Blinking	Device is functioning properly
		Off	Device is disconnected from power supply or malfunctioning

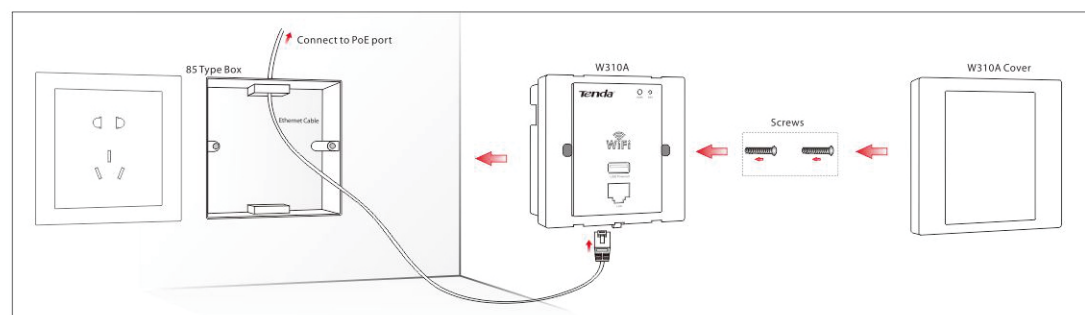
3 Network Topology



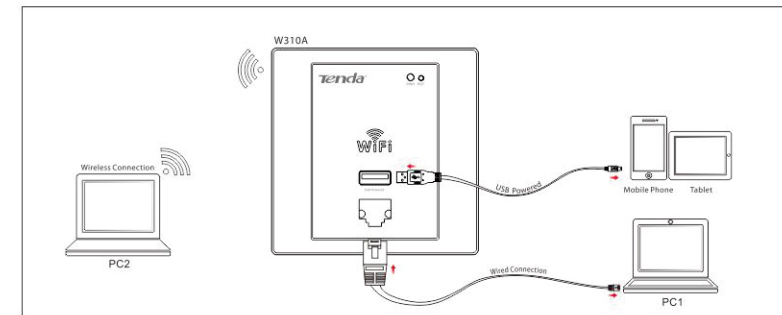
System Requirements: Microsoft Windows XP, Windows Vista, Windows 7, Windows 8 WEB Browser: IE explorer 6.5 and higher, Mozilla Fox, Opera, Google Chrome.

4 Hardware Install

Connect Ethernet cable to the device as seen in figure below (Note: Make sure you leave a proper length of Ethernet cable, say, 5-8cm, inside the box.)

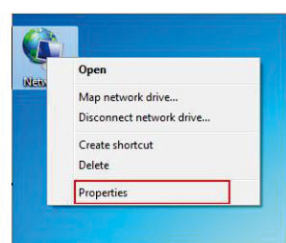


You can connect to the device wirelessly or via a wired connection. The USB port on the device can be used to power terminals like iPad, iPhone, etc.

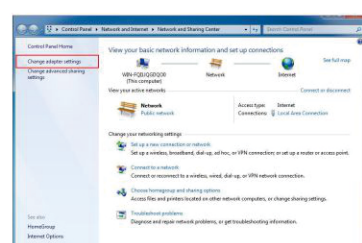


5 Configure PC If you're using Windows 7, do as follows (Screenshots here in Windows 7 are similar to those in Windows XP):

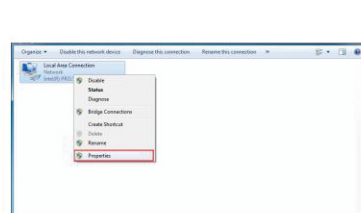
A. Right click Network and select Properties as seen below; or click Start-> Control Panel-> Network and Internet-> Network and Sharing Center.



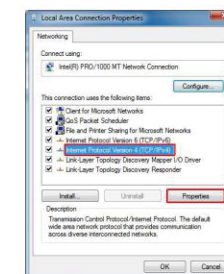
B. Click Change adapter settings.



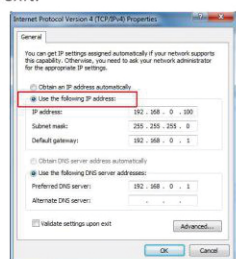
C. Right click Local Area Connection and select Properties.



D. Select Internet Protocol Version 4 (TCP/IPv4) and click Properties.

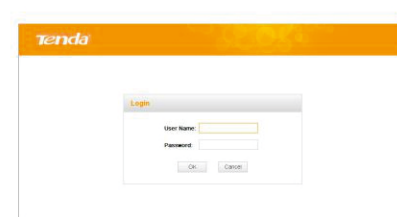


E. Select Use the following IP address. IP Address: 192.168.0.x (where x can be any number between 2-253) Subnet mask: Enter 255.255.255.0. Gateway: Enter 192.168.0.1. Click OK twice to exit.

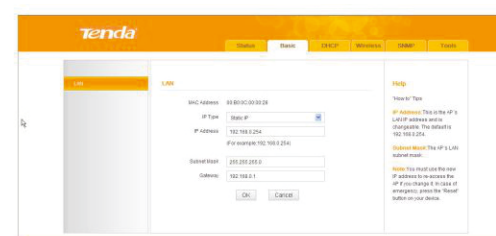


6 Configure AP

A. Launch a web browser, input http://192.168.0.254 and then enter admin (default) in both user name and password fields on the login window.

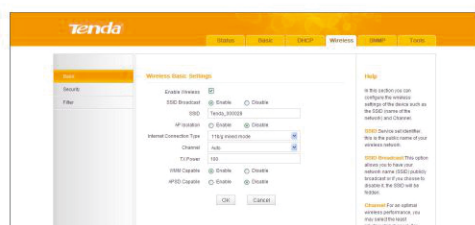


B. Click Basic -> LAN and you can configure the IP address mode (dynamic or static IP), IP address, subnet mask, gateway settings.

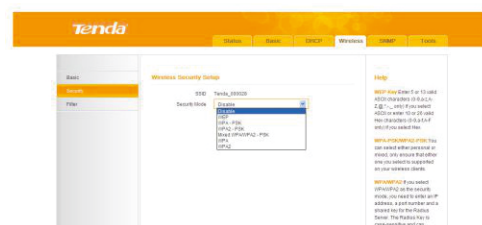


C. Wireless Settings

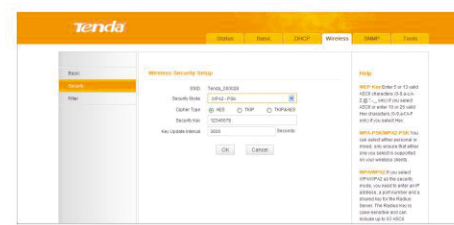
1. Click Wireless -> Basic and you can configure basic wireless settings such as SSID, channel, network mode. Also you can adjust the TX power for reduced interference.



2. Wireless Security Settings: Click Wireless -> Security and you can configure proper security settings (WEP, WPA-PSK, WPA2-PSK or Mixed WPA/WPA-PSK) for the device wireless network.



3. Take WPA2-PSK security mode as an example, the default security key is 12345678 as seen in the figure (Note: If there are more than one device on the network, you can use the unified management utility to centrally manage them).



FAQs:

1. How do I reset the device?

A: Press the RST button on the device for over 7 seconds and the device will restart after reset.

Note: All settings will be restored to factory defaults once you pressed this button.

2. I entered "192.168.0.254" in my web browser but failed to log in to the device's web utility. What should I do?

- a. Right click My Network Places and select Properties;
- b. Right click Local Area Connection, select Status and then click Support to view your PC's IP address. It should be 192.168.0.x (where x represents any number from 1 to 254). If not, you should re-configure it properly.
2. Try a different browser or delete your existing browser's cache and cookies.
3. Try a different PC.

Reset and then reconfigure the device if you tried all above and still could not access device web utility (See question 1 for how to reset device).

Manufacturer: Shenzhen Tenda Technology Co., Ltd
Address: Tenda Industrial Park, No.34-1 Shilong Road, Shiyuan Town, Bao'an District, Shenzhen 518108, China
Phone: (86 755) 2765 7180
Email: sales@tenda.com.cn
support@tenda.com.cn
Website: http://www.tendacn.com