



DIGIEVER

Integrated IP Video Surveillance Solutions

Integrated IP Video Surveillance Solutions



DIGIEVER NVR Total Solutions

Linux-embedded Standalone DIGIEVER NVR / DIGIEVER CMS / DIGIMobile Storage Expansion Box DIGIARRAY / Video Wall Decoder



Compatible Network Camera Brands and Partners



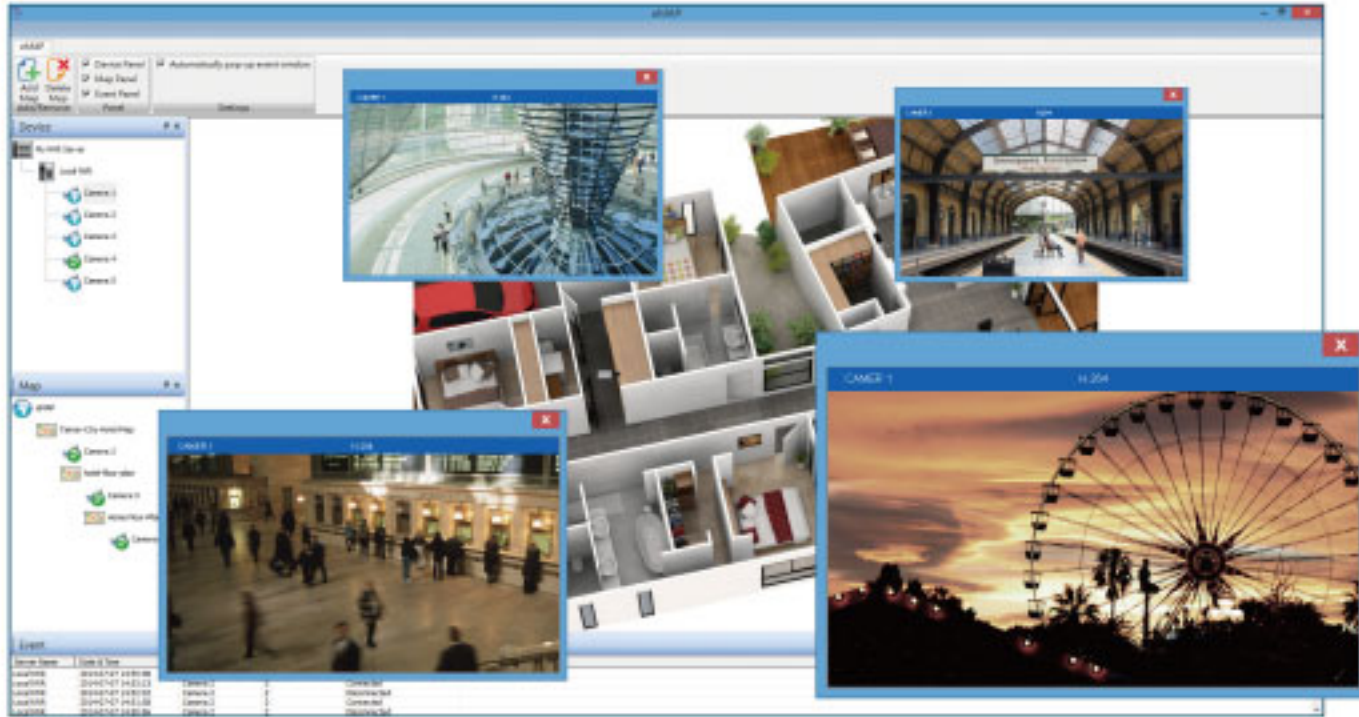
Powerful DIGIEVER NVR Features

Real-time Liveview Local Display

- Up to 64CH real-time local display
- Support 4K UHD(8M) IP cameras
- Support 60FPS IP camera recording and monitoring
- Dual display via HDMI/VGA/DVI-I without extra pc
- Two-way audio via USB type sound adaptor

Real-time Remote Monitoring

- Multi-layerdynamic e-Map:
Pop-out event window, event log history, instant playback
- Support 10 megapixel IP cameras
- Support 60FPS IP camera recording and monitoring
- Various web browsers in windows OS



Excellent Video Recording

- Up to 10 megapixel recording
- Support ONVIF, Generic RTSP & MJPEG to connect IP cameras
- Various recording modes: Event & schedule, always recording, audio recording while event triggered
- Smart threshold & auto recycle storage management
- Flexible video formats: play in NVRPlayer or in genral player

Intuitive Multi-channel Playback

- Maximum 16-channel simultaneous playback
- Smart search to quickly discover event videos
- Export file with portable NVRPlayer

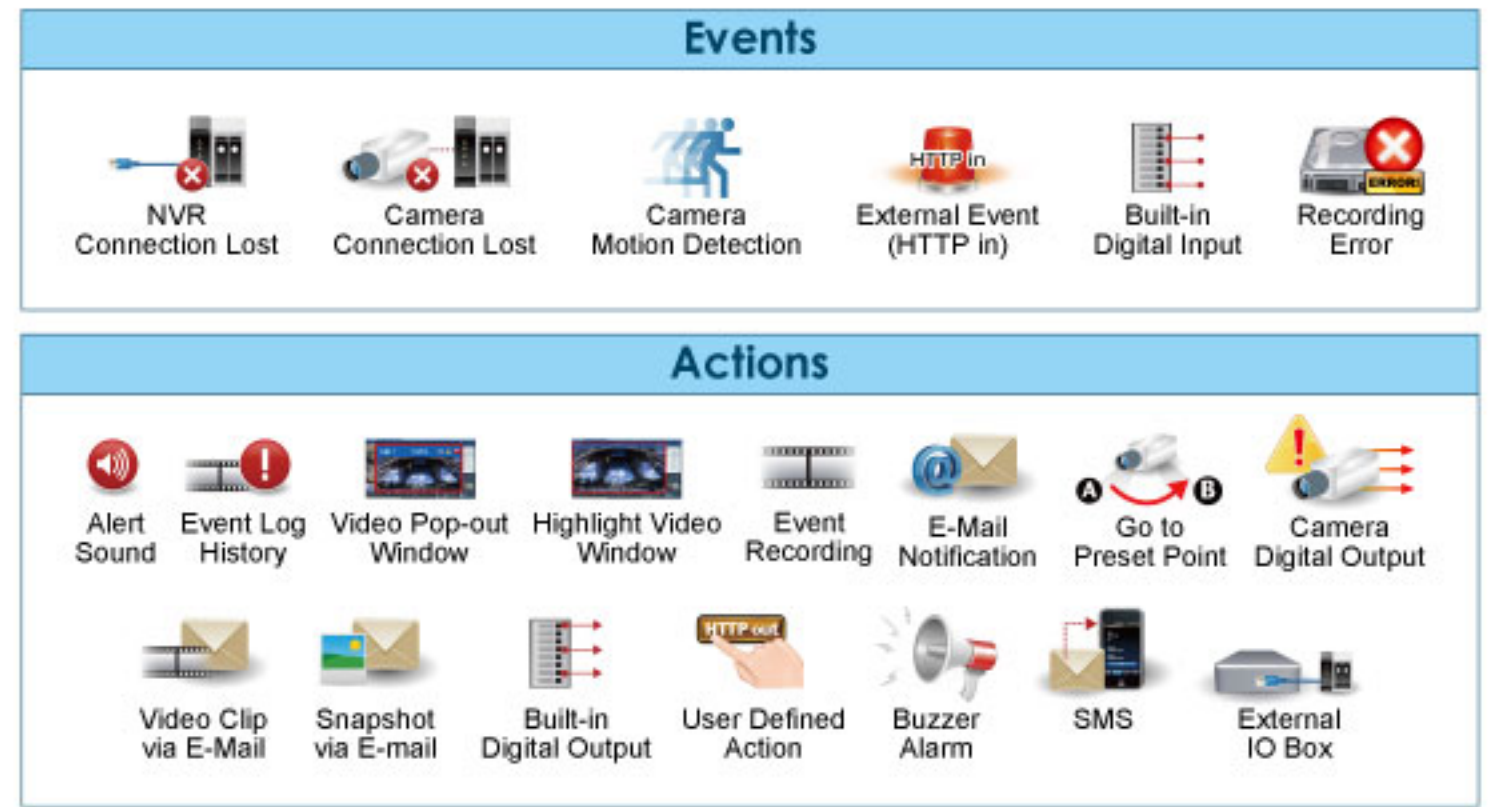


Advanced and Reliable Security System

- Stable and secure Linux-embedded system
- NVR failover and system monitoring
- Detail log information
- User privilege management
- Flexible permission and prohibition of IP range

Powerful Event and Action Management

- Up to 6 event types and 15 action types



Diverse Backup Methods

- Export files with encryption on remote and local playback
- Instant Export: Intuitively export video while playback videos
- One touch USB backup
- Remote backup to NAS
- Cloud backup to Dropbox



Smart and Simple Operation

- Intelligent EZ search of NVR
- Trouble free installation in 5 steps
- Support 24+ language versions
- Easy to use by USB mouse and keyboard
- Multi-window operation
- The same user interface on local and remote operation



Superior Hardware Design

- Intel Dual Core high performance CPU
- High network throughput for high megapixel recording
- Up to 6TB storage capacity per hard disk drive
- Built-in advanced RAID configuration with hot swap design
- Built-in DI/DO of 4-in 2-out
- Automatic recovery from power outage
- Support UPS for power outage
- Storage extension via eSATA port

DIGIEVER Extension Solutions

DIGIMobile V2

Liveview

- View videos from multiple phones at the same time
- Support H.264 and up to 30 FPS in single view
- Display mode: 1/4/6 and sequential mode
- Support PTZ control, pitch to zoom and audio



Playback

- Quick playback methods:
Event playback and continuous playback
- Playback speed control: Fast forward and slow motion
- Frame by frame playback and rewind
- Support pitch to zoom and audio
- Time bar control

Others

- Quickly add NVR in LAN via EZ Search
- Directly control NVR liveview on local display
- Quick event sorting method
- Instant event notification
- Quick monitoring from favorites

Scalable IP Video Management Solution: DIGIEVER CMS

DIGIEVER Central Management System (DIGIEVER CMS) is an active surveillance control center to centrally manage different sites of DIGIEVER NVRs. Composed of two intelligent video software, CMS-Client and CMS-Matrix, DIGIEVER CMS can manage large-scale surveillance efficiently and effectively.

CMS-Matrix Video wall software



CMS-Client CMS control center

Intuitive Liveview Monitoring

- Manage up to 1024 IP cameras
- Monitor up to 64 channels per page
- User-defined display mode
- Stream optimization to save bandwidth
- Camera image rotation for corridor mode
- Camera group management for quick access
- Event notification:
highlight video window, event log history, instant playback



Quick Navigation with Dynamic E-maps

- Multi-layer map tree
- Instant playback on event panel
- Numerous detection of camera digital input, NVR/camera connection lost, camera motion, NVR external event (HTTP in), built-in digital input
- Diverse notifications via video pop-out window, blinking map icon on map and map tree



Multi-channel Playback and Smart Search

- 16-channel simultaneous playback
- Smart search to quickly find and play key video
- Export file with portable NVRPlayer
- Instant export to export videos while playback videos
- Thumbnail preview on time table
- Zero learning curve due to the same UI with DIGIEVER NVR



Applicable Scalable Video Wall Software

- Ideal for control room monitoring
- User-defined display mode
- Assign different layouts to diverse monitors
- Preview video wall on CMS-Client for remote configuration
- Flexible monitor scalability based on the numbers of display card



■ DIGIEVER Extension Solutions ■

DIGIARRAY DA-4000E

A Storage Expansion Box for DIGIEVER NVR

■ Robust Scalability up to 24 TB

■ Multi-volume Storage Management

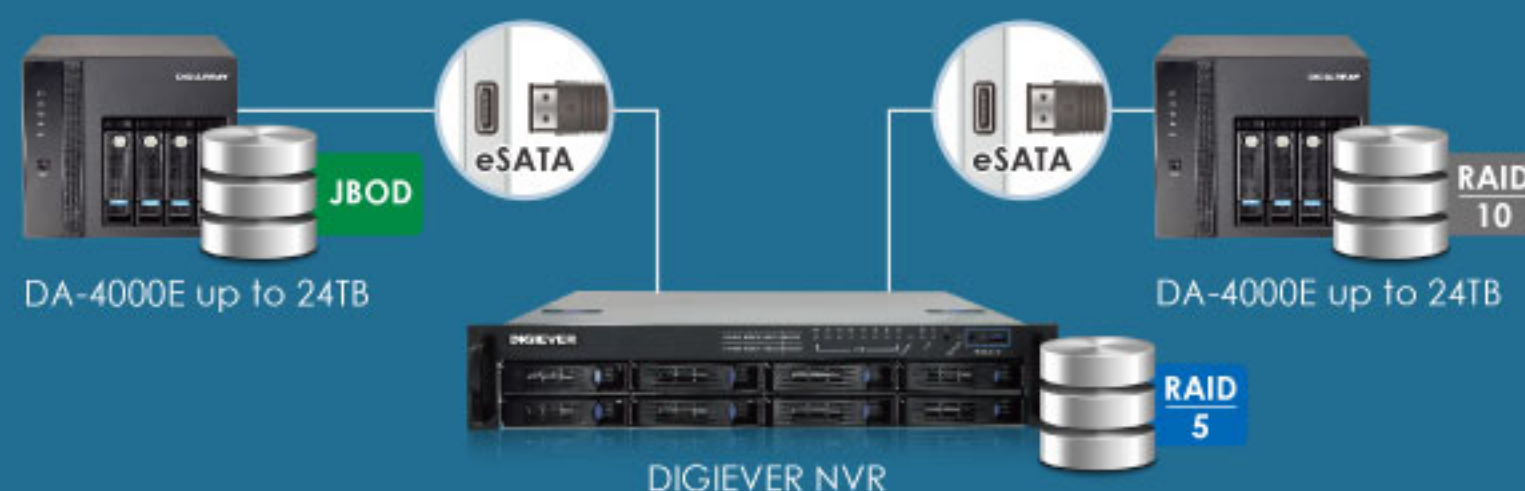
- No impact on NVR performance when extending storage size
- Flexible RAID rebuilding type in NVR and DIGIARRAY

■ Easy Expansion via eSATA Interface

- Fast and efficient video transmission
- Quickly connect to DIGIEVER NVR

■ Easy Deployment with Plug-and-Play Design

- Hot swap design in case of failure
- Storage portable design to move all HDDs to another DIGIARRAY



■ Rock-solid Hardware RAID

- Safe, reliable and high speed
- Various hardware RAID types: JBOD(Linear), RAID 0,1,5,10

All-in-one NVR Surveillance Solutions

Real-time Local Display

- Support 4K UHD hardware decode
- Up to 64 channels
- Dual display



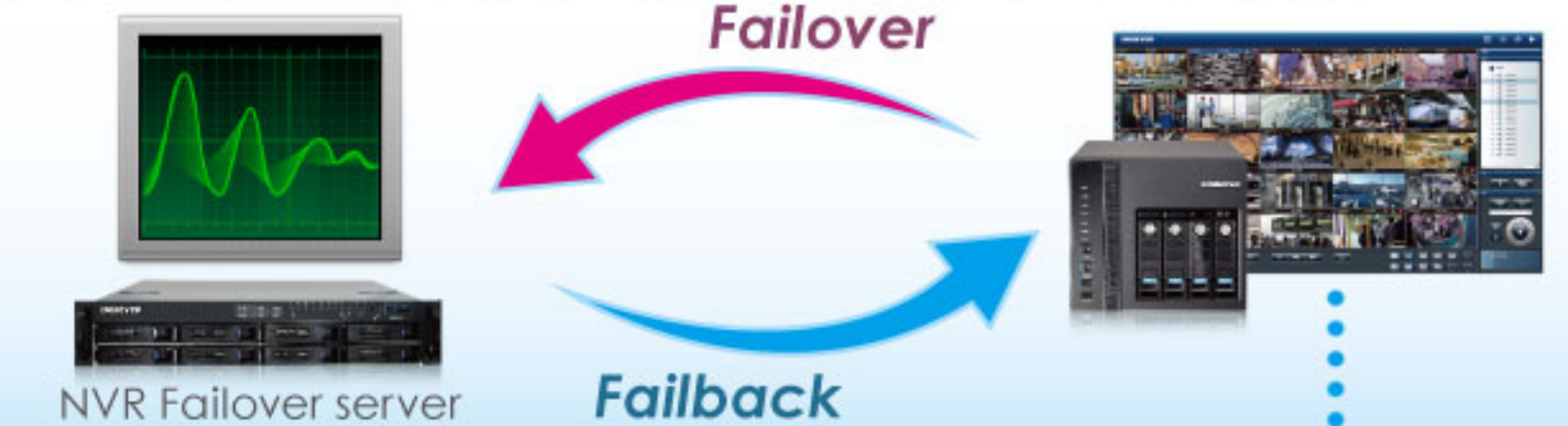
Storage Expansion Box

- Hardware RAID with HDD Hot-swap design
- Support up to 16 HDDs with DIGIEVER NVR



NVR Failover server

- Check NVR and HDD status every minute
- Monitor up to 4 NVR recording servers in default (Option up to 16 NVRs)
- Failover: Take over failed NVR for monitor and recording
- Failback: NVR restores its original video recording and monitoring function



Dual IP Application

- Maximize network efficiency and bandwidth stability
- Flexible network environment management



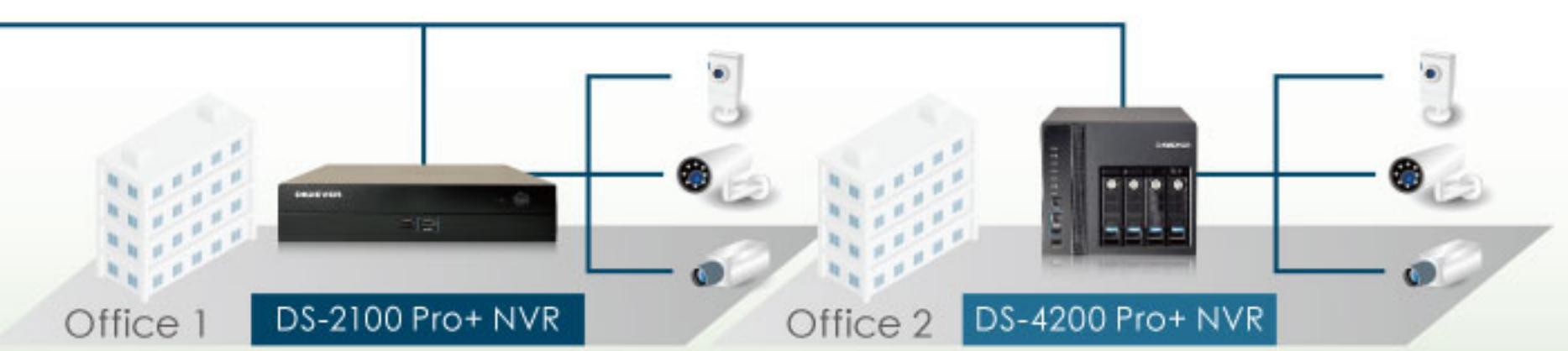
All-in-one Standalone NVR Solutions

- Built-in NVR server
- Built-in DHCP server
- Built-in mini-CMS server
- Built-in NTP server
- Built-in failover server



Mini-CMS Server Monitoring

- Up to 144 channels
- Simultaneously monitor other remote NVR sites



Remote Browser Monitoring



Video Wall Decoder

- Up to 64CH real-time local display
- Hardware Decode support 4K UHD(8MP) IP camera
- Dual display



Remote Backup

- Backup important surveillance videos to NAS
- Detail backup history list for security control



CMS / Video Wall

- Up to 1024 channels via CMS-Client
- Up to 64 channels per monitor via CMS-Matrix



DIGIEVER Extension Solutions

Video Wall Decoder VD Series

The World's First 4K Ultra HD Hardware Decoder Linux-embedded Video Decoder

Smart and Reliable System

- Trouble-free installation in 4 steps
- Quickly add DIGIEVER NVR and IP camera via UPnP search
- PC-less operation with USB type keyboard and mouse
- Reliable Linux-embedded system
- Smart control via remote controller (optional)

Superb Liveview Video Quality

- Up to 64 real-time channels on local display
- Hardware decode support 4K UHD (8MP) IP camera per channel
- Dual display via HDMI/DVI-I output
- Support 60FPS and ImmerVision panomorph
- Dual-stream optimization for better video quality

Compatibility

- Support over 90 IP camera brands and more than 3500 IP cameras
- Support ONVIF/ Generic RTSP & MJPEG



Cost-efficiency Secondary Control Room Solution



Build Video Wall via Multiple Decoders



Local display Solution with Diverse DIGIEVER NVRs



Easy to Add Cameras Directly



Technical Specifications

DIGIEVER CMS Technical Specifications

DIGIEVER CMS



CMS-Matrix

CMS-Client

Liveview

Max. Channels	Manage up to 1024 channels with multiple DIGIEVER NVRs, and display up to 64-channel liveview* on single liveview page for any important channel
Customized Display Mode	1x1, 2x2, 3x3, 4x4, 5x5, 6x6, 7x7, 8x8, full screen, user-defined
Advanced Image Rotation	Allow users to easily rotate liveview channel to 90°, 180°, or 270° degree
Smart Stream Optimization	Automatically adjust streaming quality, according to the different liveview display modes, to perform the best liveview quality.
Highlight Video Window	Immediately highlight video channel with red frame to indicate event situation
Event Log History	A detail list of event history to check event information
Instant Playback	Double click or right click on event log to play event recording file for quick investigation
Device Name Search	Quickly find managed NVR and camera by entering keyword

E-Map

Multi-layer Maps	Build up multi-layered interactive maps to quickly locate trouble zones in a comprehensive overview.
Intuitive E-map Indicator	Change camera icon with desired type and direction
Multiple Image Formats Support	Upload maps in BMP, GIF, JPEG and PNG formats with no limitation of image size
Video Pop-out Window	Instant notification by a pop-out video window, including Camera Motion, Camera Digital Input, and NVR Digital Input event
Event Log History	A detail list of event history to check event information
Instant Playback	Double click or right click on event log to play back event recording file for quick investigation

Playback

Multi-channel Playback	16 channel high megapixel simultaneous playback for detail scene investigation
Smart Search	Five quick search modes: Motion Detection, Foreign Object Detection, Missing Object Detection, Loss Focus, and Camera Tampering Detection. Double click on smart search result to start playing the video
De-warping Methods	Support Immersion panomorph and various de-warping methods
Video Export and Snapshot	Export video files and take snapshots to save any videos found in investigation

Video Wall Configuration (with CMS-Matrix**)

Multi-Monitor Settings	Display monitor identification number on each monitor allowing users to assign suitable layout for diverse surveillance purposes
Flexible User-defined Layout	Create various styles of layout through user-defined layout tool
Sequential Setting	Enable sequential mode to display several layouts
Video Wall Setting Preview	Remotely preview video wall on CMS-Clients to speed up the video wall configuration
Dual-Stream Support	Manually choose stream 1 or stream 2 for each channel to save bandwidth.

*For more than 64 CH liveview at the same time, it is suggested to use CMS-Matrix as liveview video wall.

**CMS-Matrix is optional

DIGIARRAY Specifications

DIGIARRAY DA Series

DA-4000E



HDD Tray	4 (Swappable)
Hot Swap	Yes
Storage Capacity per HDD	Up to 6TB
Maximum Capacity	Up to 24TB (2.5"/3.5" SATA HDD x 4)
Disk Management	Linear(JBOD), RAID0, RAID1, RAID5, RAID10
RAID Algorithm	Hardware RAID
LED Indicator	eSATA, HDD1, HDD2, HDD3, HDD4
Port	eSATA
H/W Dimensions	184.94(H) x 205.3(W) x 245.8(D) mm 7.28(H) x 8.08(W) x 9.68(D) inch

Decoder Specifications

Video Wall Decoder VD Series

VD-0000 Series



Model Name	VD-0064/0049/0036/0025
Supported Channel Model	Up to 64/49/36/25
Display Modes	1,4,9,12,16,20,25,30,36,42,49,56,64,5+1, full screen and sequential
Video output connector	HDMI/ DVI-I
H/W Decode Max Resolution per Channel	Resolution up to 8MP (4K Ultra HD) per channel
H/W Decode Local Display Max. FPS in Single Page¹	Resolution up to 8MP(4K UHD)/ 4MP:200FPS/ Full HD:480FPS/ HD:720FPS/ D1:1000FPS
Video Compression Format	H.264 · MPEG4 · MJPEG
CPU	Intel Dual Core High Performance CPU
Directly Connect to Camera	Yes. Support Integrated Cameras, ONVIF and Generic RTSP/MJPEG
USB Connector	USB Connector : USB3.0 x 2, USB2.0x4 (For keyboard & mouse and USB dongle)
Audio	Yes
LAN Port	Gigabit x1
Remote Controller	Yes (Optional)
H/W Dimensions	237(H) x 58.5(W) x 192(D) mm 9.33(H) x 2.3 (W) x 7.56(D) inch

All designs and specifications are subject to change without prior notice

Technical Specifications

DIGIEVER NVR Comparison

DIGIEVER NVR	DS-8200-RM Pro series	DS-4200-RM Pro series	DS-4200 Pro series	
Model Name	DS-8236/8232/8225/8220/8216/ 8212/8209-RM Pro	DS-4236/4232/4225/4220/4216/4212/ 4209-RM Pro	DS-4236/4232/4225/4220/4216/4212/ 4209/4205 Pro	
CPU	Intel Dual Core CPU	Intel Dual Core CPU	Intel Dual Core CPU	
Supported Channel Model	Up to 36/32/25/20/16/12/9	Up to 36/32/25/20/16/12/9	Up to 36/32/25/20/16/12/9/5	
Operation System	Linux-embedded			
Maximum Network Throughput	360Mbps			
Support Local Display	Yes (HDMI/ VGA)			
Max Resolution Support on Local Display	Up to 2 Megapixel /channel	Up to 2 Megapixel /channel	Up to 2 Megapixel /channel	
Max. Channel Supported on Local Display	Up to 36 channels / page			
H/W Decode Local Display Max. FPS in Single Page¹	Full HD: 200FPS/ HD: 300FPS/ D1: 750FPS/ CIF: 900FPS	Full HD: 200FPS/ HD: 300FPS/ D1: 750FPS/ CIF: 900FPS	Full HD: 200FPS/ HD: 300FPS/ D1: 750FPS/ CIF: 900FPS	
Video Format	H.264, MPEG-4, MJPEG (Depending on the camera models)			
Built-in mini-CMS Server Monitoring²	Yes (Up to 144 channels)			
Storage Capacity per HDD	Up to 6TB			
Storage Expansion Units (DIGIARRAY)	2 Units			
HDD Tray	16 (NVR:8 + DIGIARRAY Storage Expansion : 8)	12 (NVR:4 + DIGIARRAY Storage Expansion : 8)	12 (NVR:4 + DIGIARRAY Storage Expansion : 8)	
Maximum Capacity³	Up to 96 TB (NVR:48TB + DIGIARRAY Storage Expansion : 48TB)	Up to 72 TB (NVR:24TB + DIGIARRAY Storage Expansion : 48TB)	Up to 72 TB (NVR:24TB + DIGIARRAY Storage Expansion : 48TB)	
Disk Configuration	Linear(JBOD), RAID 0/1/5/10			
Built-in DI/DO(Digital Input/Digital Output)	4-in, 2-out			
Network Port⁴	Gigabit x 2			
USB Backup	Yes			
USB Connector	Front:USB3.0x1 (For USB Backup) / Rear: USB2.0x4		Front:USB2.0x2(One for USB Backup) / Rear: USB2.0x4	
H/W Dimensions	88.1(H) x 481(W) x 661.65(D) mm 3.46(H) x 18.9(W) x 26(D) inch	44.1(H) x 481(W) x 661.65(D) mm 1.73(H) x 18.9(W) x 26(D) inch	184.94(H) x 205.3(W) x 245.8(D) mm 7.28(H) x 8.08(W) x 9.68(D) inch	

DIGIEVER NVR	DS-2100 Pro series	DS-1100 Pro series	DS-4000 series	DS-2000 series
Model Name	DS-2136/2132/2125/2120/2116/ 2112/2109/2105 Pro	DS-1136/1132/1125/1120/1116/ 1112/1109/1105 Pro	DS-4032/4025/4020/4016/4012/ 4009/4005	DS-2032/2025/2020/2016/2012/ 2009/2005
CPU	Intel Dual Core CPU	Intel Dual Core CPU	RISC	RISC
Supported Channel Model	Up to 36/32/25/20/16/12/9/5	Up to 36/32/25/20/16/12/9/5	Up to 32/25/20/16/12/9/5	Up to 32/25/20/16/12/9/5
Operation System	Linux-embedded			
Maximum Network Throughput	360Mbps			150Mbps
Support Local Display	Yes (HDMI/ DVH-I)			-
Max Resolution Support on Local Display	Up to 2 Megapixel /channel			-
Max. Channel Supported on Local Display	Up to 36 Channels / page			-
H/W Decode Local Display Max. FPS in Single Page¹	Full HD: 200FPS/ HD: 300FPS/ D1: 750FPS/ CIF: 900FPS			-
Video Format	H.264, MPEG-4, MJPEG (Depending on the camera models)			
Built-in mini-CMS Server Monitoring²	Yes (Up to 144 channels)			
Storage Capacity per HDD	Up to 6TB		Up to 3TB	Up to 5TB
Storage Expansion Units (DIGIARRAY)	1 Units		2 Units	
HDD Tray	6 (NVR:2 + DIGIARRAY Storage Expansion: 4)	5 (NVR:1 + DIGIARRAY Storage Expansion: 4)	12 (NVR:4 + DIGIARRAY Storage Expansion: 8)	10 (NVR:2 + DIGIARRAY Storage Expansion: 8)
Maximum Capacity³	Up to Up to 36 TB (NVR:12TB + DIGIARRAY Storage Expansion: 24TB)	Up toUp to 30 TB (NVR:6TB + DIGIARRAY Storage Expansion: 24TB)	Up to 60 TB (NVR:12TB + DIGIARRAY Storage Expansion: 48TB)	Up to 58 TB (NVR:10TB + DIGIARRAY Storage Expansion: 48TB)
Disk Configuration	Linear(JBOD), RAID 0/1		Linear(JBOD), RAID 0/1/5	Linear(JBOD), RAID 0/1
Built-in DI/DO(Digital Input/Digital Output)	-		4-in, 2-out	
Network Port⁴	Gigabit x 1			
USB Backup	Yes			
USB Connector	Front:USB2.0x2(One for USB Backup) / Rear:USB3.0x2 and USB2.0x2		Front: USB 2.0 x 1 (For USB BACKUP) / Rear: USB2.0 x 2	
H/W Dimensions	63.2(H) x 295(W) x 271(D) mm 2.49(H) x 11.61(W) x 10.67(D) inch	58.5(H) x 237(W) x 192(D) mm 2.3(H) x 9.33(W) x 7.56(D) inch	184.94(H) x 205.3(W) x 245.8(D) mm 7.28(H) x 8.08(W) x 9.68(D) inch	164.94(H) x 114.97(W) x 246.1(D) mm 6.49(H) x 4.53(W) x 9.69(D) inch

All designs and specifications are subject to change without prior notice

Technical Specifications

DIGIEVER NVR Pro+ Comparison

DIGIEVER NVR	DS-8300-RM Pro+ series	DS-8200-RM Pro+ series	DS-4200-RM Pro+ series
Model Name	DS-8364/8356/8349/8342-RM Pro+	DS-8264/8256/8249/8242/8236/8232/8225/8220/8216/8212/8209-RM Pro+	DS-4264/4256/4249/4242/4236/4232/4225/4220/4216/4212/4209-RM Pro+
CPU	Intel Dual Core High Speed CPU	Intel Dual Core High Performance CPU	Intel Dual Core High Performance CPU
Supported Channel Model	Up to 64/56/49/42	Up to 64/56/49/42/36/32/25/20/16/12/9	Up to 64/56/49/42/36/32/25/20/16/12/9
Operation System	Linux-embedded		
Maximum Network Throughput	450Mbps	400Mbps	
Support Local Display	Yes (HDMI/ VGA)		
Max Resolution Support on Local Display	Up to 8 Megapixel(4K UHD) /channel	Up to 8 Megapixel(4K UHD) /channel	Up to 8 Megapixel(4K UHD) /channel
Max. Channel Supported on Local Display	Up to 64 channels / page		
H/W Decode Local Display Max. FPS in Single Page¹	Resolution up to 8MP(4K UHD)/ 4MP:360FPS/ Full HD:900FPS/ HD:1200FPS/ D1:1600FPS	Resolution up to 8MP(4K UHD)/ 4MP:200FPS/ Full HD:480FPS/ HD:720FPS/ D1:1000FPS	Resolution up to 8MP(4K UHD)/ 4MP:200FPS/ Full HD:480FPS/ HD:720FPS/ D1:1000FPS
Video Format	H.264, MPEG-4, MJPEG (Depending on the camera models)		
Built-in mini-CMS Server Monitoring²	Yes (Up to 144 channels)		
Storage Capacity per HDD	Up to 6TB		
Storage Expansion Units (DIGIARRAY)	2 Units		
HDD Tray	16 (NVR:8 + DIGIARRAY Storage Expansion: 8)	16 (NVR:8 + DIGIARRAY Storage Expansion: 8)	12 (NVR:4 + DIGIARRAY Storage Expansion: 8)
Maximum Capacity³	Up to 96 TB (NVR:48TB + DIGIARRAY Storage Expansion: 48TB)	Up to 96 TB (NVR:48TB + DIGIARRAY Storage Expansion: 48TB)	Up to 72 TB (NVR:24TB + DIGIARRAY Storage Expansion: 48TB)
Disk Configuration	Linear(JBOD), RAID 0/1/5/10		
Built-in DI/DO(Digital Input/Digital Output)	4-in, 2-out		
Network Port⁴	Gigabit x 2		
USB Backup	Yes		
USB Connector	Front:USB3.0x1 (For USB Backup) / Rear: USB2.0x4		
H/W Dimensions	88.1(H) x 481(W) x 661.65(D) mm 3.46(H) x 18.9(W) x 26(D) inch	88.1(H) x 481(W) x 661.65(D) mm 3.46(H) x 18.9(W) x 26(D) inch	44.1(H) x 481(W) x 661.65(D) mm 1.73(H) x 18.9(W) x 26(D) inch

DIGIEVER NVR	DS-4200 Pro+ series	DS-2100 Pro+ series	DS-1100 Pro+ series
Model Name	DS-4264/4256/4249/4242/4236/4232/4225/4220/4216/4212/4209/4205 Pro+	DS-2164/2156/2149/2142/2136/2132/2125/2120/2116/2112/2109/2105 Pro+	DS-1164/1156/1149/1142/1136/1132/1125/1120/1116/1112/1109/1105 Pro+
CPU	Intel Dual Core High Performance CPU	Intel Dual Core High Performance CPU	Intel Dual Core High Performance CPU
Supported Channel Model	Up to 64/56/49/42/36/32/25/20/16/12/9/5	Up to 64/56/49/42/36/32/25/20/16/12/9/5	Up to 64/56/49/42/36/32/25/20/16/12/9/5
Operation System	Linux-embedded		
Maximum Network Throughput	400Mbps		
Support Local Display	Yes (HDMI/ VGA)	Yes (HDMI/ DVI-I)	
Max Resolution Support on Local Display	Up to 8 Megapixel(4K UHD) /channel	Up to 8 Megapixel(4K UHD) /channel	Up to 8 Megapixel(4K UHD) /channel
Max. Channel Supported on Local Display	Up to 64 channels / page		
H/W Decode Local Display Max. FPS in Single Page¹	Resolution up to 8MP(4K UHD)/ 4MP:200FPS/ Full HD:480FPS/ HD:720FPS/ D1:1000FPS	Resolution up to 8MP(4K UHD)/ 4MP:200FPS/ Full HD:480FPS/ HD:720FPS/ D1:1000FPS	Resolution up to 8MP(4K UHD)/ 4MP:200FPS/ Full HD:480FPS/ HD:720FPS/ D1:1000FPS
Video Format	H.264, MPEG-4, MJPEG (Depending on the camera models)		
Built-in mini-CMS Server Monitoring²	Yes (Up to 144 channels)		
Storage Capacity per HDD	Up to 6TB		
Storage Expansion Units (DIGIARRAY)	2 Units	1 Units	
HDD Tray	12 (NVR:4 + DIGIARRAY Storage Expansion: 8)	6 (NVR:2 + DIGIARRAY Storage Expansion: 4)	5 (NVR:1 + DIGIARRAY Storage Expansion: 4)
Maximum Capacity³	Up to 72 TB (NVR:24TB + DIGIARRAY Storage Expansion: 48TB)	Up to 36 TB (NVR:12TB + DIGIARRAY Storage Expansion: 24TB)	Up to 30 TB (NVR:6TB + DIGIARRAY Storage Expansion: 24TB)
Disk Configuration	Linear(JBOD), RAID 0/1/5/10	Linear(JBOD), RAID 0/1	Single
Built-in DI/DO(Digital Input/Digital Output)	4-in, 2-out	-	
Network Port⁴	Gigabit x 2	Gigabit x 1	
USB Backup	Yes		
USB Connector	Front:USB2.0x2(One for USB Backup)/Rear: USB2.0x4	Front:USB2.0x2 (One for USB Backup) / Rear: 3.0x2 and USB2.0x2	
H/W Dimensions	184.94(H) x 205.3(W) x 245.8(D) mm 7.28(H) x 8.08(W) x 9.68(D) inch	63.2(H) x 295(W) x 271(D) mm 2.49(H) x 11.61(W) x 10.67(D) inch	58.5(H) x 237(W) x 192(D) mm 2.3(H) x 9.33(W) x 7.56(D) inch

Note 1. H/W decode local display max. FPS in single page is based on camera's compression format H.264.
 Note 2. Built-in mini-CMS server monitoring is not supported on local display interface.
 Note 3. The standard system is shipped without HDD.
 Note 4. User is advised to connect cameras and DIGIEVER NVR with gigabit switch.

All designs and specifications are subject to change without prior notice

Authorized Dealer:

Learn more by visiting our product web page:



www.digiever.com