

Temperature & Humidity SMS Alert Controller

Version 6

Setup Software Guide



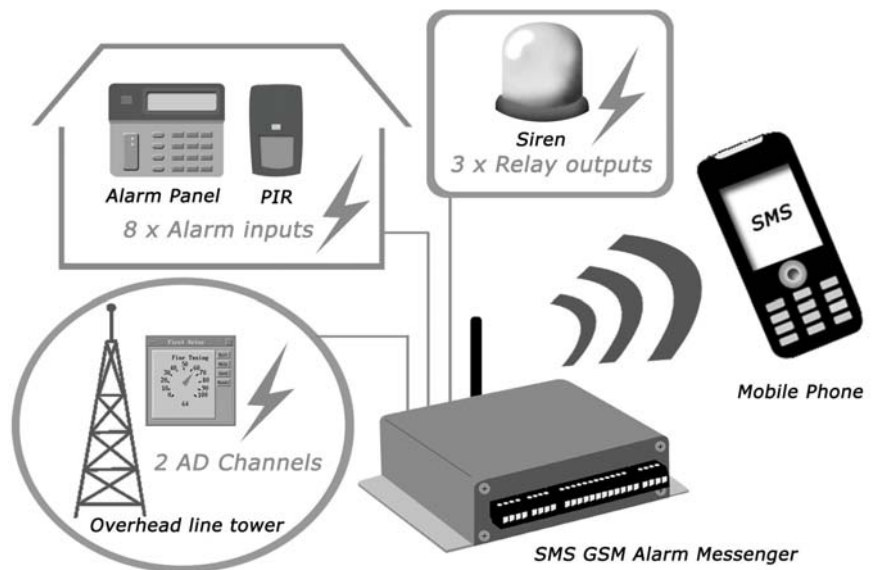
GSMS-THR / GSMS-THP

Revision 100507[Version 1.2.8]

SMS Alarm Messenger

Version 6

Setup Software Guide




SMS Pro series

Revision 100507 [Version 1.2.8]

Contents

1. How to setup SMS Alert Controller?	4
2. Install the “SMSPro_Setup” software	6
3. Connection Type	7
4. Connection Port & Cable	8
5. Quick Start Up	9
6. Phone Book	10
7. Reading Internal Parameters	11
8. Checking Live Data	15
9. Device Setup.....	16
10. Alarm Setup.....	17
11. Temperature & Humidity Calibration [GSMS-THR-SX / THP-SX, SMS Pro-S /SX]	19
12. SMS Text.....	21
13. Device Reset	24
14. Save Configuration in Batch	25
15. Batch Setup	27
16. Remote Setup via GSM Modem.....	29
17. GSM Modem Check.....	31
18. Technical Support.....	32
19. Manufacturer’s Disclaimer Statement	33
20. END USER LICENSE AGREEMENT.....	34

 In this manual, all commands are valid to GSMS-THR, GSMS-THP and SMS Pro series.

Model name “SMS Alert Controller” and its model number are used in the manual, but all features are applied to SMS Alarm Messenger too.

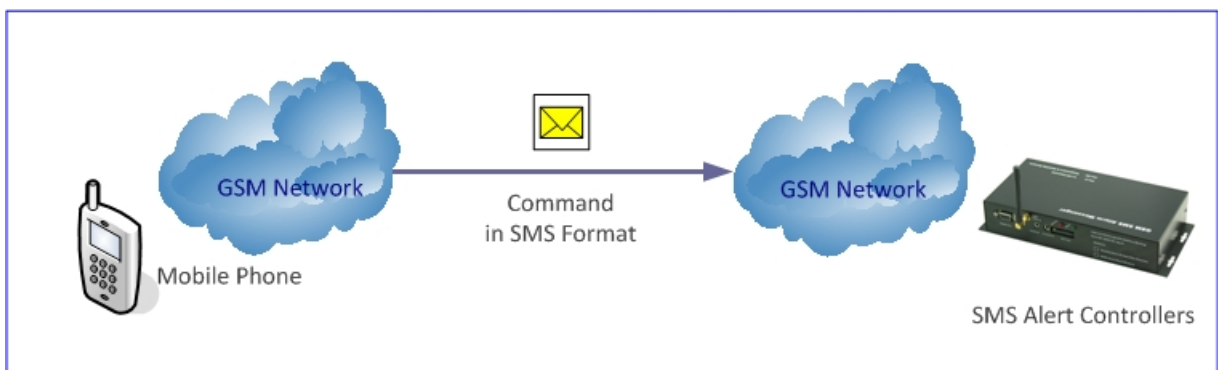
1. How to setup SMS Alert Controller?

There are three different ways of setting up the SMS Alert Controller.

This manual is mainly describing the use of SMS Pro Setup software via RS232 cable and GSM Modem.

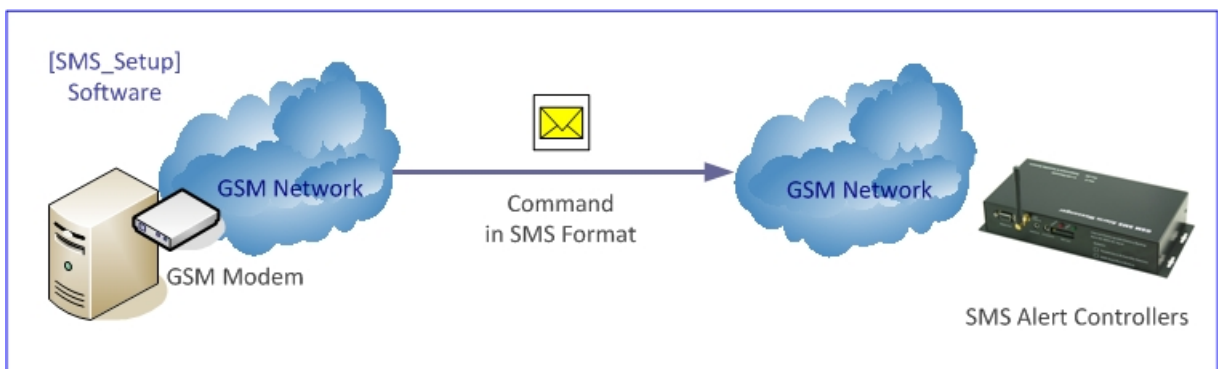
a. Via SMS by Mobile Phone:

- Please refer the command list to the operation manual of SMS Alert Controller.
- Each command will be responded with reply SMS message from SMS Alert Controller to confirm the success of setup.



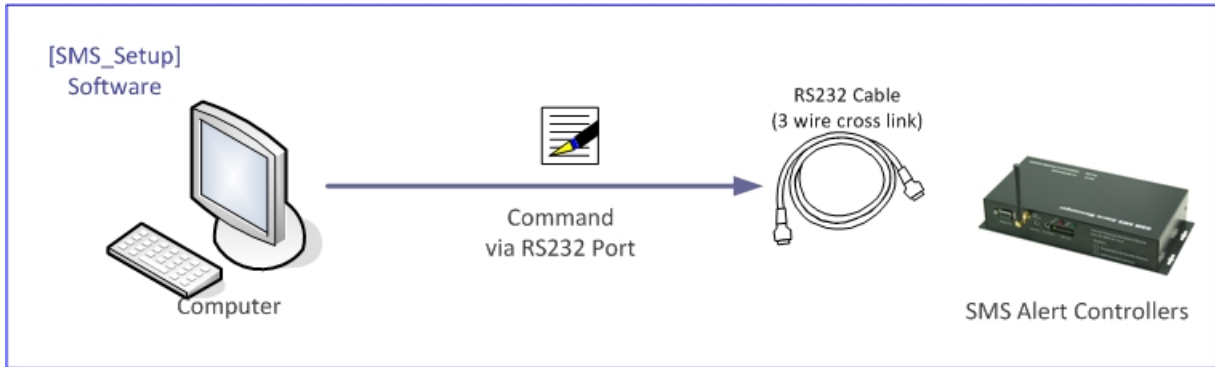
b. Via GSM Modem by PC:

- "SMS Pro Setup" software is provided for this setup operation.
- A GSM Modem is needed. GS300 is recommended.
- It can be selected on the main screen of "SMS Pro Setup" software as below.

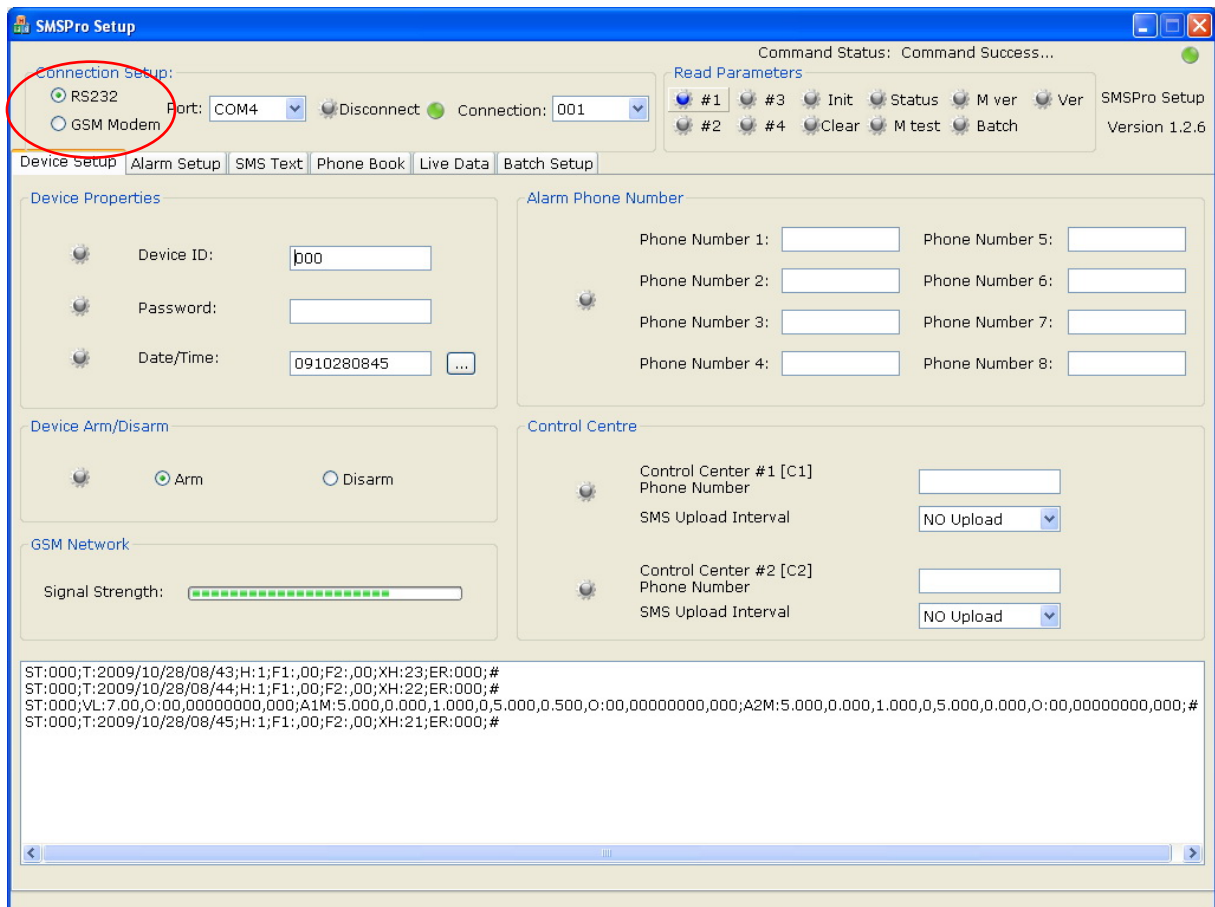


c. Via RS232 Cable by PC:

- “SMS Pro Setup” software is provided for this setup operation.
- 3-wired type RS232 serial cable must be connected first.
- It can be selected on the main screen of “SMS Pro Setup” software as below.

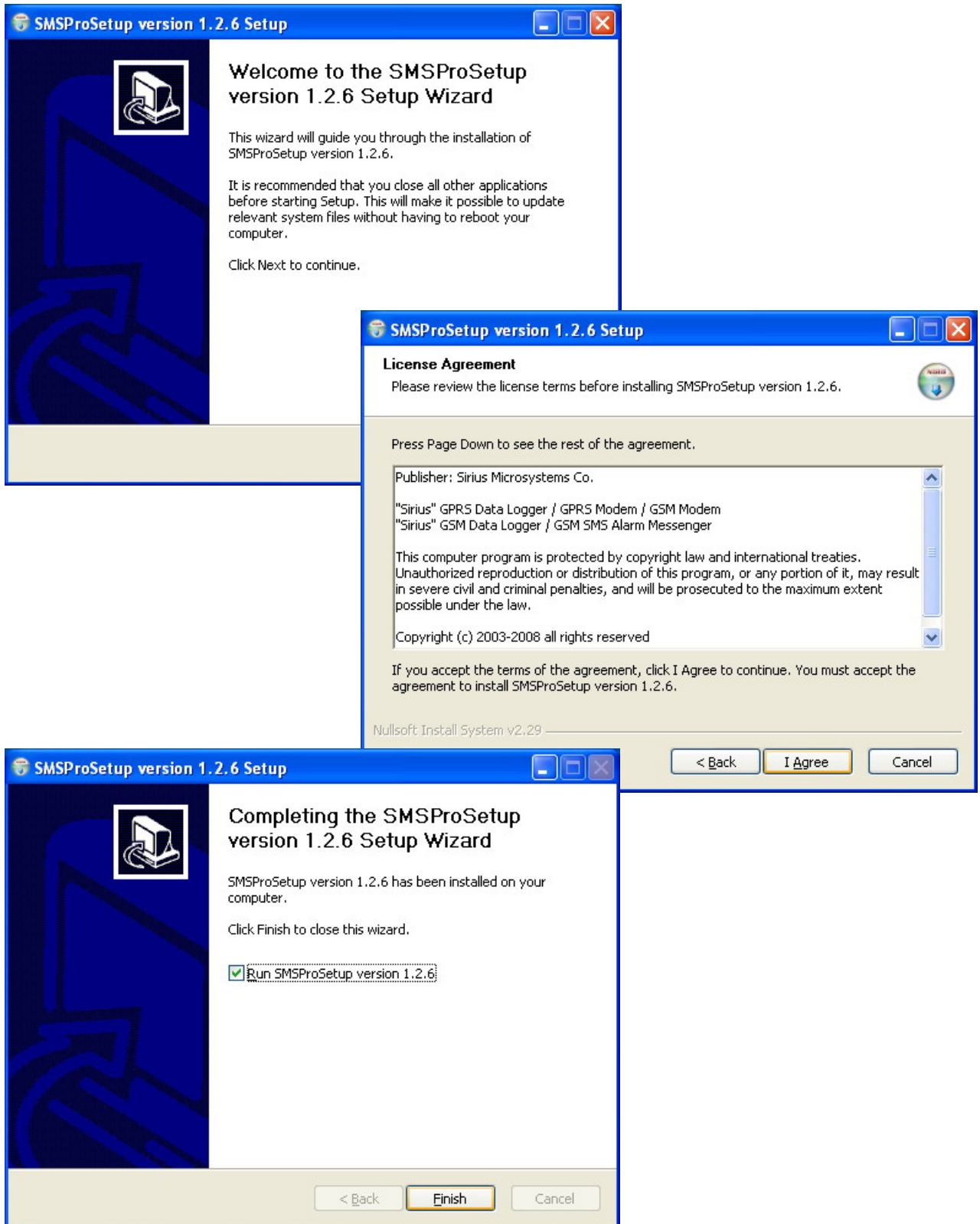


[SMS Pro_Setup Software] screen shot



2. Install the “SMSPro_Setup” software

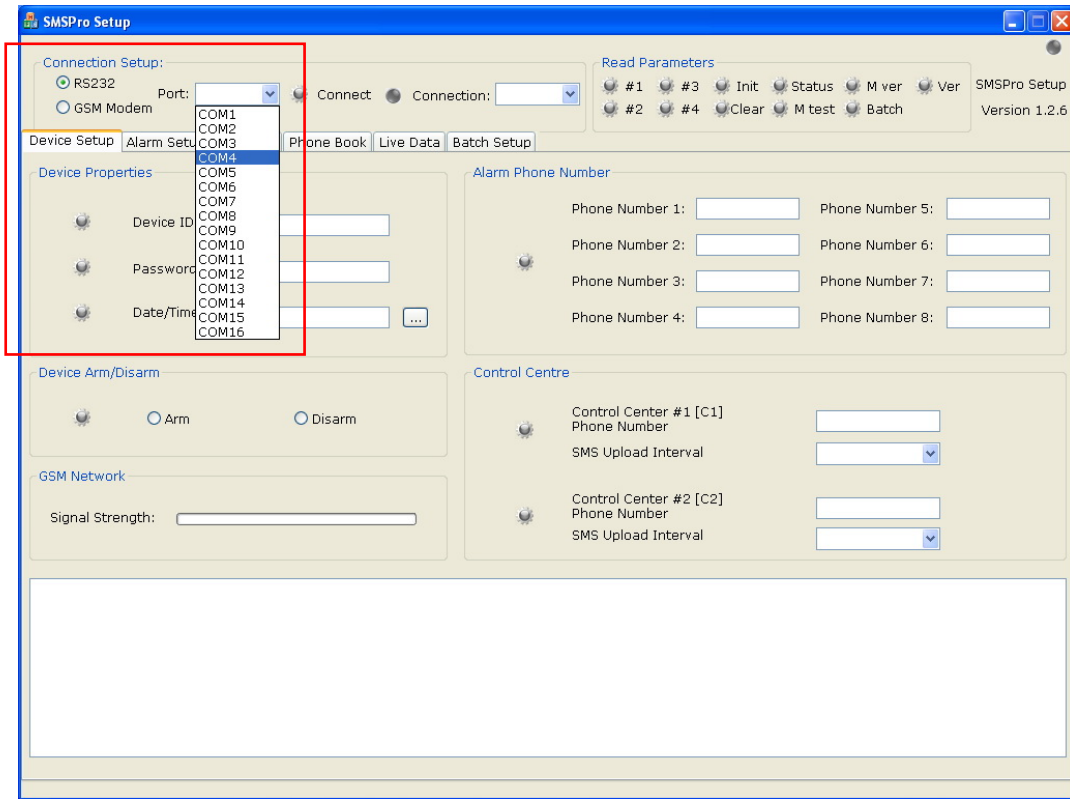
Run “SMSPro_Setup”, and follow the instructions



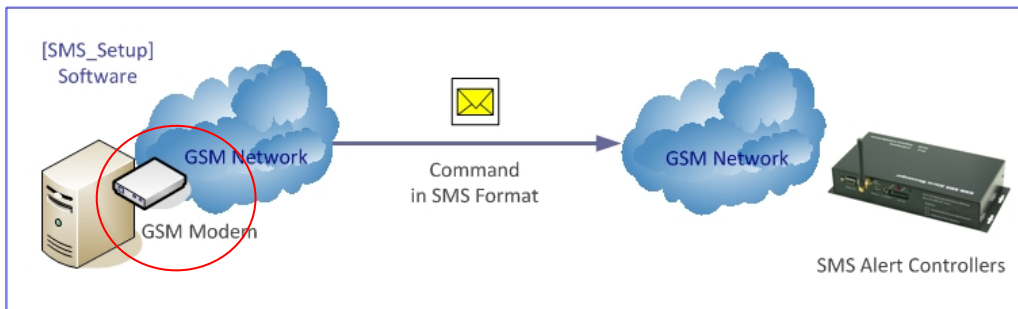
3. Connection Type

Connection

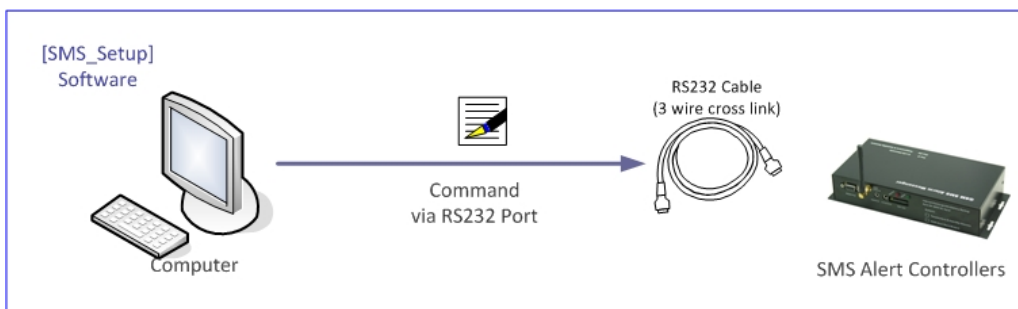
- Select the Connection Type, COM Port, and Click [Connect] button
- Green LED indicates the successful connection



- For GSM Modem, please check which COM port is connected to the modem physically.



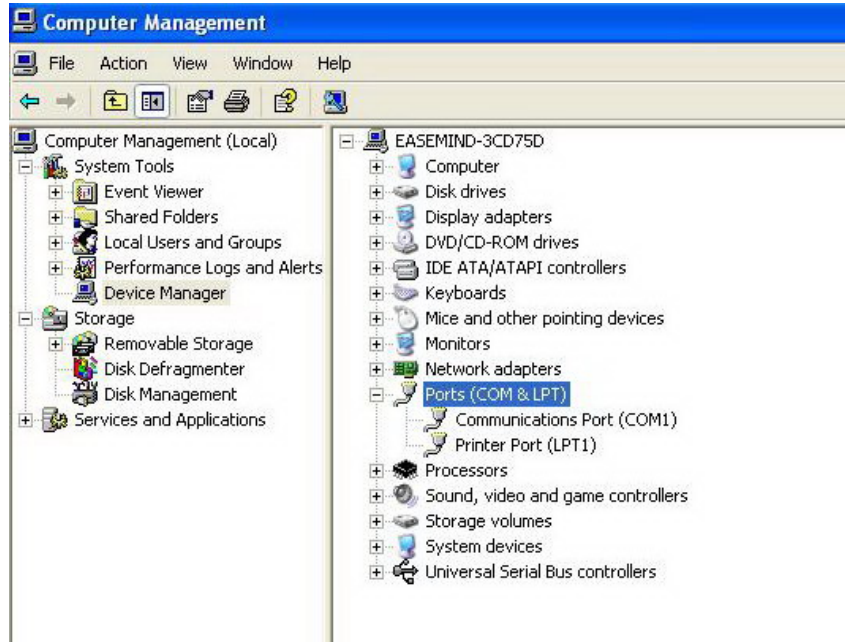
- For RS232, please check which COM port is connected to the SMS Alert Controller physically.



4. Connection Port & Cable

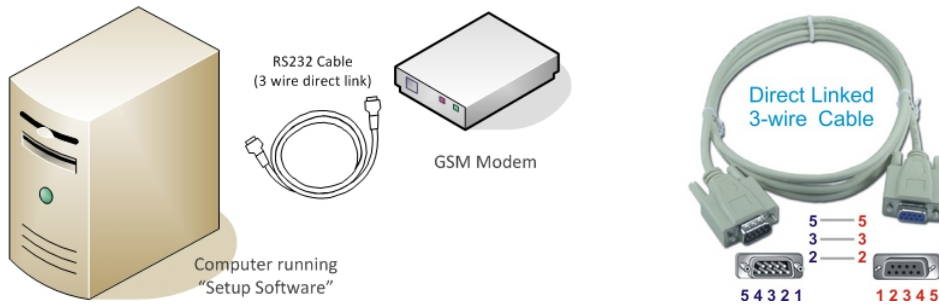
Connection Port

- please check which COM port is connected to the GSM Modem or SMS Alert Controller physically



Connection Cable

- GSM Modem Connection: “direct link RS232 cable” should be used

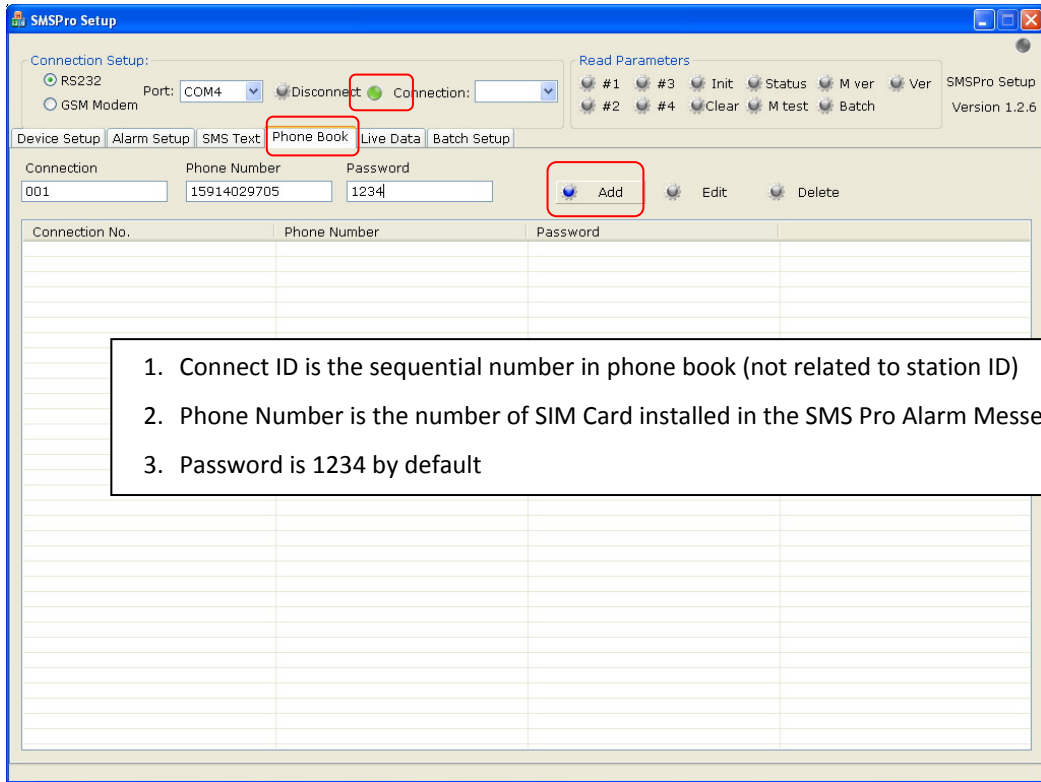


- Direct RS232 Connection: “cross link RS232 cable” should be used

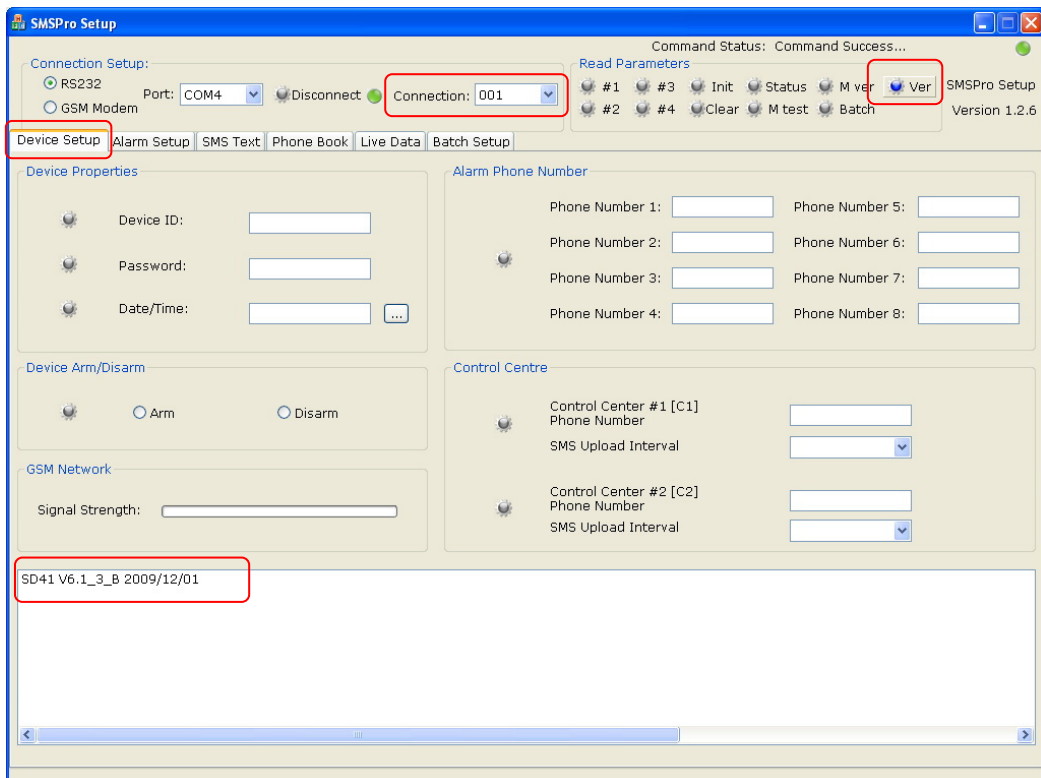


5. Quick Start Up

- Connect the RS232 Cable or GSM Modem, select [Connection Type] and [COM Port]
- Click [Connect] button, green LED indicates the successful connection
- Add a new device in [Phone Book] tab



- In [Device Setup] tab, select the [Connect ID], and Click [Ver] button.
- If its version is shown on the bottom, the device works properly



6. Phone Book

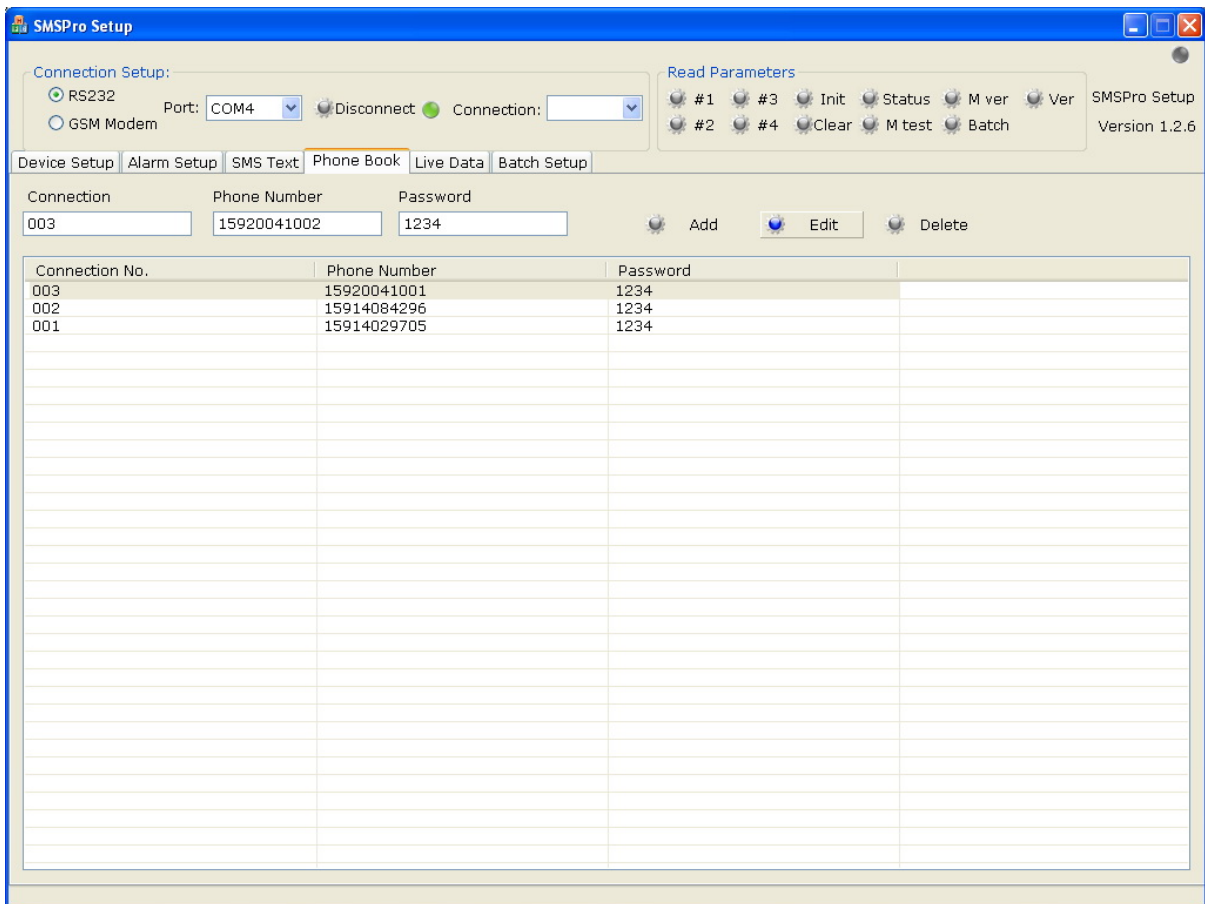
- Go to the [Phone Book] tab, **a new SMS Alert Controller must be added in phone book before setup**
- Add the properties of a new SMS Alert Controller to the phone book in Setup Mode
- Factory Default of SMS Alert Controller properties

Connection No.: 0001

(Sequential number in phone book, but not related to SMS Pro ID number)

Phone Number: phone number of SIM Card installed in the device

Password: 1234 (by default)



- “Password” of SMS Alert Controller in phonebook must match its internal passwords.
- Once the properties are modified in [Device Setup] page, the database of Phone Book should be updated manually.
- Whenever SMS Alert Controller internal password is modified, the corresponding password in the phonebook must be updated manually at the same time.
- Connection No. is for database reference only, and not related to the SMS Pro ID (Station ID) internally stored in SMS Alert Controller.

7. Reading Internal Parameters

It is useful to read the current information stored in the SMS Alert Controller. Following information will be displayed on its corresponding fields.

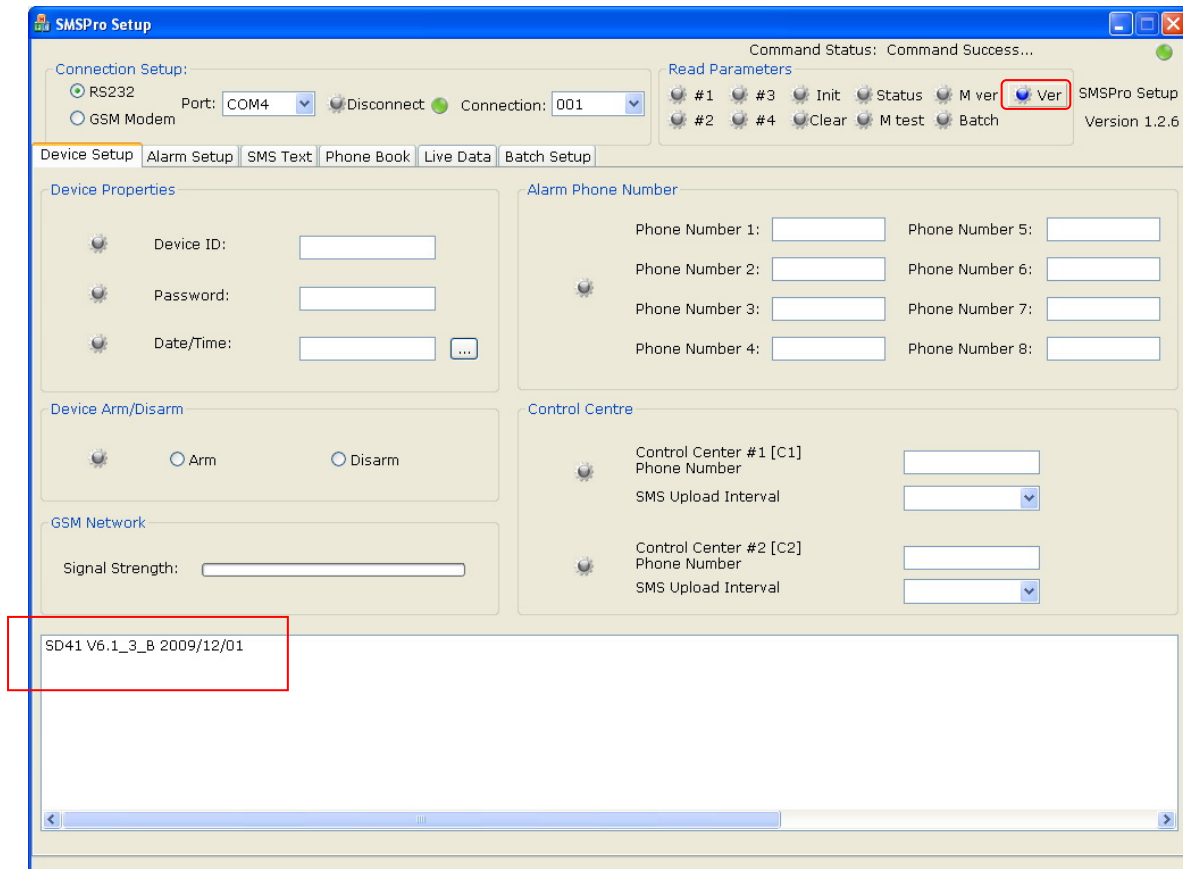
- Current configuration
- Current health status
- SMS text message associated with each alarm

Detail of each parameter# check can be found on operation manual SMS Alert Controller Manual.

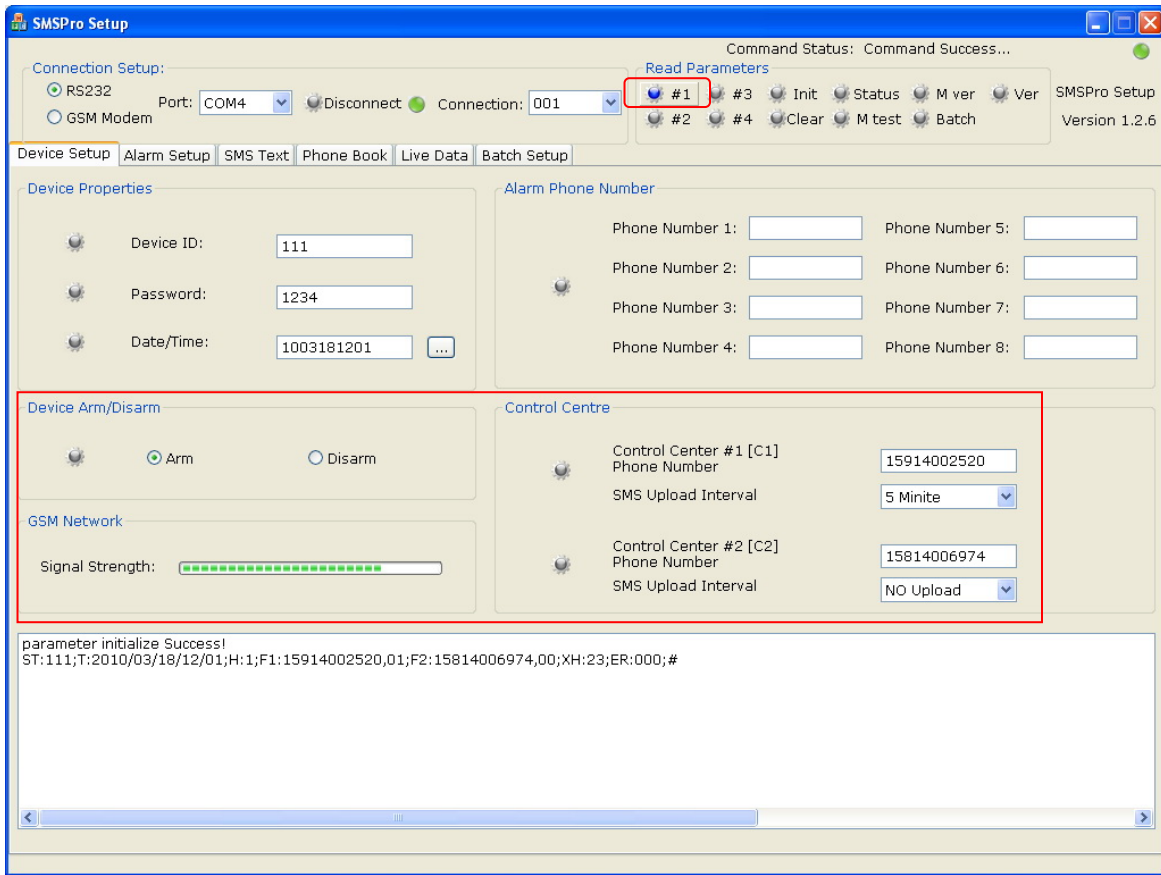
Click the buttons for corresponding parameters:

<u>Button</u>	<u>Command</u>
#1	Parameter#1 Check
#2	Parameter#1 Check
#3	Parameter#3 Check
#4	Parameter#3 Check
Status	SMS Pro Live Data
Ver	Firmware Version Check
#Init	Device Reset
Clear	Clear the information displayed

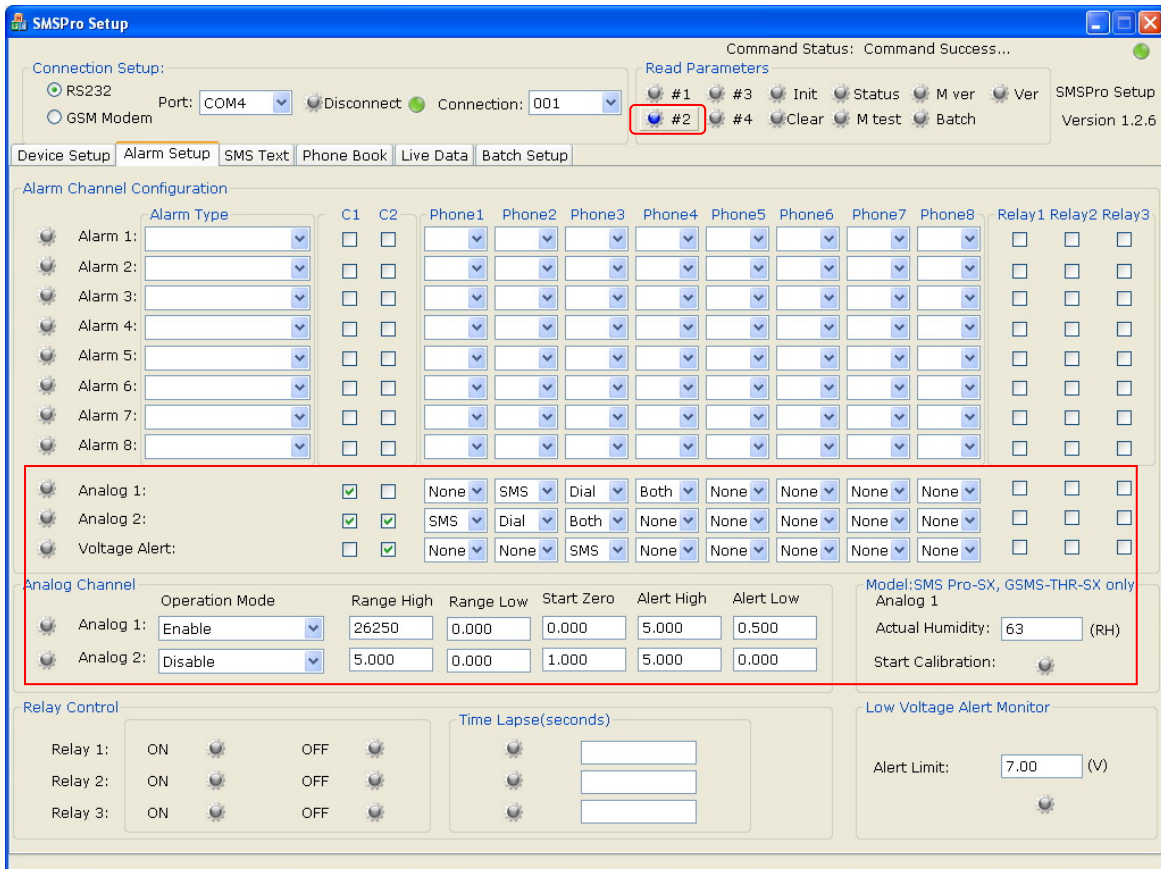
a) Click “Ver” button, the firmware version of device will be displayed as below.



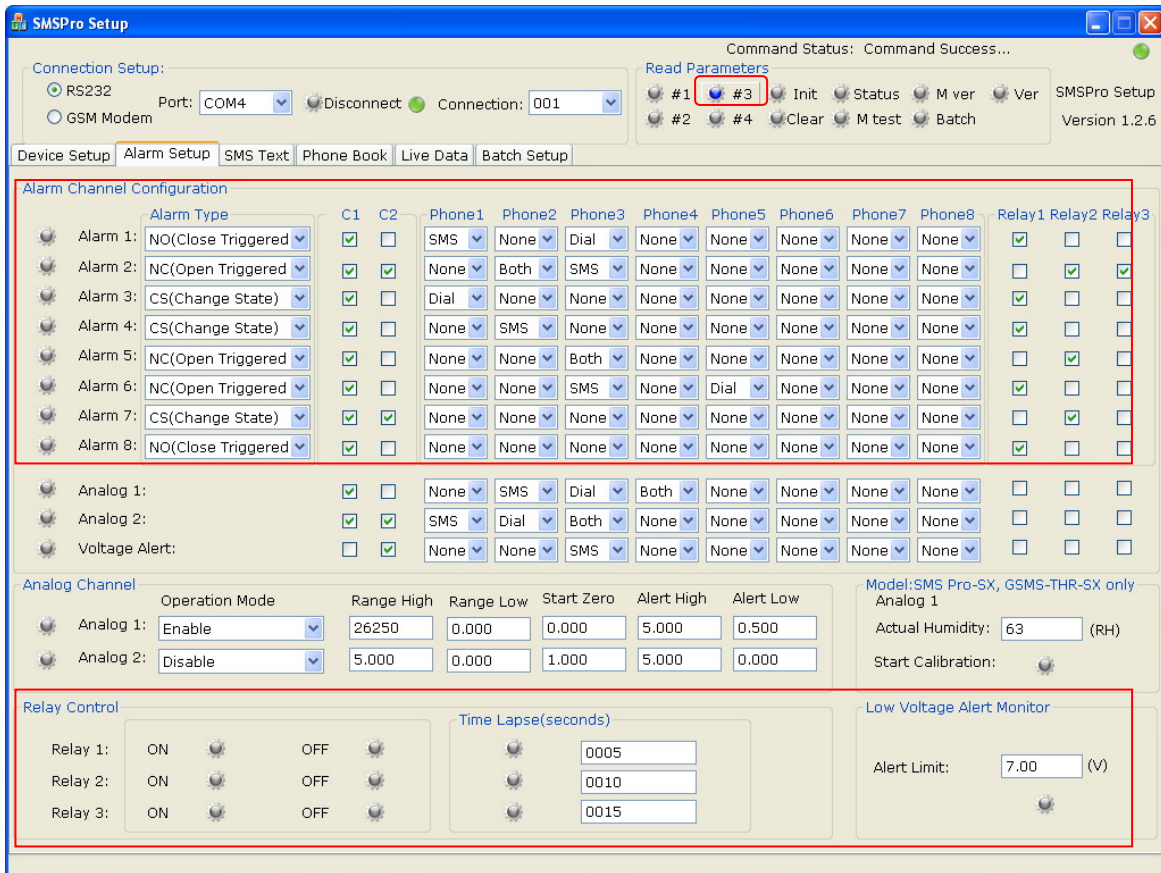
b) Click “#1” button, the Central Setting and GSM Signal Strength will be displayed as below.



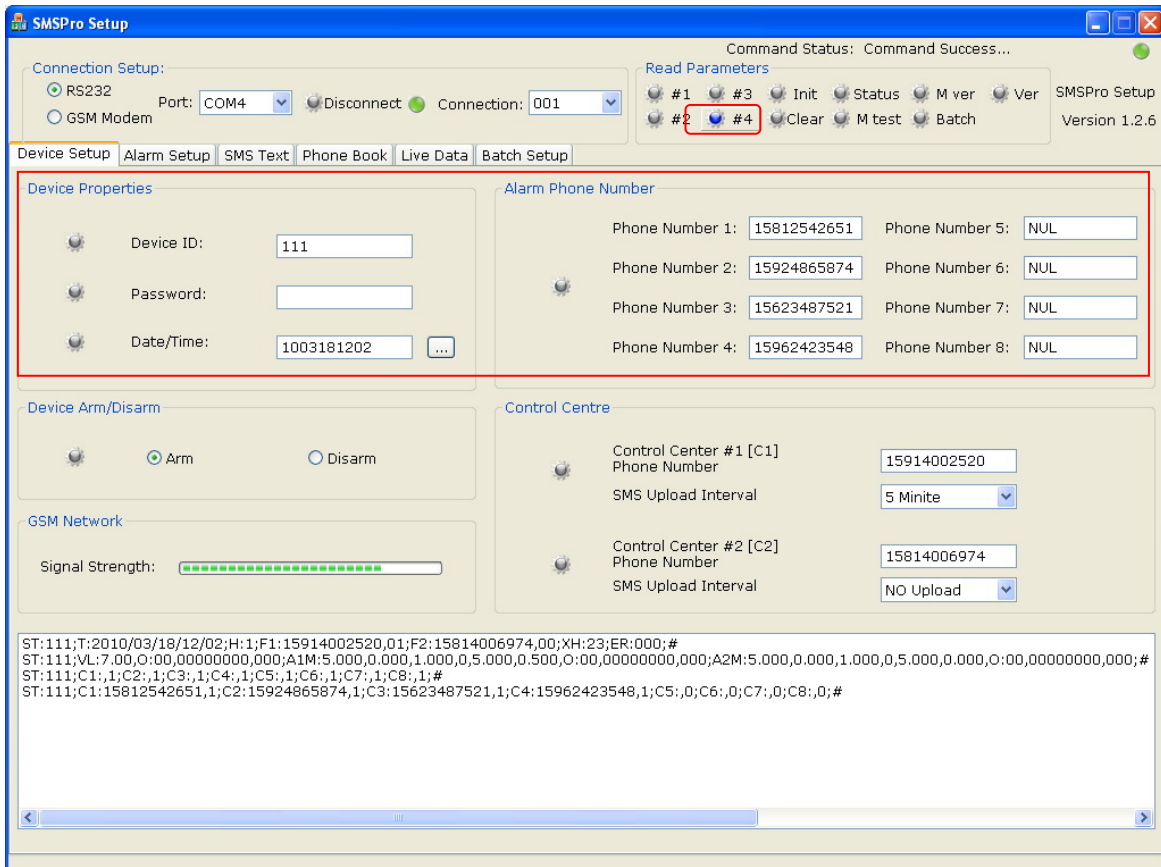
c) Click “#2” button, the Analog Alarm Setting will be displayed as below.



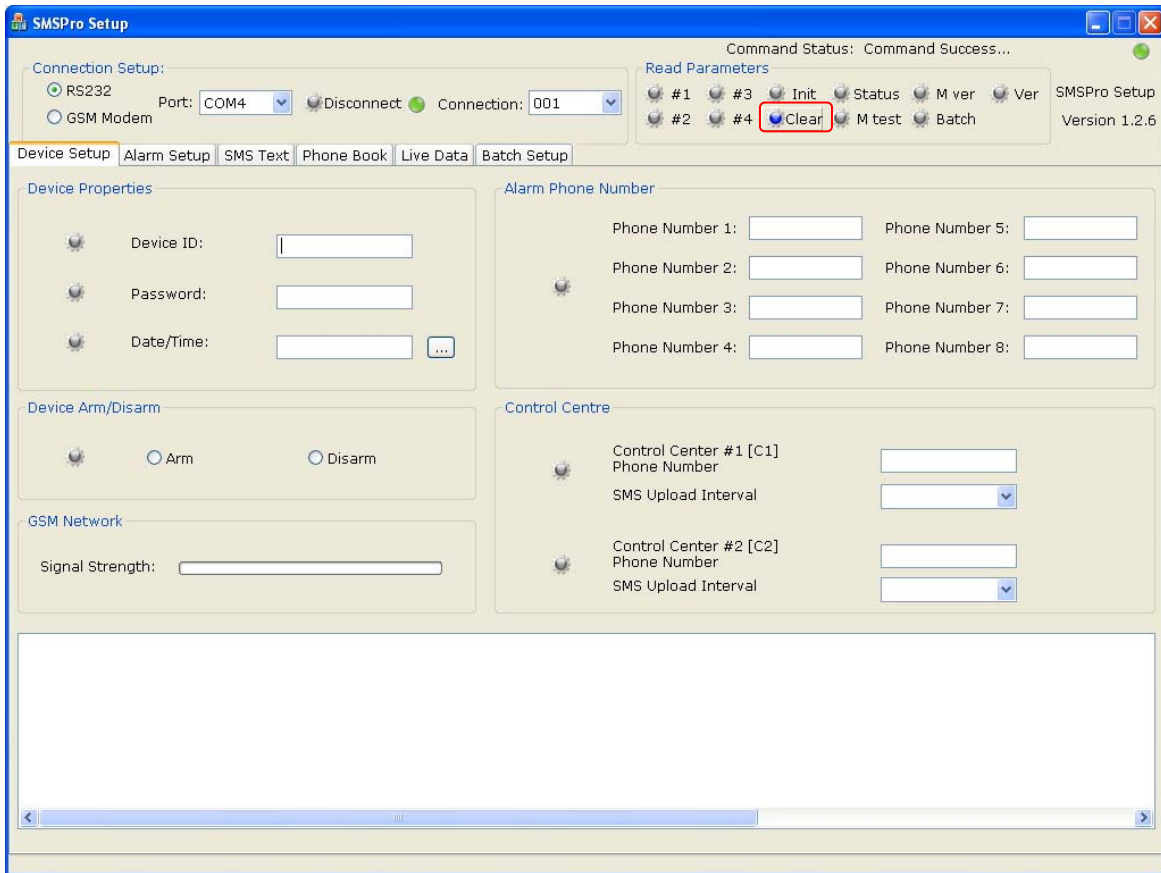
d) Click “#3” button, the Digital Alarm Setting will be displayed as below.



e) Click “#4” button, the Device Properties Setting will be displayed as below.

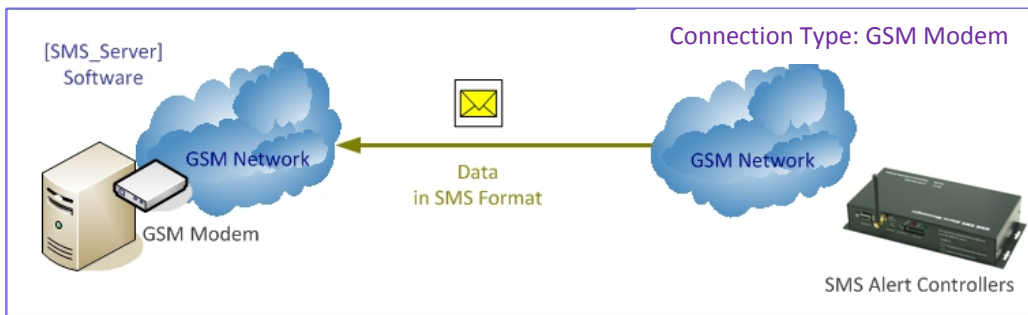
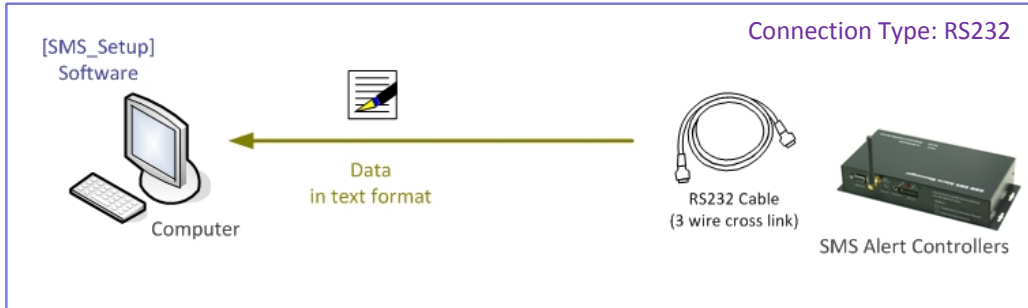


f) Click “Clear” button, all parameters displayed will be clear as below.



8. Checking Live Data

Click “Status” button, the current status of alarm input and analog input channels will be displayed as below on [Live Data] tab.



This is the same command as “PWD:1234,STATUS%” sent by mobile phone.

The screenshot shows the "SMSPro Setup" software interface. The "Live Data" tab is selected, displaying a table with columns for Station ID, Date, Time, Voltage, AD1, AD2, PO1, PO2, PO3, PO4, PO5, PO6, PO7, PO8, R01, R02, and R03. The "Status" button in the "Read Parameters" section is highlighted with a red box. A note box is overlaid on the bottom of the interface.

Note:


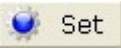
- The software will not automatically download the data from the SMS Alert Controller. It will retrieve the live data only when the [Status] button is clicked manually.
- Live Data will not be saved but only displayed. Once [Clear] button is clicked or program is closed, all data will be cleared.
- “SMSPro_Server” software will automatically download the data from SMS Alert Controller, and maintain the data records in server database.

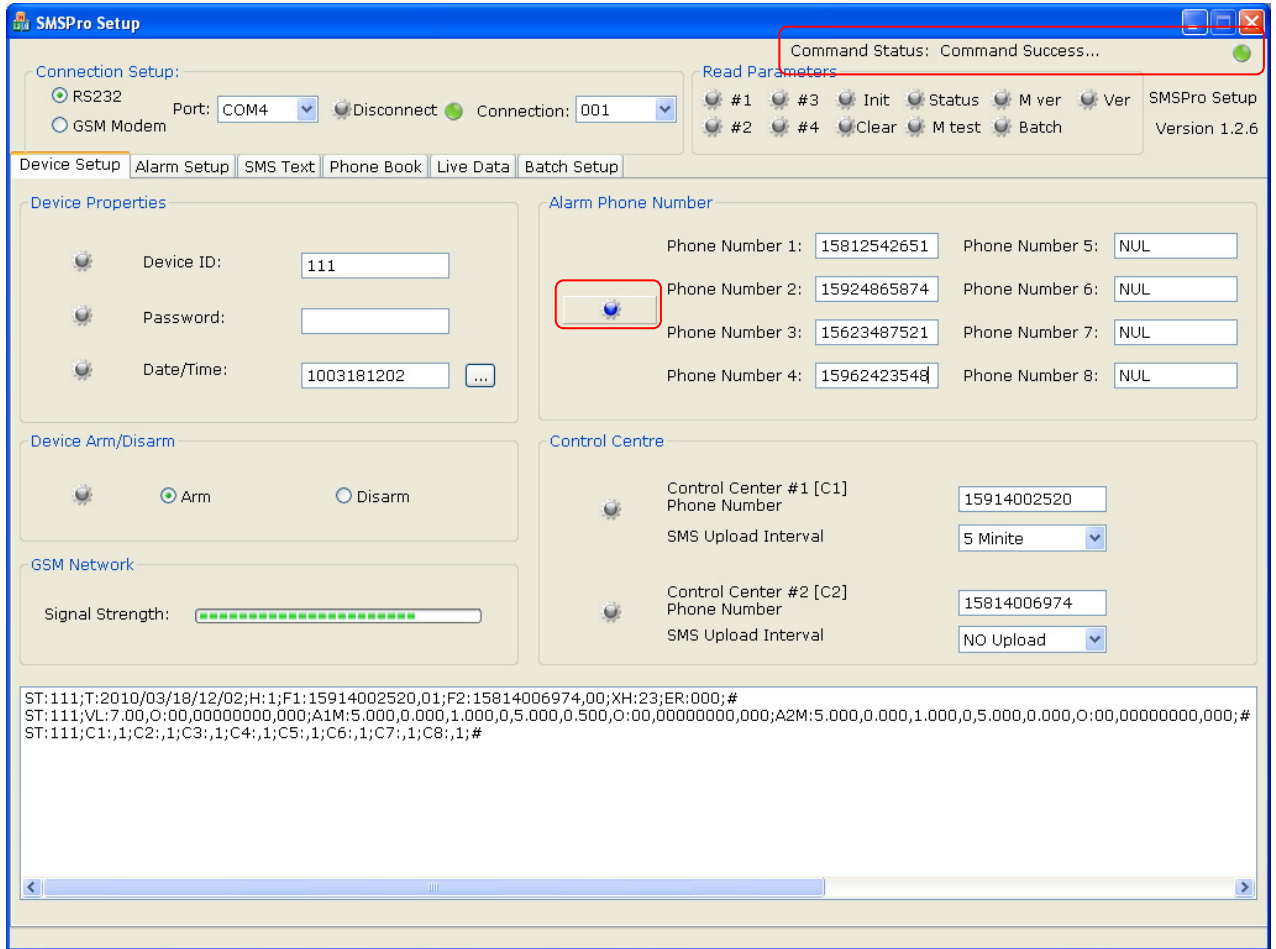
Please refer to the “SMSPro_Server” manual for the operation detail.

9. Device Setup

It is used to modify the properties of each SMS Alert Controller, and the routine operation parameters.

a) Selecting the option or modifying the parameters

b) Click  or  button to activate the command.



Note:



- Command Status will display the progress of each command.
- Select the next parameter setup only when the current command is completed.
- Please refer the information and description of each command to the Operation Manual of SMS Alert Controller.

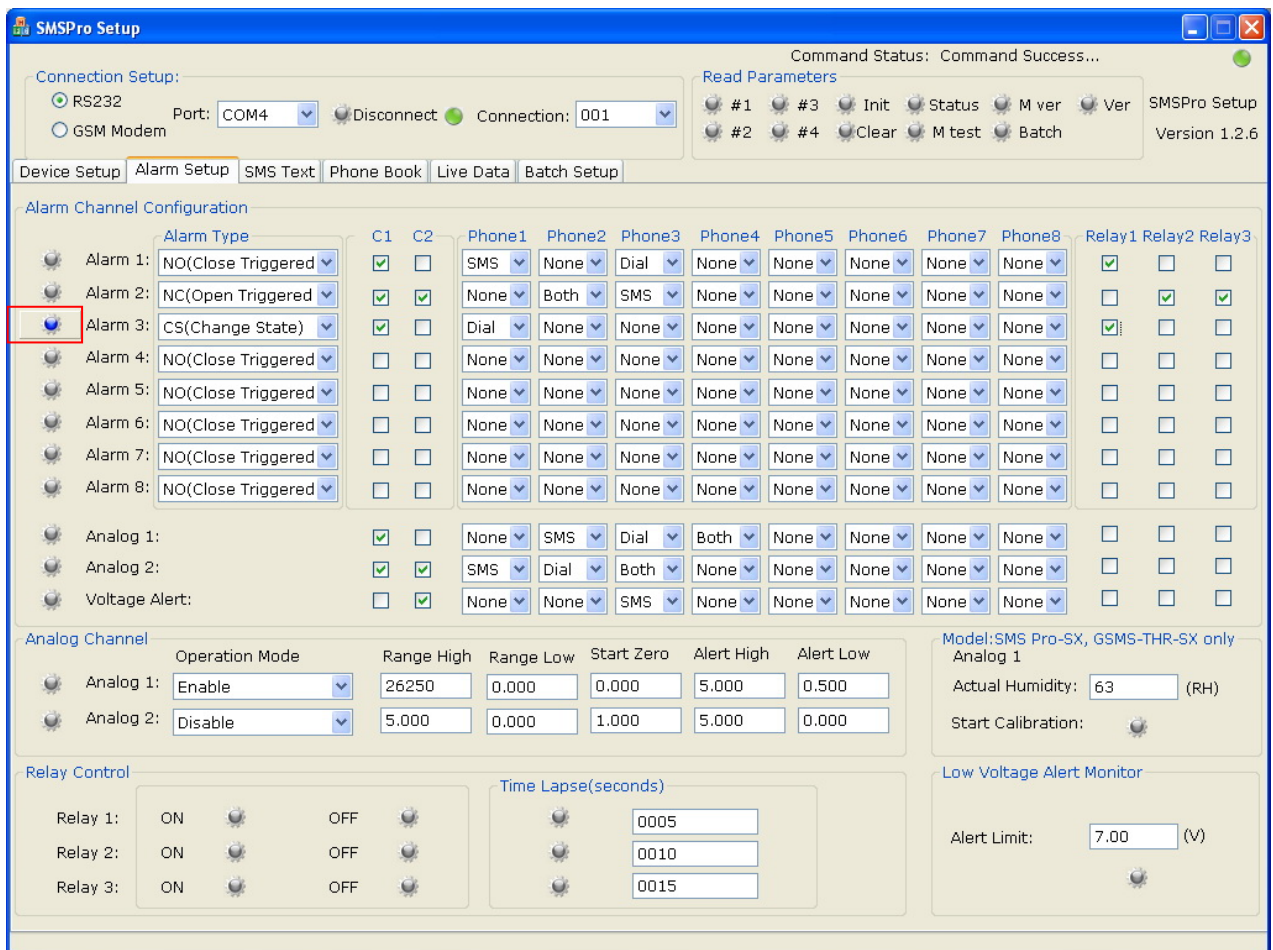
10. Alarm Setup

It is used to setup the alarm properties associated with alarm inputs and relay outputs.

- 8 x alarm inputs
- 2 x analog inputs
- 3 x relay Outputs
- Low Voltage Alert

a) Selecting the option or modifying the parameters

b) Click  or  Set button to activate the command.

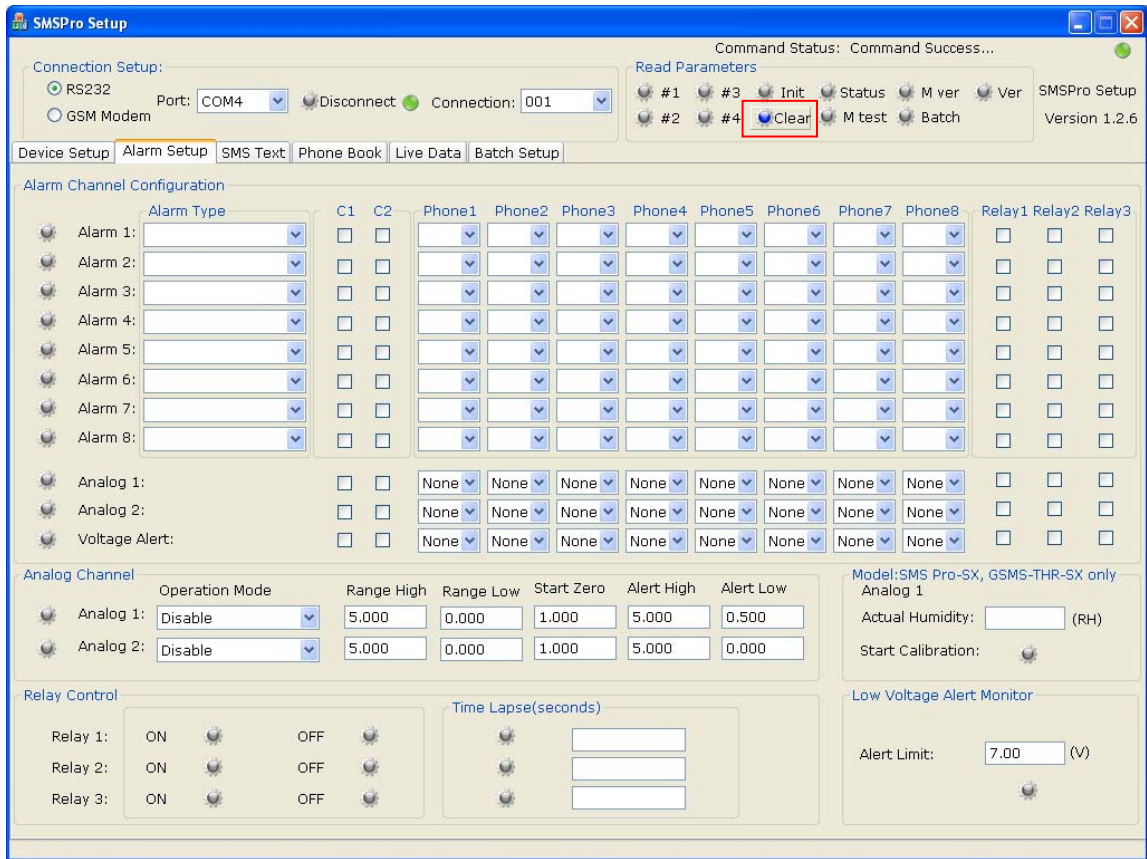


Note:

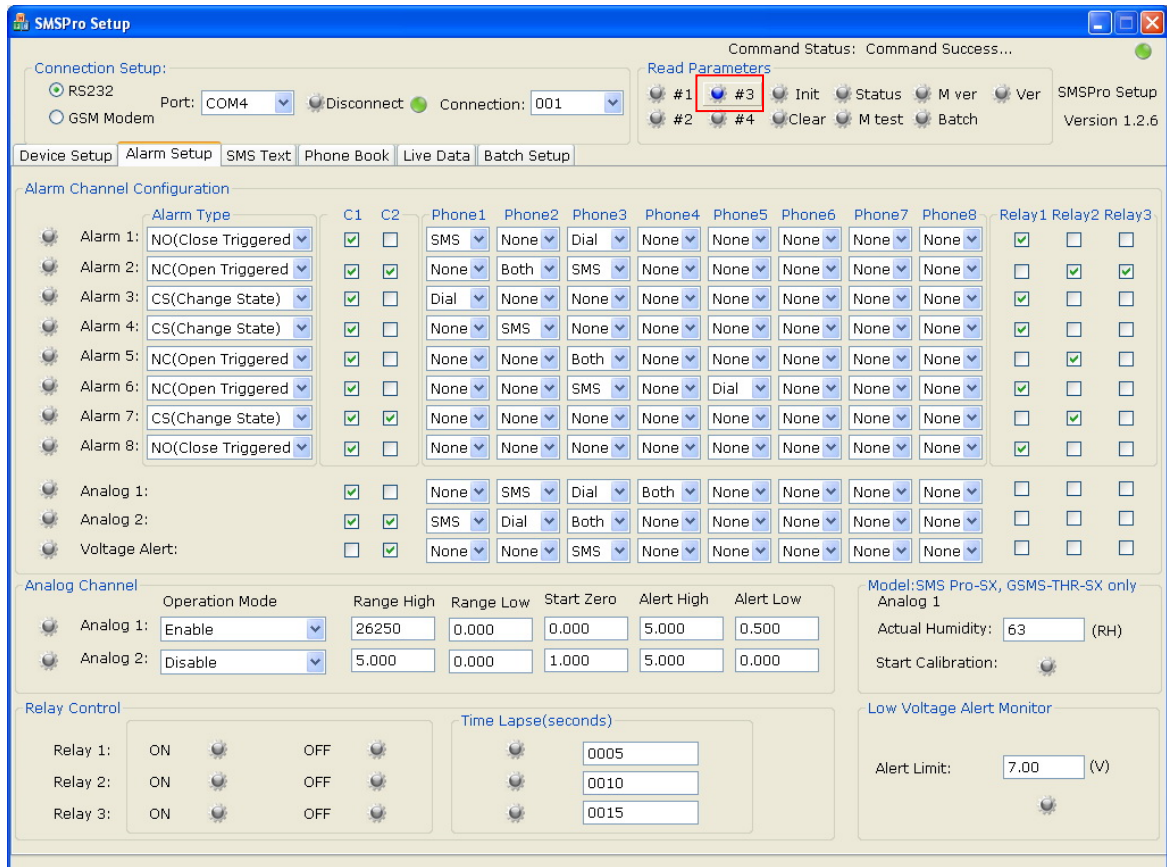
- Command Status will display the progress of each command.
- Select the next parameter setup only when the current command is completed.
- Please refer the information and description of each command to the Operation Manual of SMS Alert Controller.

To verify the setting:

First, clear the displayed settings by click [Clear] button.



Then, click [#1], [#2] or [#3] button to read the parameter setting from the device.



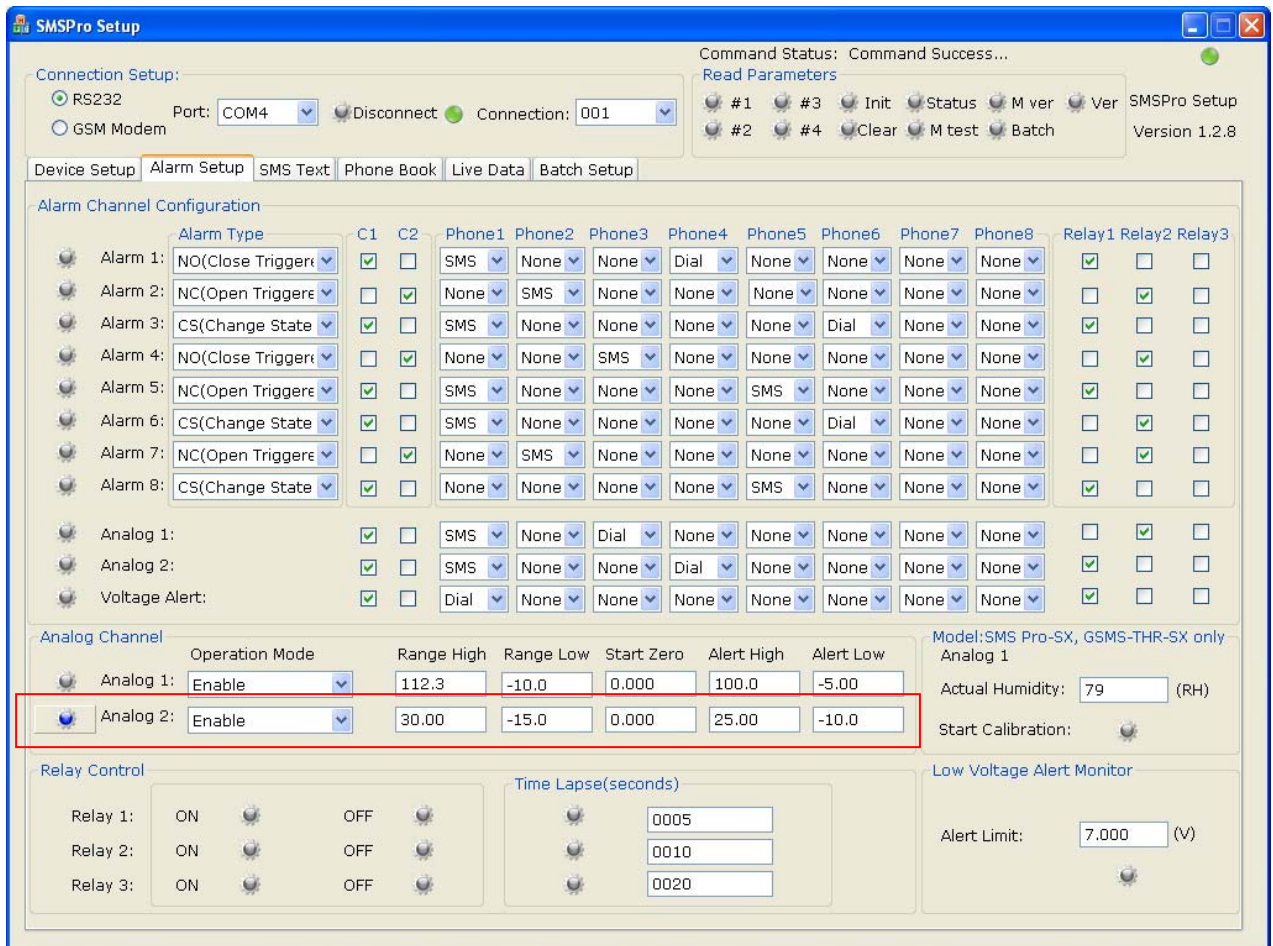
11. Temperature & Humidity Calibration [GSMS-THR-SX / THP-SX, SMS Pro-S /SX]

It is used to fine tune the accuracy of humidity sensor measurement.

A) AD2 “Analog 2” channel is connected to the temperature sensor.

Since digital temperature sensor is used, there is no need of calibration.

Values of [Range] and [Start Zero] will be ignored.



B) AD1 “Analog 1” channel is connected to the humidity sensor.

- o There are many factors e.g. temperature affecting the output value of humidity sensor.
- o SMS Alert Controller provides the [Range] parameter for user calibration.
- o In most cases, the factory default setting is calibrated for general environmental application.
 - Start Zero: 00000
 - Range: 00120
- o Under any circumstances, range adjustment is recommended to be within 100~150.

“SMSPro_Setup” provides **automatic calibration** function for humidity measurement.

- 1) Prepare an accurate humidity measuring instrument
- 2) Put the instrument and SMS Alert Controller’s humidity sensor in same place
- 3) Take the reading from the instrument
- 4) Enter the reading into the “Actual Humidity”



The screenshot shows the SMSPro Setup software interface. The 'Analog Channel' section is highlighted with a red box. It shows the configuration for Analog 1, where the 'Actual Humidity' is set to 63 (RH) and the 'Start Calibration' button is visible. Below this, another screenshot shows the 'Analog Channel' section with 'Analog 1' set to 'Enable' and 'Alert High' set to 100.0, and 'Alert Low' set to -5.00. The 'Range High' is 112.3 and 'Range Low' is -10.0. The 'Start Zero' is 0.000. The 'Relay Control' section shows three relays with 'Time Lapse' set to 0000 seconds. The 'Low Voltage Alert Monitor' section shows an 'Alert Limit' of 7.00 (V).

- 5) Click button [Start Calibration]
- 6) Calibration is done!
- 7) Keep the values of “Range” and “Start Zero”, but only modify the “Alert High” and “Alert Low” for alarm level purpose
 - In the above case, “Range” is configured to 116.9 by Auto Calibration.
 - DO NOT change “Range” & “Start Zero”
 - When humidity is higher than 90% or lower than 20%, alarm SMS will be sent.

12. SMS Text

It is used to setup the SMS text message when corresponding alarm is triggered.

Each alarm can be programmed to independent text message.


- 8 x alarm inputs – close triggered
- 8 x alarm inputs – open triggered
- 2 x analog inputs [Temperature & Humidity]
- Low Voltage Alert

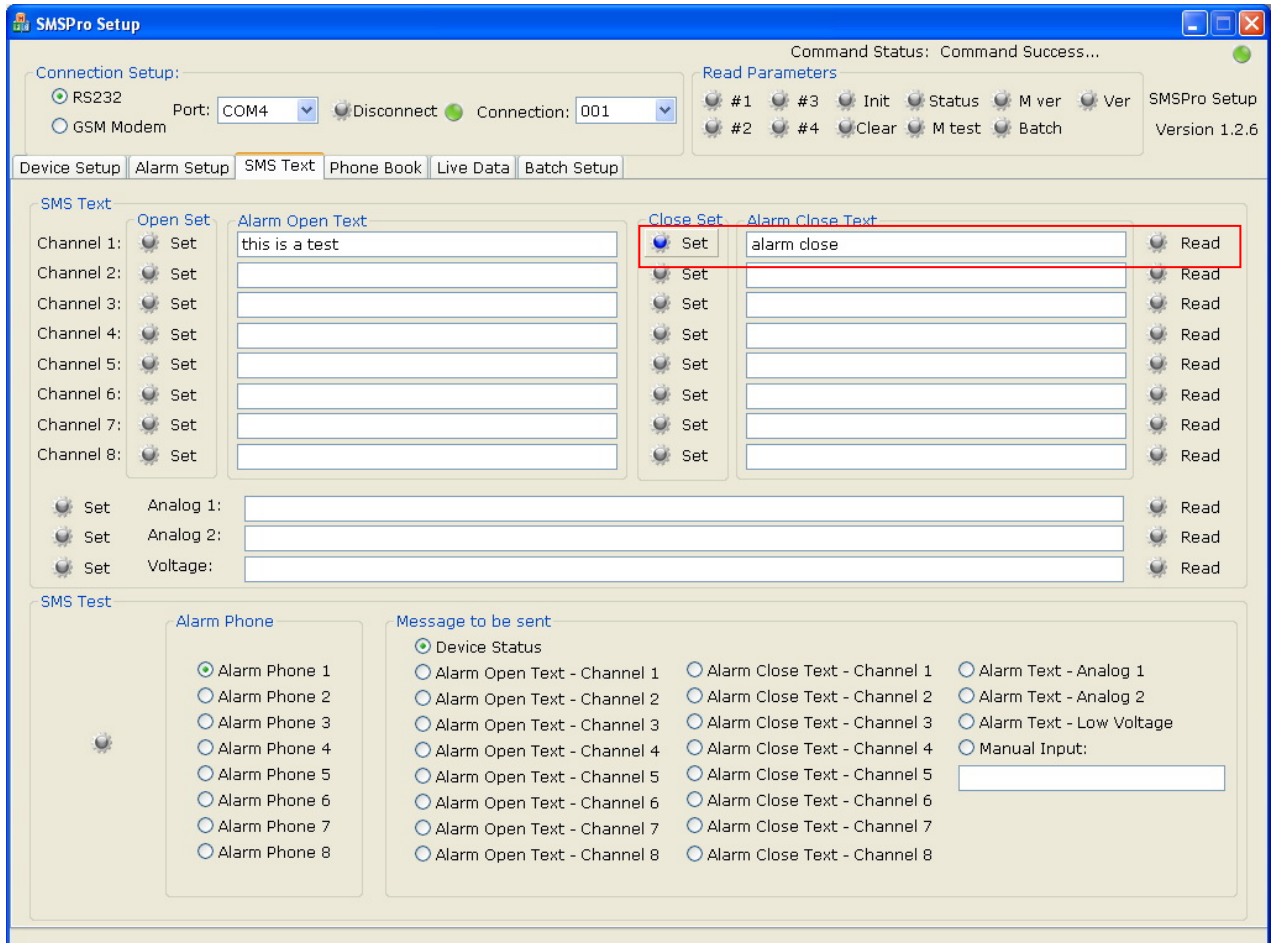
A) SMS Text Setup

This is to setup the alarm SMS text which will be delivered to user mobile phone when alarm is triggered.

Each alarm can be configured with its own individual SMS text for close and open triggered.

a) Selecting the channel

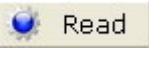
b) Click  Set button to set the alarm SMS text into the device

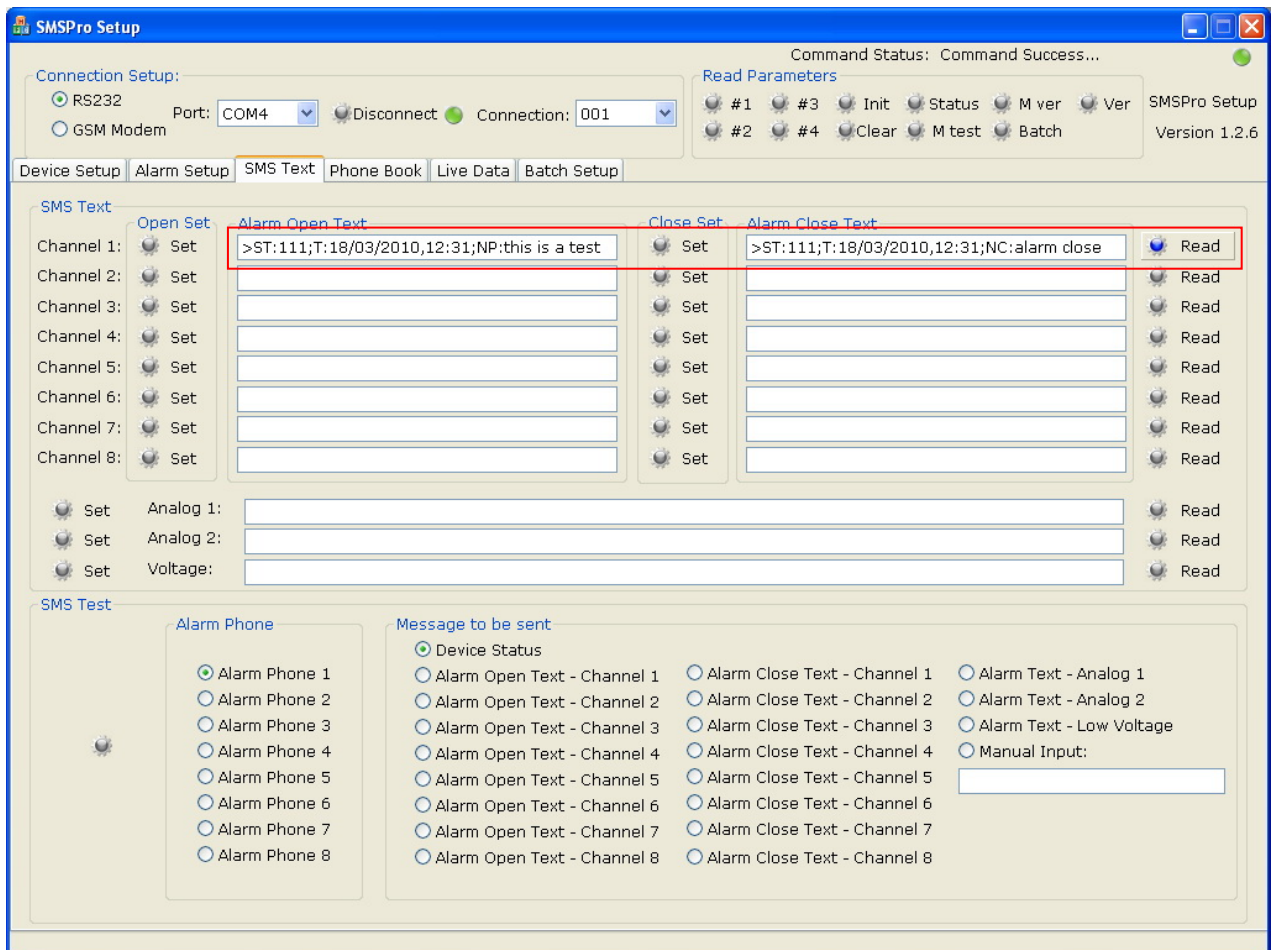


B) SMS Text Read

This is to read the configured SMS text from the device, in order to verify the setting.

a) Selecting the channel

b) Click  button to read the alarm SMS text set from the device



Notes:


- [Read] command will display the SMS Alert Controller - ID, date/time, voltage, and the alarm SMS text
- It is only necessary to input the alarm SMS text in the [Set] command, but no ID, date/time etc.

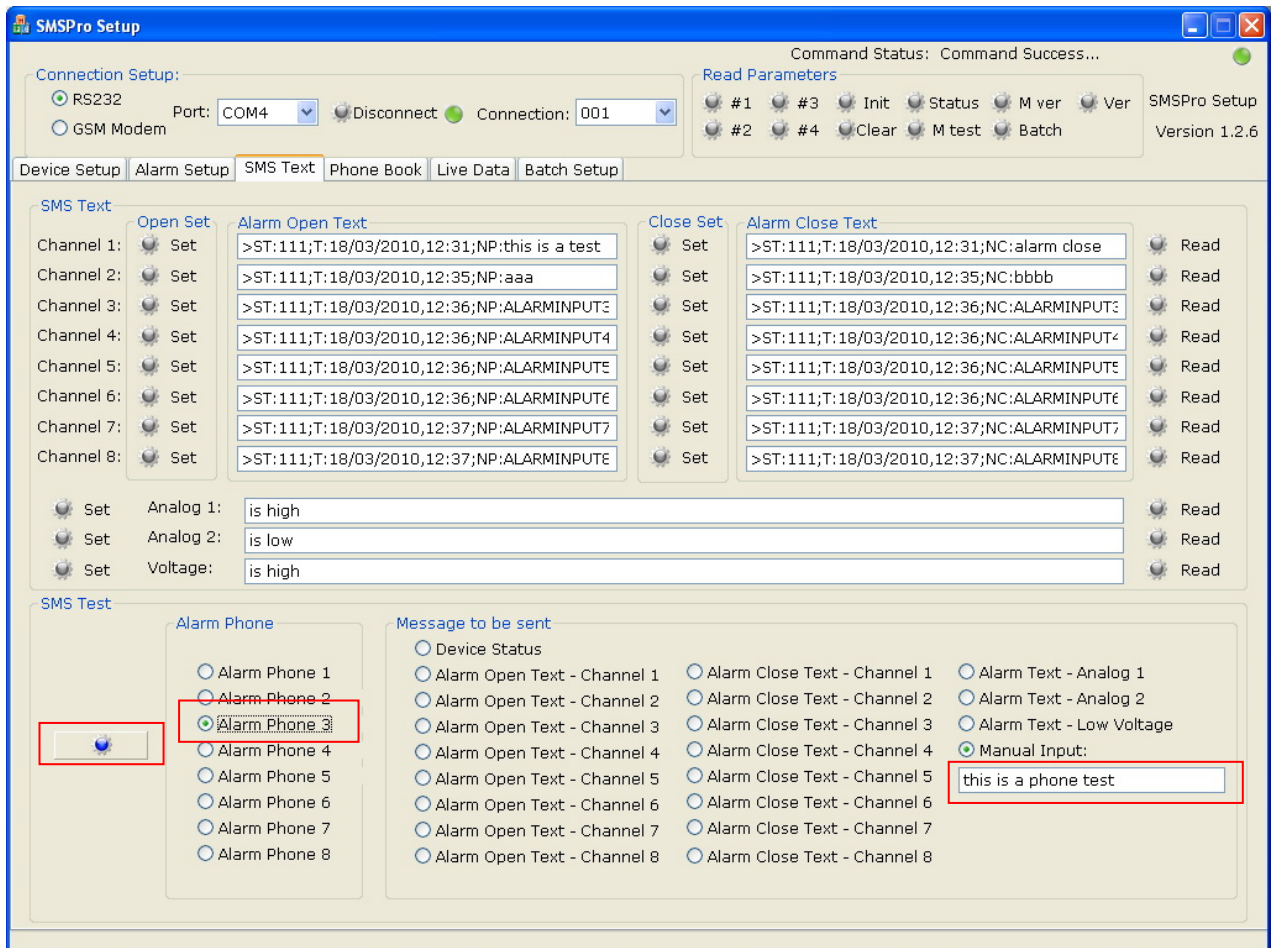
SMS Pro-S, SMS Pro-SX, GSMS-THR-SX


- Analog 1: SMS Text will be sent when humidity is higher or lower than preset value
- Analog 2: SMS Text will be sent when temperature is higher or lower than preset value

C) SMS Text Testing

This is to instruct the device sending the configured SMS text to alarm phone number for testing purpose.

- a) Selecting the alarm phone number, and alarm channel
- b) Click  button to send the SMS alarm text of selected alarm channel to the selected alarm phone number
- c) "Manual Input" allows user to input any text message instead of preconfigured alarm text



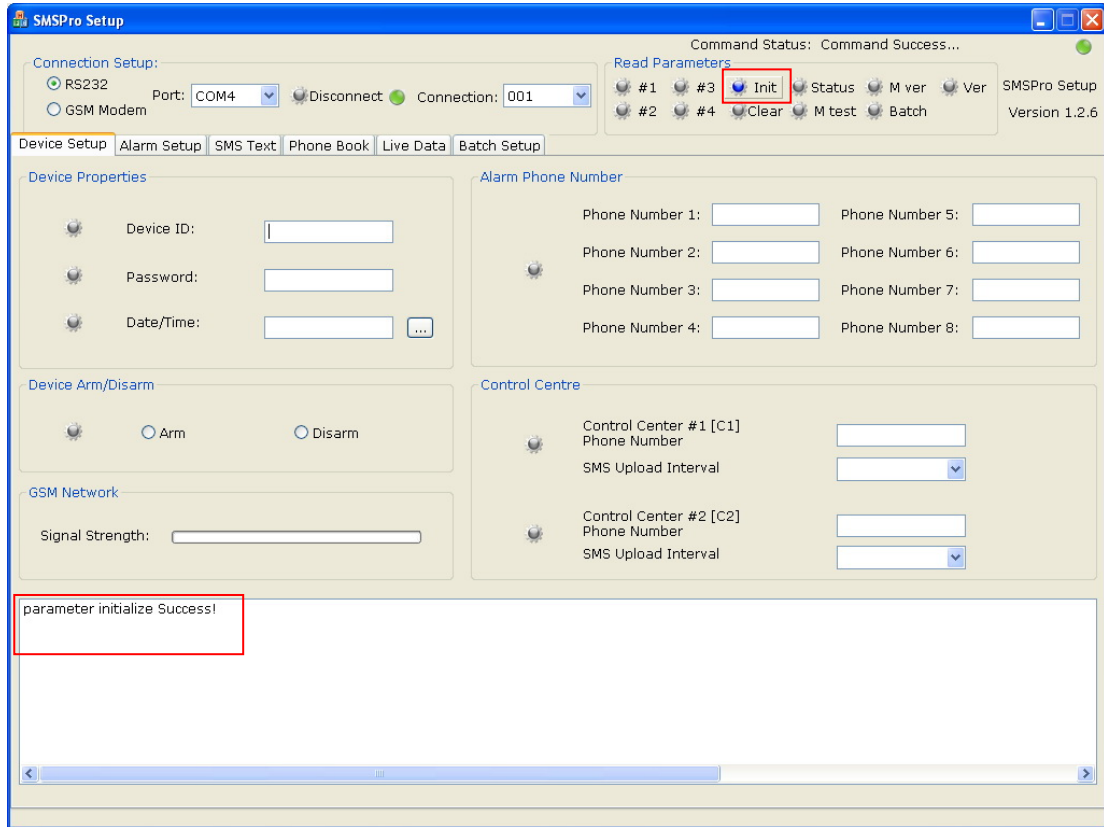
In the above example, the SMS text "this is a phone test" will be sent to alarm phone 3 when the  button is clicked.

 Alarm Phone 1 must be configured in the device setup tab in advance.

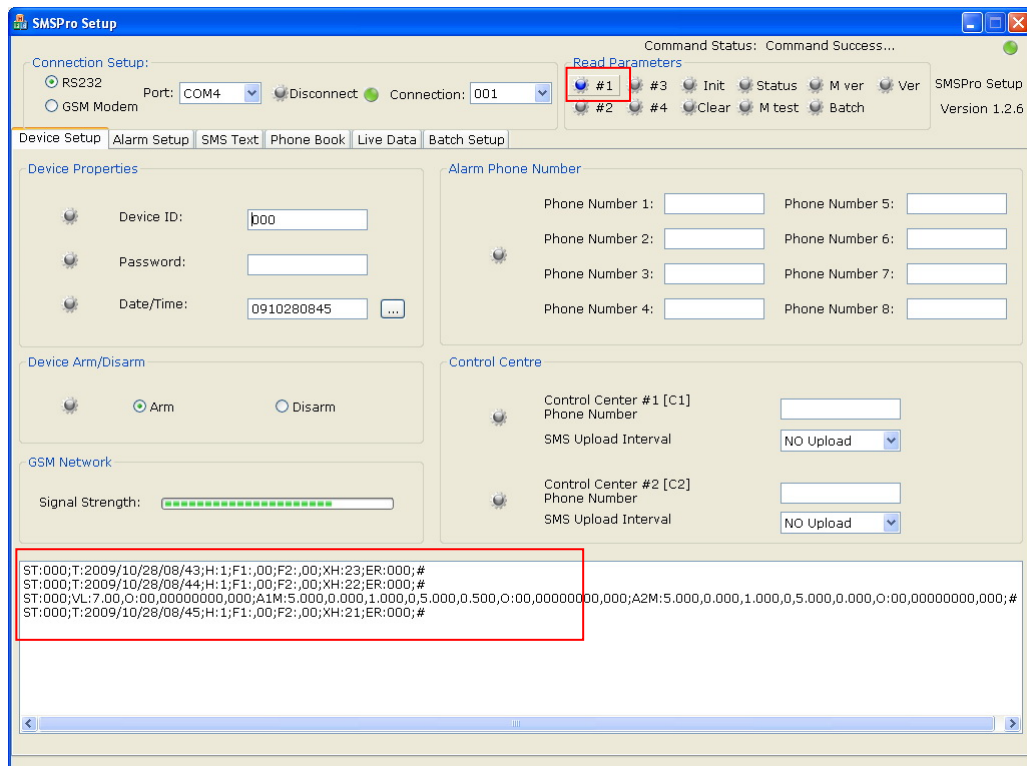
13. Device Reset

It is used to reset all the parameters and password into default setting. Password in phone book should be reset to default setting manually.

- a) Press <Ctrl> key, and click [Init] button

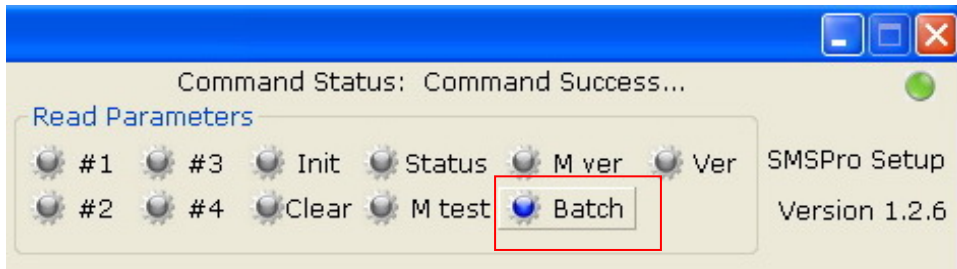


- b) Click [#1] button to check the default setting after reset.

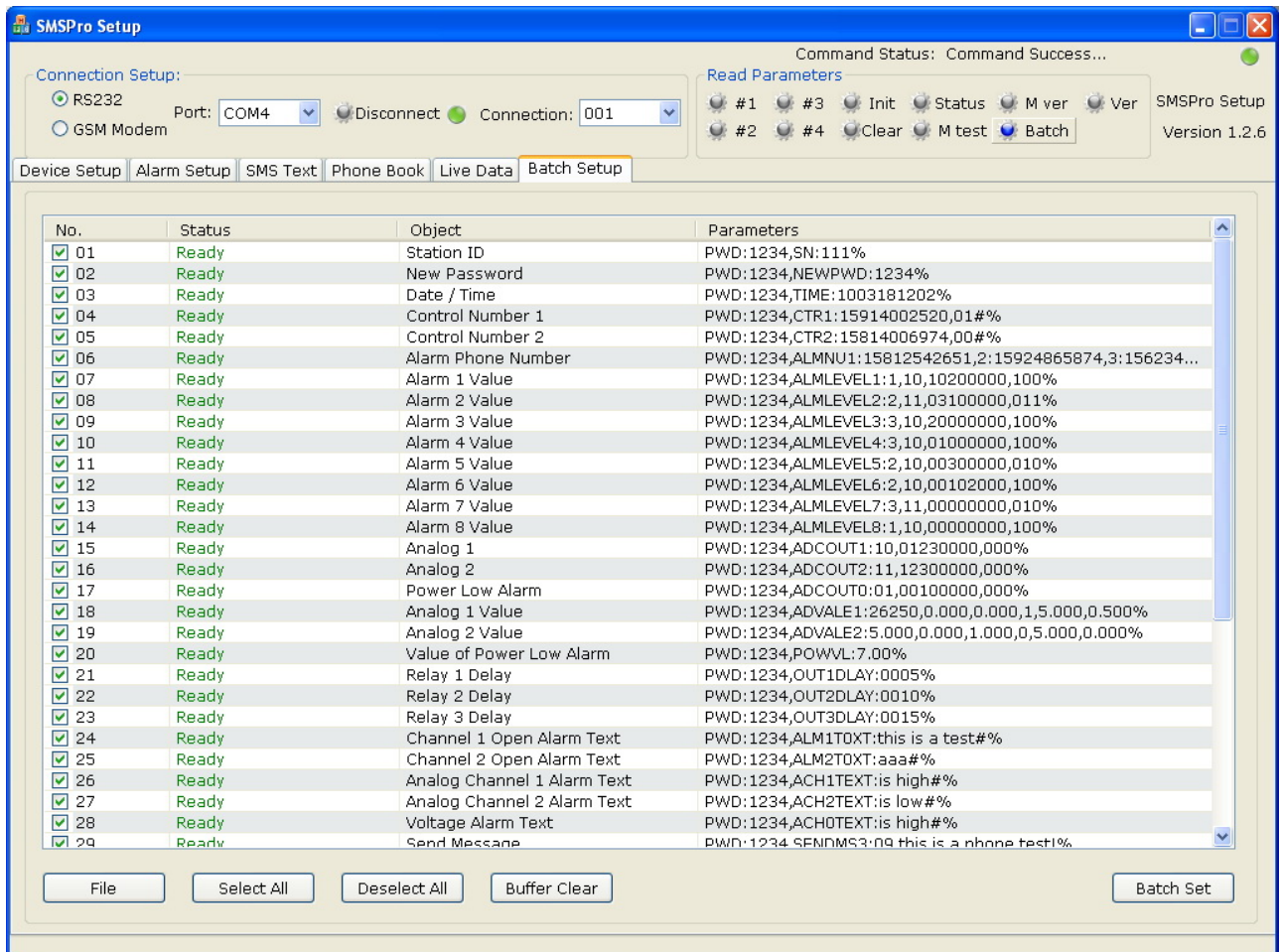


14. Save Configuration in Batch

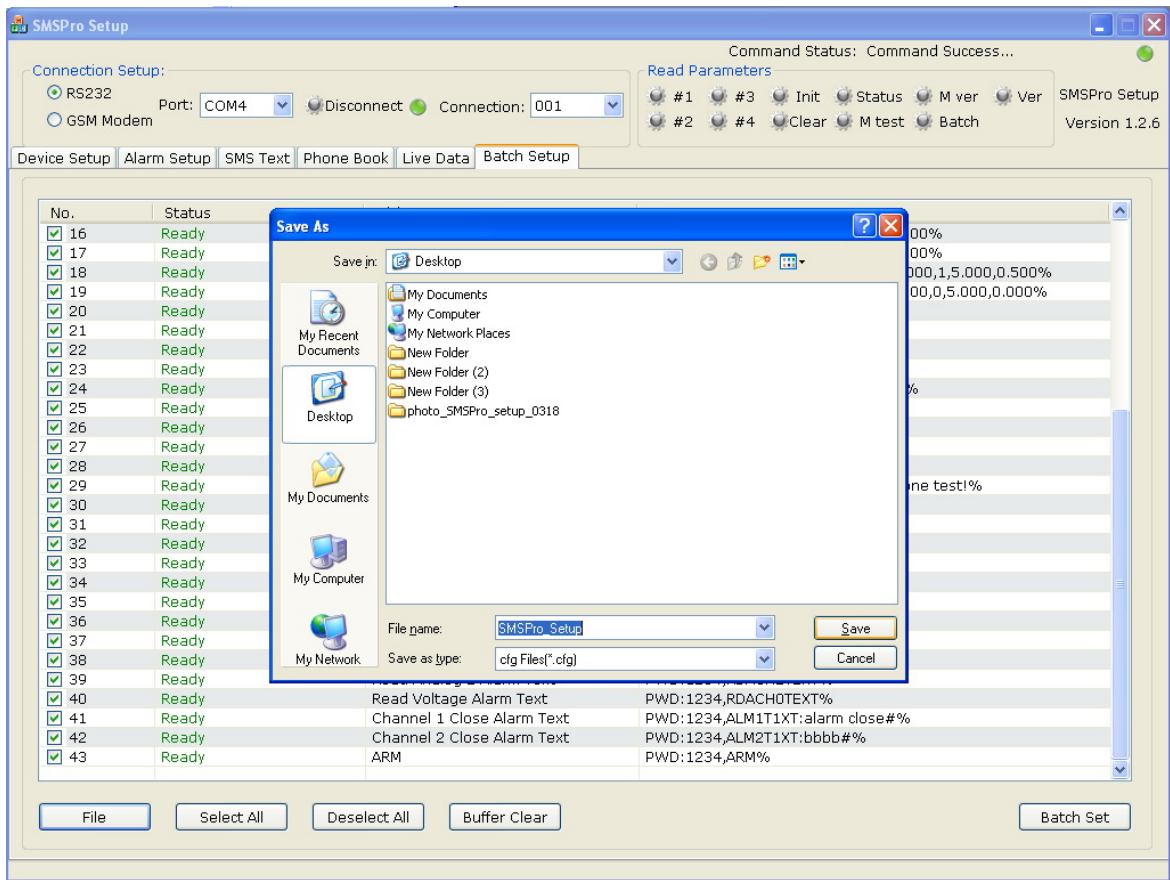
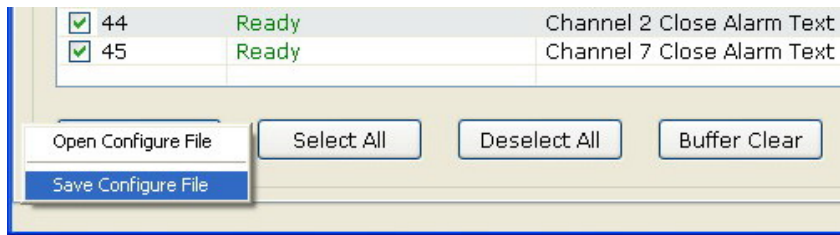
This is to allow user to read all the parameters from the device connected in one single button.



After completing the setup of each channel and other properties in previous sections, click [Batch] button to retrieve all the parameters from the device.



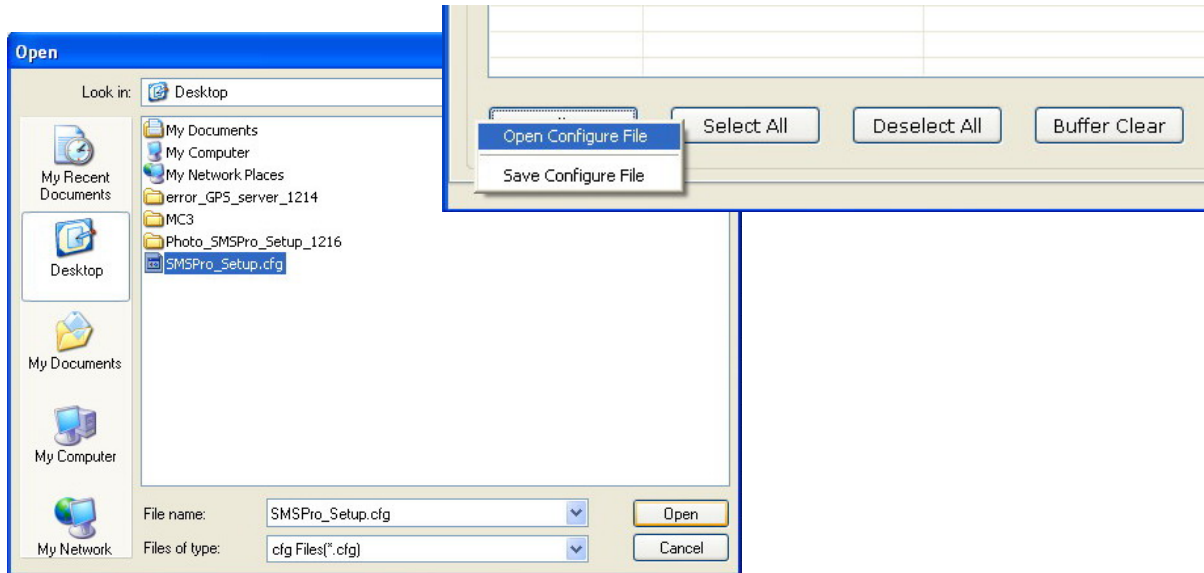
Right click the [File] button, and select “Save Configure File”.



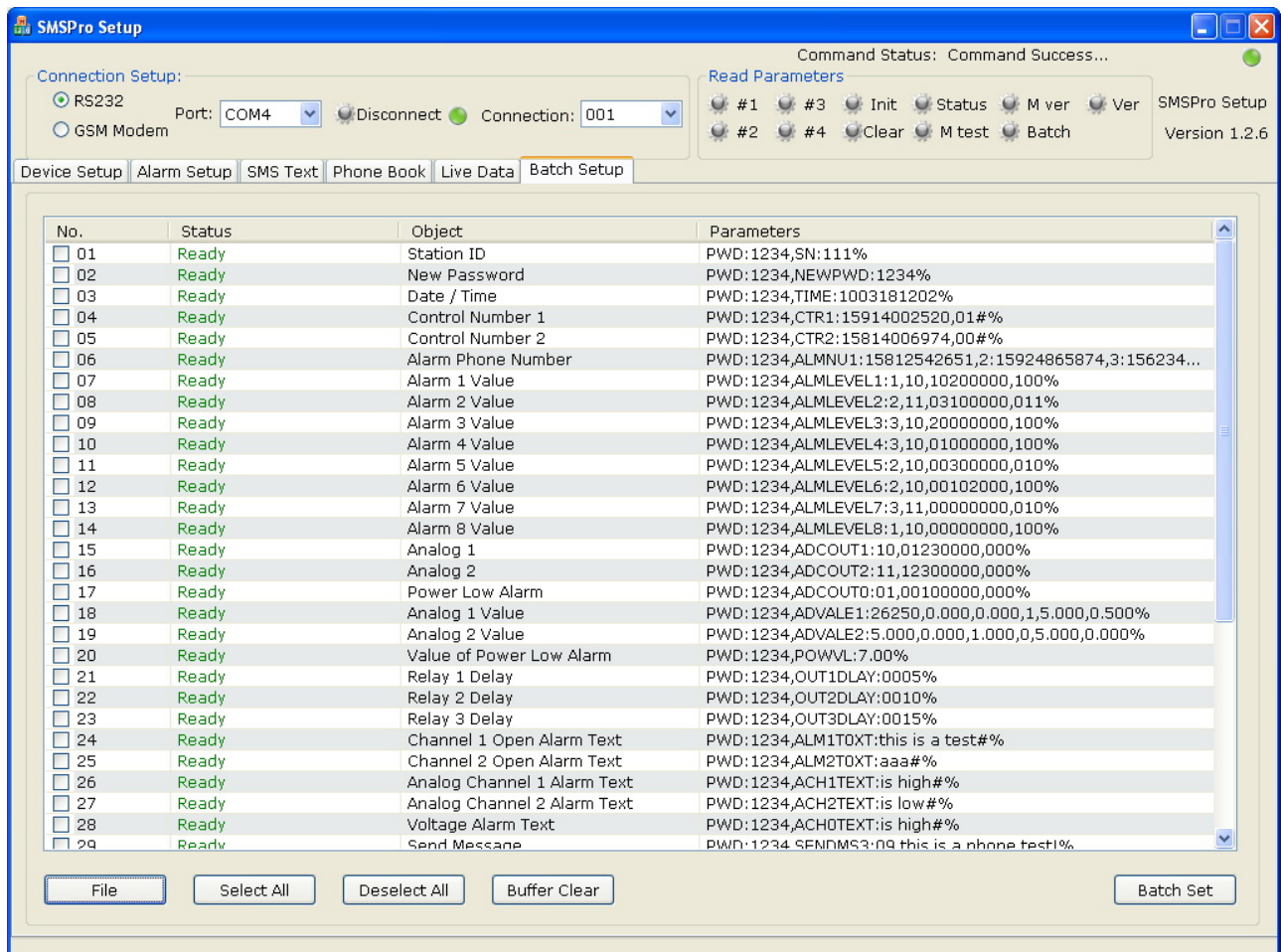
The configuration parameters will be saved in “SMSPro_Setup.cfg” file.

15. Batch Setup

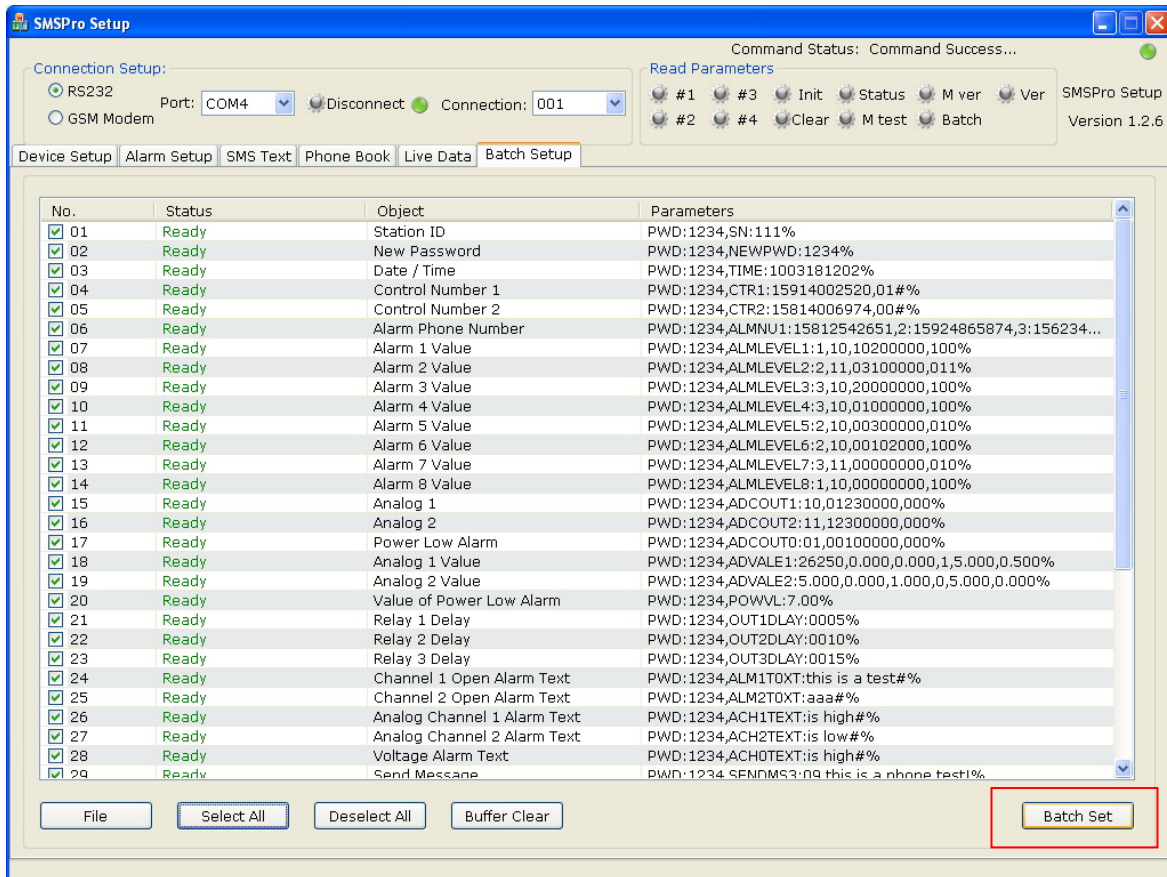
This is to allow user to open the saved configuration file, and setup all the parameters to the device connected in one single button.



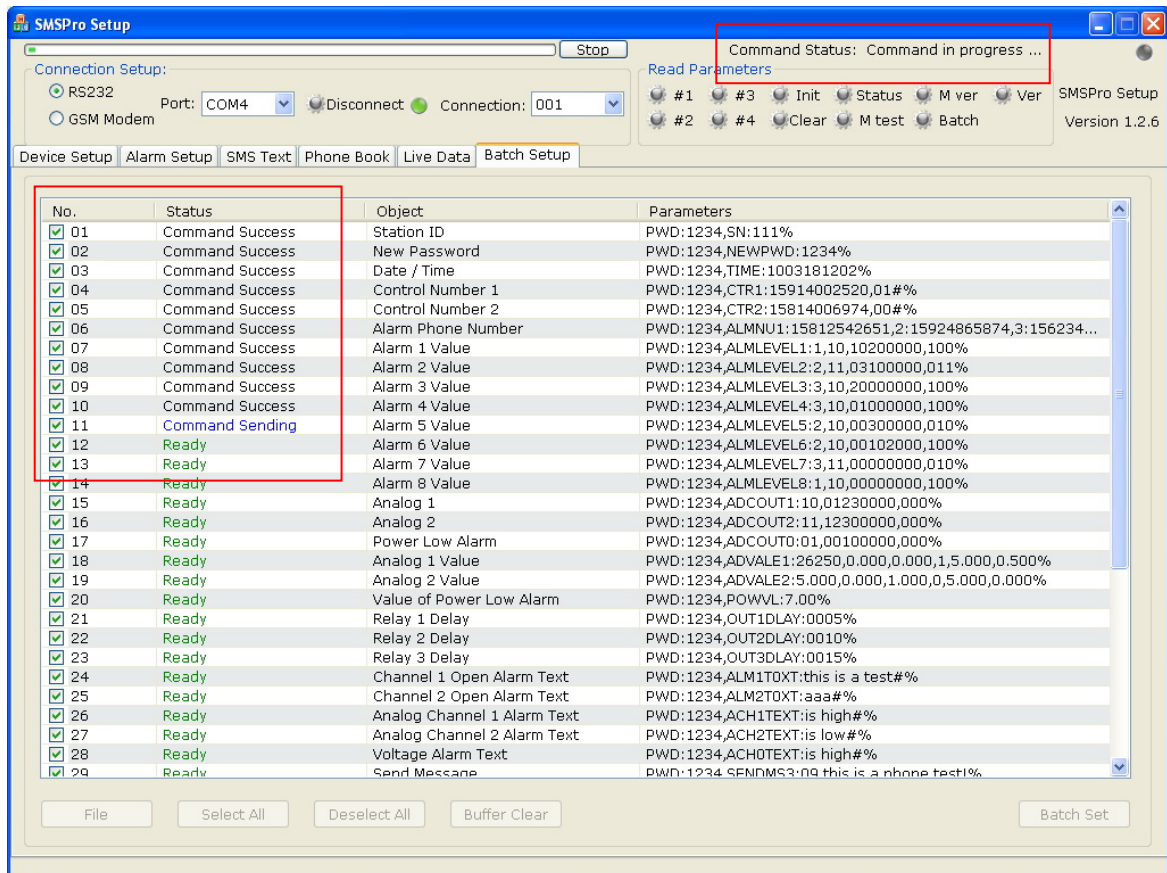
All parameters will be retrieved and displayed as below.



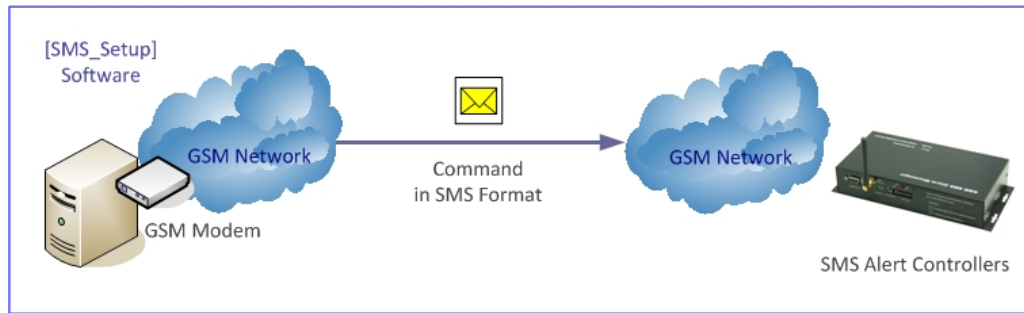
Click [Select All], and then [Batch Set]. It will start to setup the selected parameters automatically.



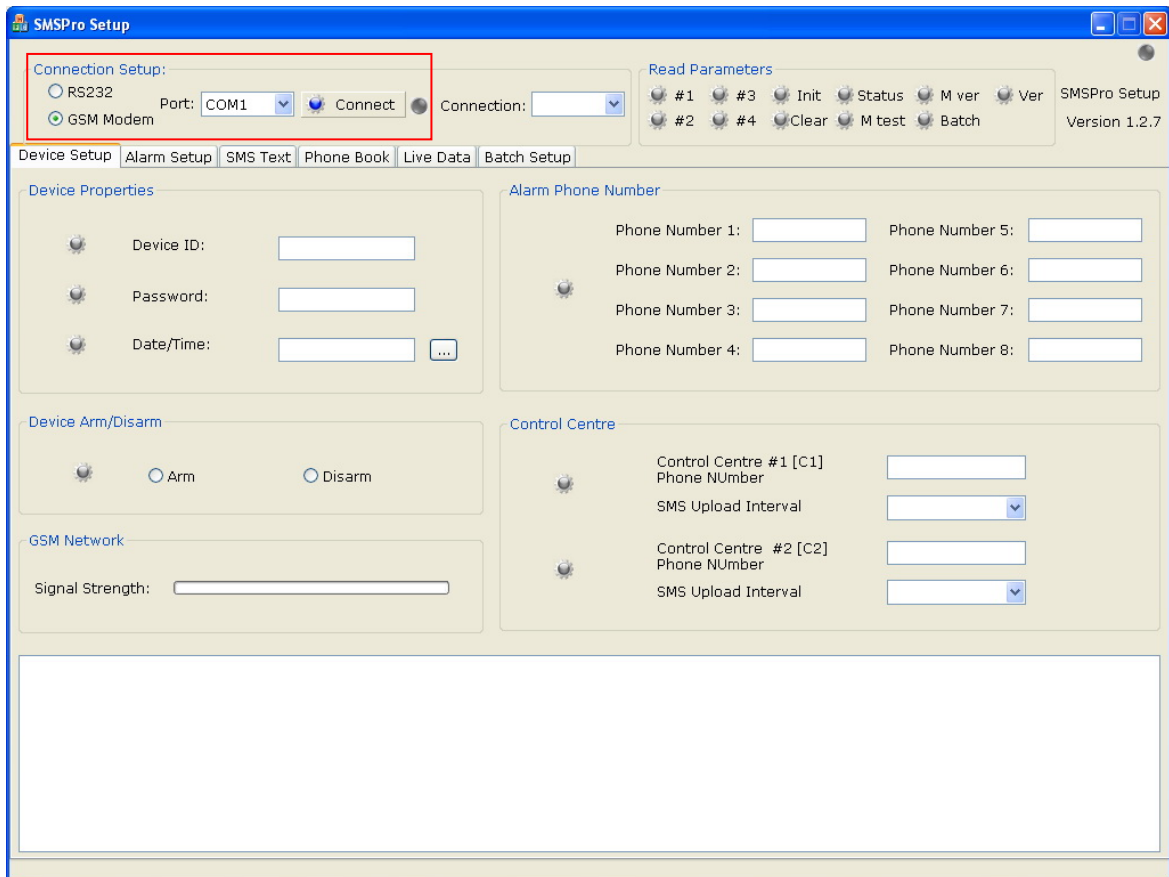
Each parameter will be configured into the device one by one, and status will be displayed.



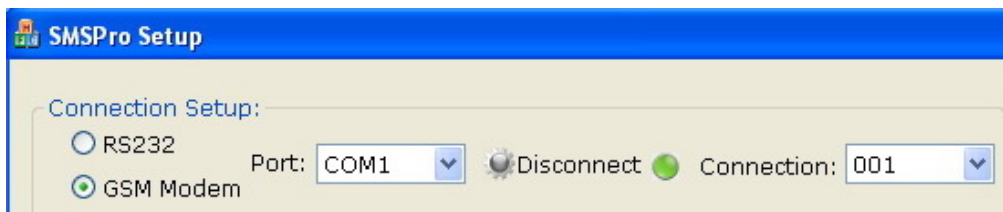
16. Remote Setup via GSM Modem



- Connect the GSM Modem GS300 with “Direct Link Serial Cable”, select [GSM Modem] and COM port
- Click [Connect] button, green LED indicates the successful connection

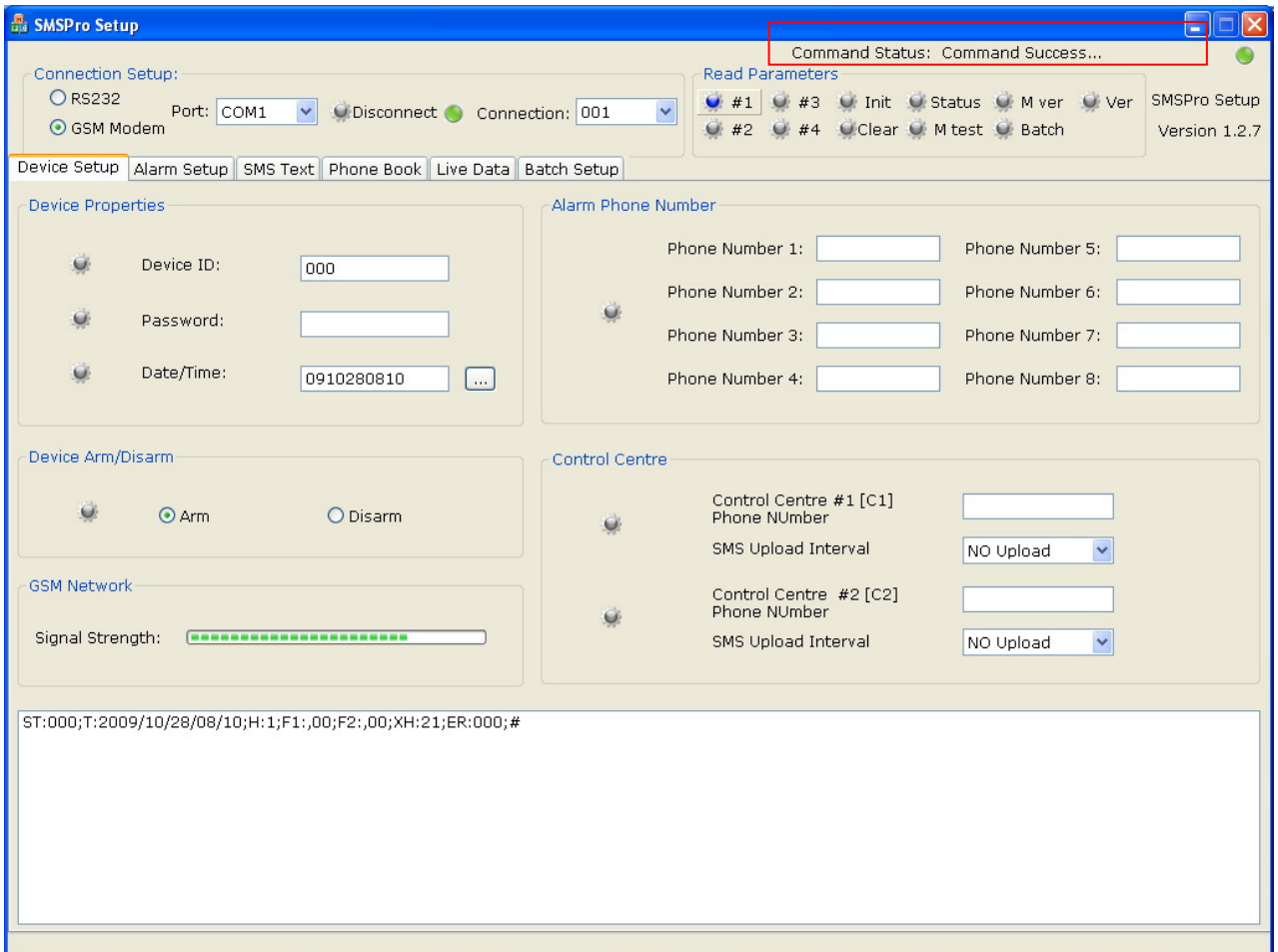


- Select Connection No. which should be preset in phone book.



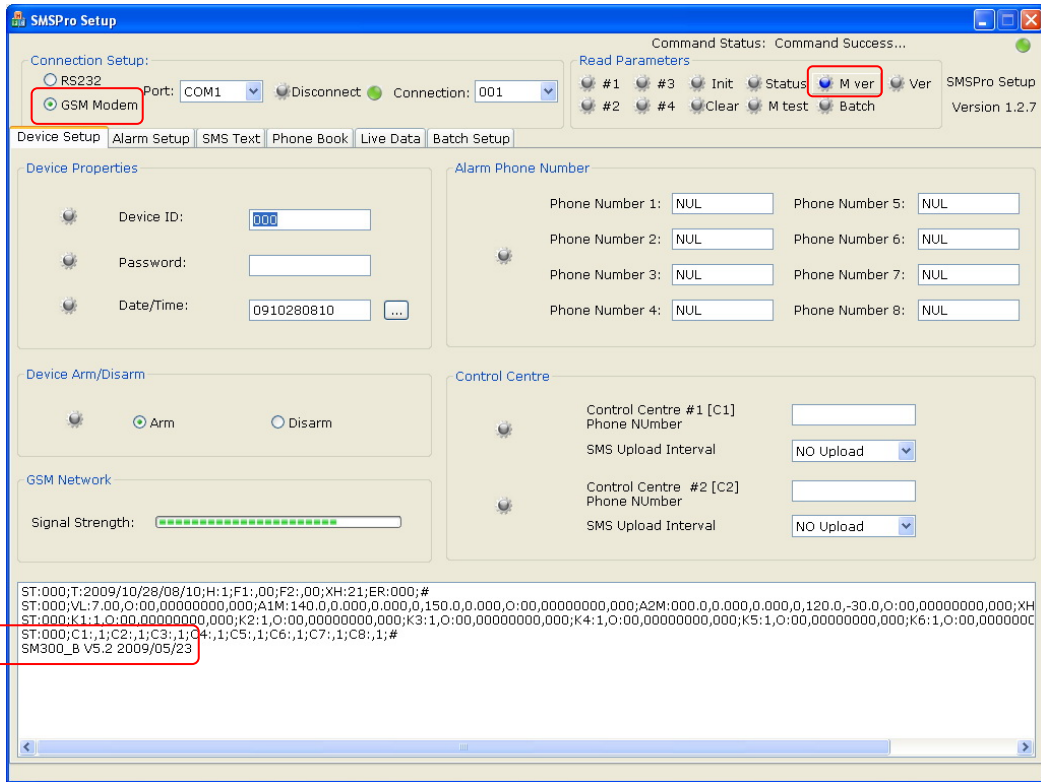
Note: GSM Modem GS300 is purchased separately.

- Click button [#1], “Command in Progress” will be displayed.
- Since command is sent by GSM modem to SMS Alert Controller by SMS, progress time will be longer than local setup via RS232 port.
- Once completed, “Command Success” will be displayed and parameters will be listed and displayed.

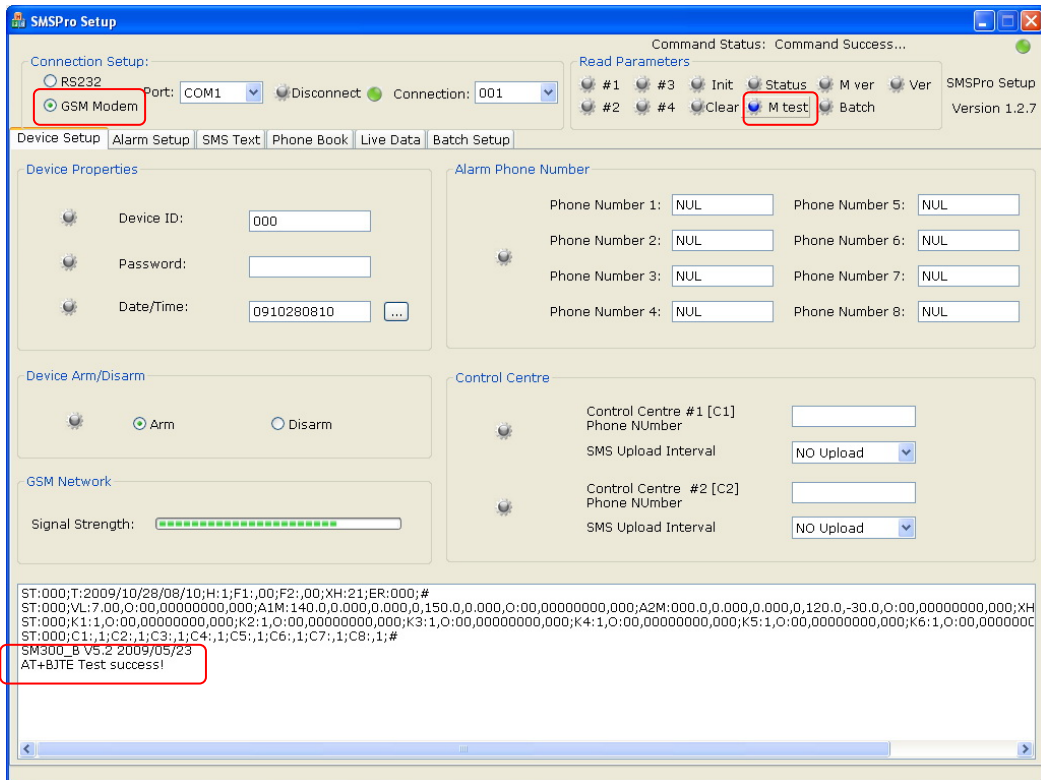


17. GSM Modem Check

- Connect the GSM Modem with “Direct Link Serial Cable”, select [GSM Modem] and COM port
- Click [Connect] button, green LED indicates the successful connection
- Click [M ver] button to check the version of GSM Modem

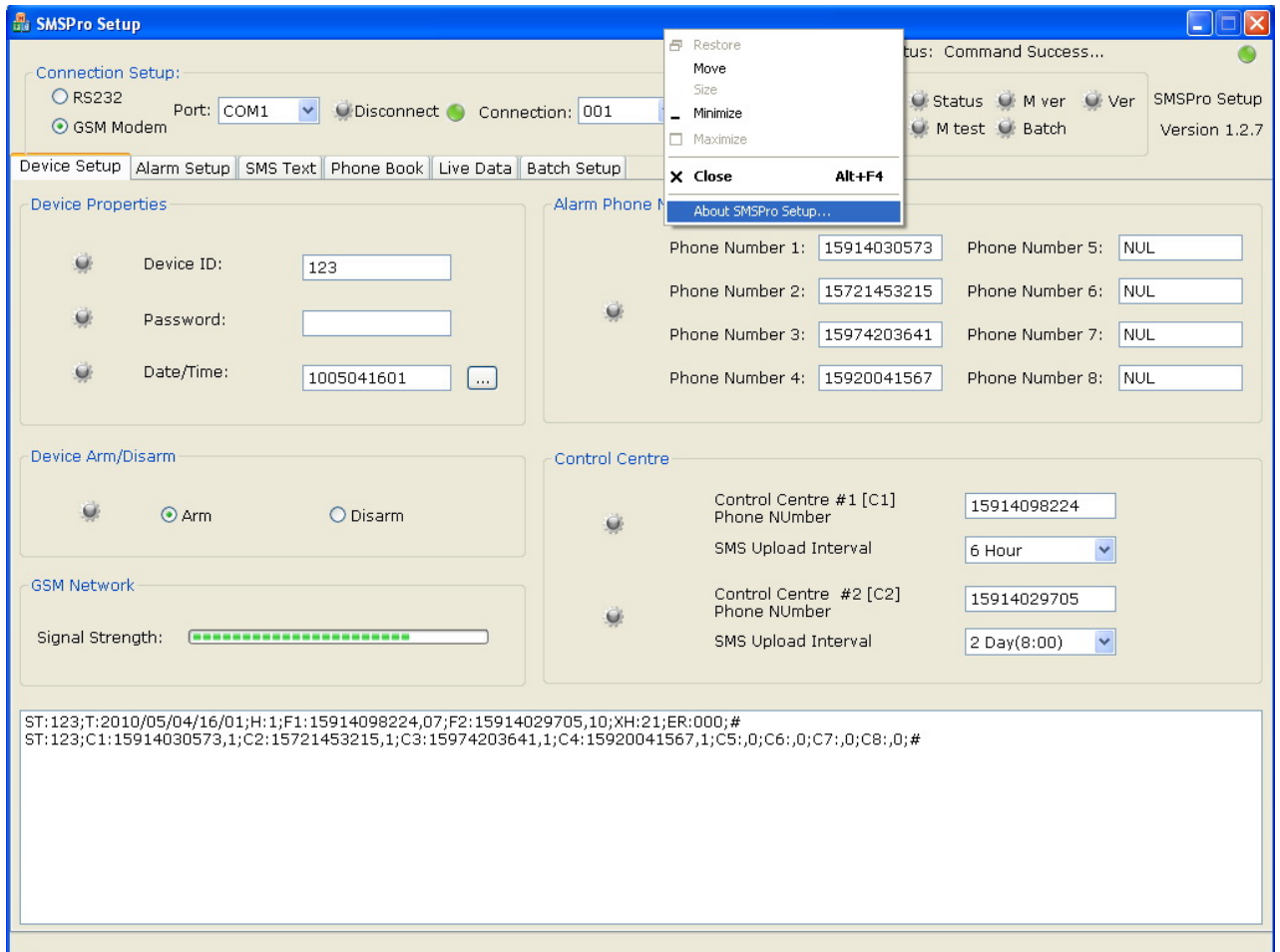


- Click [M Test] button to test the GSM Modem



18. Technical Support

Always report the Product Key SN when contact with our technical support.



19. Manufacturer's Disclaimer Statement

The information in this document is subject to change without notice and does not represent a commitment on the part of the vendor. No warranty or representation, either expressed or implied, is made with respect to the quality, accuracy or fitness for any particular purpose of this document. The manufacturer reserves the right to make changes to the content of this document and/or the products associated with it any time without obligation to notify any person or organization of such changes. In no event will the manufacturer be liable for direct, indirect, special, incidental or consequential damages arising out of the use or inability to use this product or documentation, even if advised of the possibility of such damages. This document contains materials protected by copyright. All rights are reserved. No part of this manual may be reproduced or transmitted in any form, by any means or for any purpose without expressed written consent of its authors. Product names appearing in this document are mentioned of identification purposes only. All trademarks, product names or brand names appearing in this document are registered property of their respective owners.

Trademarks

3GTrack and SMS Pro are the registered trademarks of 3gtrack.com

20. END USER LICENSE AGREEMENT

1. Thank you for selecting <SMSPro_Setup software> (the "Software"). This software license agreement (Agreement) is a legal agreement between you ("you", "licensee"), and Sirius Microsystems Co. (Developer, we, our or us) that describes the terms and conditions applicable to your use of the Software. By clicking ACCEPT, you indicate that you have read and understood and assent to be bound by the terms of this Agreement. If you do not agree to the terms of this Agreement, you are not granted any rights whatsoever in the Software, and you will not be able to access or use the Software.
2. LICENSE GRANT AND RESTRICTIONS. Subject to the terms and conditions of this Agreement, including the payment of the applicable license fees, Developer grants you a personal, limited, non-exclusive, non-transferable license, during the initial term of the license and any update term (as defined in Section 5), to electronically access and use the Software for which the applicable fee has been paid by you.

You are not licensed or permitted under this Agreement to do any of the following and shall not allow any third party to do any of the following: (i) access or attempt to access any other Developer systems, programs or data that are not made available for public use; (ii) copy, reproduce, republish, upload, post, transmit, resell or distribute in any way the material from the our site; (iii) permit any third party to benefit from the use or functionality of the Software via a rental, lease, timesharing, service bureau, or other arrangement; (iv) transfer any of the rights granted to you under this Agreement; (v) work around any technical limitations in the Software, use any tool to enable features or functionalities that are otherwise disabled in the Software, or decompile, disassemble, or otherwise reverse engineer the Software except as otherwise permitted by applicable law; (vi) perform or attempt to perform any actions that would interfere with the proper working of the Software, prevent access to or the use of the Software by Developer's other licensees or customers, or impose an unreasonable or disproportionately large load on Developer's infrastructure; or (vii) otherwise use the Software except as expressly allowed under this Section 2.

"Server" means a single physical computer of a type that meets the specifications as set forth in the applicable product documentation. Multiple computers that share processing power or operate in a networked configuration as a single logical computer, such as a "server farm" or similar arrangement, constitute multiple Servers requiring multiple licenses for the purpose of this EULA.

"Software License U-Key" means, if applicable, a USB protection key hardcoded with a serial number issued to you by us to activate and use the Software. A separate, additional Software License U-Key may be required to activate and use each Additional License.

3. RESERVATION OF RIGHTS AND OWNERSHIP. The Software is licensed not sold, and Developer reserves all rights not expressly granted to you in this Agreement. The Software is protected by copyright, trade secret and other intellectual property laws. Developer and its licensors own the title, copyright, and other worldwide intellectual property rights in the Software and all copies of the Software. This Agreement does not grant you any rights to trademarks or service marks of Developer.

4. LICENSE. The Software is licensed on a life time basis. The Software will be deemed accepted by you upon acceptance of this Agreement and payment of the license fee for the Software. Access to the Software will begin after your acceptance of this Agreement and after Developer receives and processes all the information, including the payment information to cover the license fee to obtain access to the Software.
5. UPDATE. This EULA does not give you any rights to any updates or upgrades to the Software or to any extensions or enhancements to the Software developed by us at any time in the future.

Support or any update services (for example, Software maintenance, service information, help content, bug fixes, or maintenance releases etc.) of the Software that Developer provides or makes available to you may be offered separately.

6. DISCLAIMER OF WARRANTIES. EXCEPT AS EXPRESSLY PROVIDED HEREIN, THE SOFTWARE, SERVICES, AND ANY CONTENT ACCESSIBLE THROUGH THE SOFTWARE ARE PROVIDED "AS-IS" AND, TO THE MAXIMUM EXTENT PERMITTED BY APPLICABLE LAW, DEVELOPER, ITS AFFILIATES, LICENSORS, THIRD-PARTY CONTENT OR SERVICE PROVIDERS, DEALERS AND SUPPLIERS (COLLECTIVELY, "SUPPLIERS") DISCLAIM ALL GUARANTEES AND WARRANTIES, WHETHER EXPRESS, IMPLIED OR STATUTORY, REGARDING THE SOFTWARE, SERVICES, CONTENT, AND RELATED MATERIALS, INCLUDING ANY WARRANTY OF FITNESS FOR A PARTICULAR PURPOSE, TITLE, MERCHANTABILITY, AND NON-INFRINGEMENT. DEVELOPER DOES NOT WARRANT THAT THE SOFTWARE IS SECURE OR FREE FROM BUGS, VIRUSES, INTERRUPTION, OR ERRORS, OR THAT THE SOFTWARE WILL MEET YOUR REQUIREMENTS. FURTHER, DEVELOPER DOES NOT WARRANT ACCESS TO THE INTERNET OR TO ANY OTHER SERVICE OR CONTENT OR DATA THROUGH THE SOFTWARE. SOME STATES DO NOT ALLOW THE EXCLUSION OF IMPLIED WARRANTIES, SO THE ABOVE EXCLUSIONS MAY NOT APPLY TO YOU. IN THAT EVENT, ANY IMPLIED WARRANTIES ARE LIMITED IN DURATION TO 60 DAYS FROM THE DATE OF PURCHASE OR DELIVERY OF THE SOFTWARE, AS APPLICABLE. HOWEVER, SOME STATES DO NOT ALLOW LIMITATIONS ON HOW LONG AN IMPLIED WARRANTY LASTS, SO THE ABOVE LIMITATION MAY NOT APPLY TO YOU. THIS WARRANTY GIVES YOU SPECIFIC LEGAL RIGHTS, AND YOU MAY HAVE OTHER RIGHTS THAT VARY FROM STATE TO STATE.
7. LIMITATION OF LIABILITY AND DAMAGES. THE ENTIRE CUMULATIVE LIABILITY OF DEVELOPER, ITS SUPPLIERS, AND SERVICES PROVIDERS FOR ANY REASON ARISING FROM OR RELATING TO THIS AGREEMENT SHALL BE LIMITED TO THE AMOUNT PAID BY YOU FOR THE SOFTWARE, UNLESS OTHERWISE SEPARATELY AGREED BY DEVELOPER IN WRITING. TO THE MAXIMUM EXTENT PERMITTED BY APPLICABLE LAW, DEVELOPER, ITS SUPPLIERS, AND SERVICE PROVIDERS SHALL NOT BE LIABLE FOR ANY INDIRECT, SPECIAL, INCIDENTAL, EXEMPLARY, OR CONSEQUENTIAL DAMAGES OR FOR ANY DAMAGES RELATING TO LOSS OF BUSINESS, TELECOMMUNICATION FAILURES, THE LOSS, CORRUPTION OR THEFT OF DATA, VIRUSES, SPYWARE, LOSS OF PROFITS OR INVESTMENT, USE OF THE SOFTWARE WITH HARDWARE OR OTHER SOFTWARE THAT DOES NOT MEET DEVELOPER'S SYSTEMS REQUIREMENTS OR THE LIKE, WHETHER BASED IN CONTRACT, TORT (INCLUDING NEGLIGENCE), PRODUCT LIABILITY OR OTHERWISE, EVEN IF DEVELOPER, ITS SUPPLIERS, SERVICE PROVIDERS, OR ITS REPRESENTATIVES HAVE BEEN ADVISED OF THE POSSIBILITY OF SUCH DAMAGES, AND EVEN IF A

REMEDY SET FORTH HEREIN IS FOUND TO HAVE FAILED OF ITS ESSENTIAL PURPOSE. SOME STATES DO NOT ALLOW THE LIMITATION AND/OR EXCLUSION OF LIABILITY FOR INCIDENTAL OR CONSEQUENTIAL DAMAGES, SO THE ABOVE LIMITATION OR EXCLUSION MAY NOT APPLY TO YOU.

8. **AMENDMENT.** Developer shall have the right, to change or add to the terms of its Agreement at any time, (provided that it is not Developer's intent that such change substantially affect the license rights granted to Licensee in Section 1 and for which consideration was paid by you) and to change, delete, discontinue, or impose conditions on any feature or aspect of Software and Services (including but not limited to Internet based services, pricing, technical support options, and other product-related policies) upon notice by any means Developer determines in its discretion to be reasonable, including posting information concerning any such change, addition, deletion, discontinuance or conditions in Software or on any Developer sponsored web site. Any use of the Software by you after Developer's publication of any such changes shall constitute your acceptance of this Agreement as modified.
9. **TERMINATION.** Your rights under this Agreement may be terminated or suspended by Developer immediately and without notice if you or any of your authorized users fail to comply with any term or condition of this Agreement. Upon termination you must immediately cease using the Software and Services. Any termination of this Agreement shall not affect Developer's rights hereunder.
10. **MISCELLANEOUS.** Except as expressly set forth in this Agreement, this Agreement is a complete statement of the agreement between you and Developer and sets forth the entire liability of Developer, its Suppliers, and service providers, and your exclusive remedy with respect to the Software, and its use. The Suppliers, agents, employees, distributors, and dealers of Developer are not authorized to make modifications to this Agreement, or to make any additional representations, commitments, or warranties binding on Developer. Any waiver of the terms herein by Developer must be in a writing signed by an authorized officer of Developer and expressly referencing the applicable provisions of this Agreement. If any provision of this Agreement is invalid or unenforceable under applicable law, then it shall be changed and interpreted to accomplish the objectives of such provision to the greatest extent possible under applicable law, and the remaining provisions will continue in full force and effect. This Agreement will be governed by Hong Kong law as applied to agreements entered into and to be performed, without regard to its choice of law or conflicts of law principles that would require the application of law of a different jurisdiction, and applicable federal law. Headings are included for convenience only, and shall not be considered in interpreting this Agreement. As used in this Agreement, the word including means including but not limited to. This Agreement does not limit any rights that Developer may have under trade secret, copyright, patent or other laws.