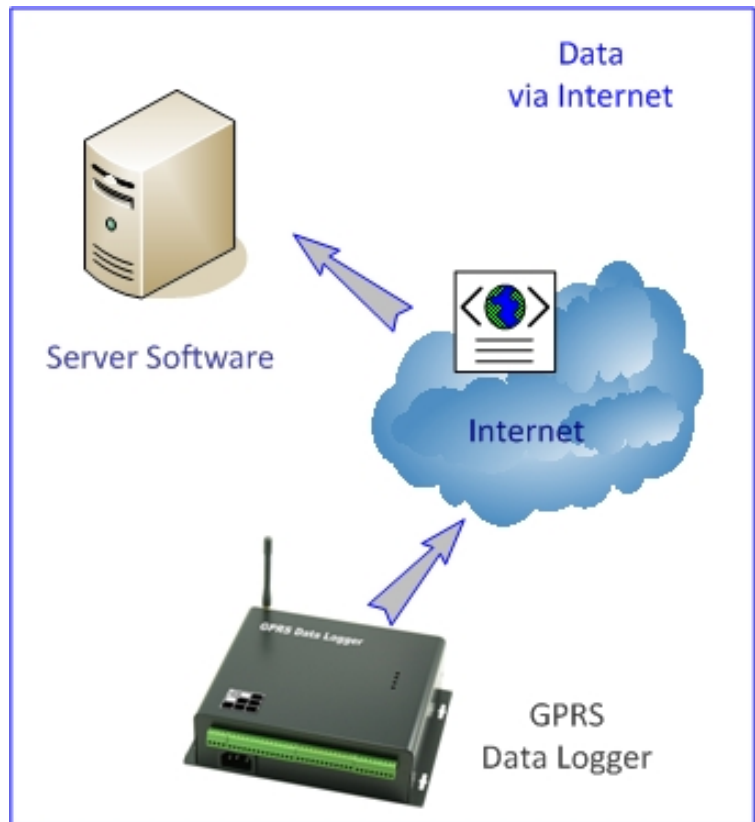


Dynamic Domain Name

Operation Guide

How it works with 3GTrack Data Logger?



i This manual is not necessary when static (fixed) IP is used in Server.

Contents

| | |
|--|----|
| 1. How to get data from GPRS Data Logger? | 3 |
| 2. How does the Data Logger find the location of server? | 4 |
| 3. Before Installation | 4 |
| 4. About using Dynamic Domain Name | 5 |
| 5. Dynamic Domain Name Registration | 6 |
| 6. Updating IP in Server..... | 7 |
| 7. Updating IP in Router | 8 |
| 8. Port Setting in Router..... | 8 |
| 9. Data Logger Setup | 9 |
| 10. Receiving Data..... | 10 |
| 11. Client Software..... | 11 |

1. How to get data from GPRS Data Logger?

Data can be live and historical.

There are 4 different modes of getting data from GPRS Data Logger.

- “GS828_Centre” is the Standard version of server software.
- “GS828_Server” is the Premium version of server software.

This manual is mainly describing the use of “GS828_Centre” software in getting live data via Internet.

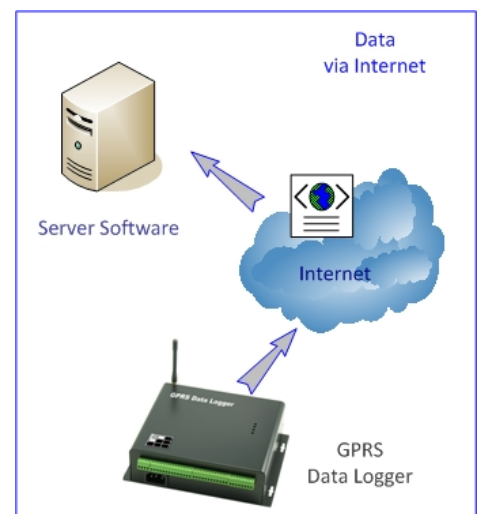
By Internet:

- Both “GS828_Centre” & “GS828_Server” software support receiving the data from GPRS Data Loggers via Internet.
- “GS828_Centre” software will save data in text file.
- “GS828_Server” software will save data in XML and other Database files.

This method is the most common way of receiving and managing the data.

However, there are two data communication protocols:

- 1) UDP
- 2) TCP



2. How does the Data Logger find the location of server?

- Server is assigned with public fixed IP address [or static IP]
- Server points to the dynamic domain name

This manual describes the installation and operation of using dynamic domain name.

3. Before Installation

Hardware Requirements:

Server PC:

- Intel Core2 Duo CPU E6550 or above
- 2GB RAM, 100GB hard disk
- Windows XP Professional/Vista Premium/7
- Min. 1024 x 768 display
- Internet connection ready

SIM card

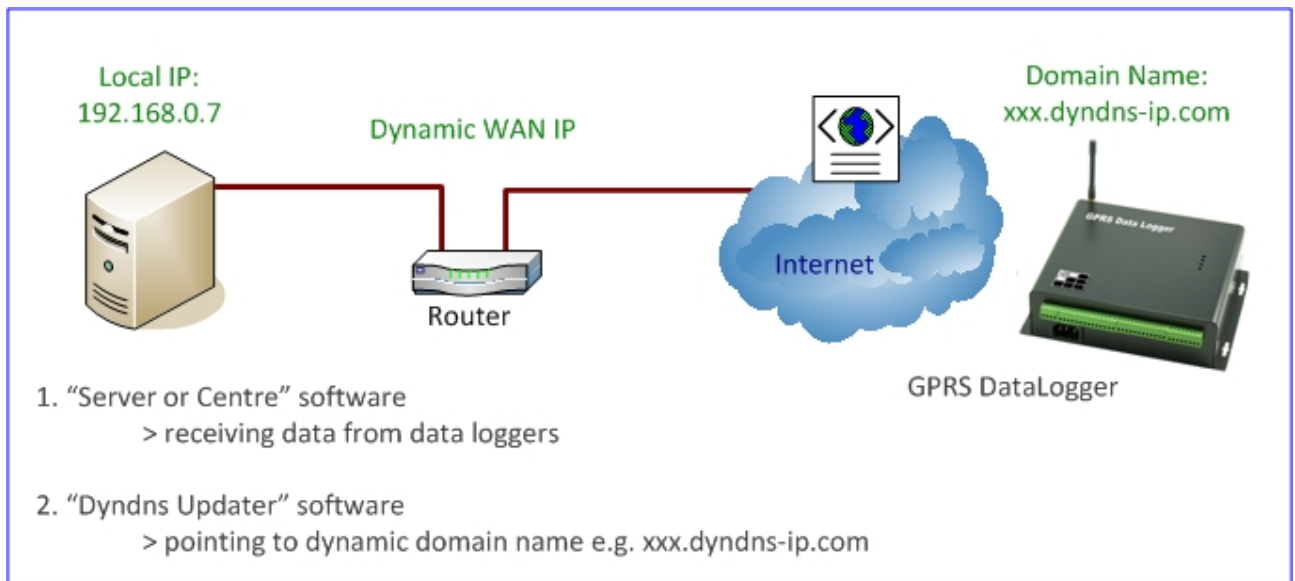
- GPRS service is activated
- Call ID service is activated
- PIN code must be removed (disabled, but not 0000)

Start Up Steps

- (1) Register Dynamic Domain Name
- (2) Install IP Updating Software e.g. DynDNS Updater
- (3) Install server software e.g. Centre or Premium Server
- (4) Configure data logger

4. About using Dynamic Domain Name

Please check carefully your local network and router configuration:



In the example case of this manual:

A) GPRS Data Logger configuration should be setup as below.

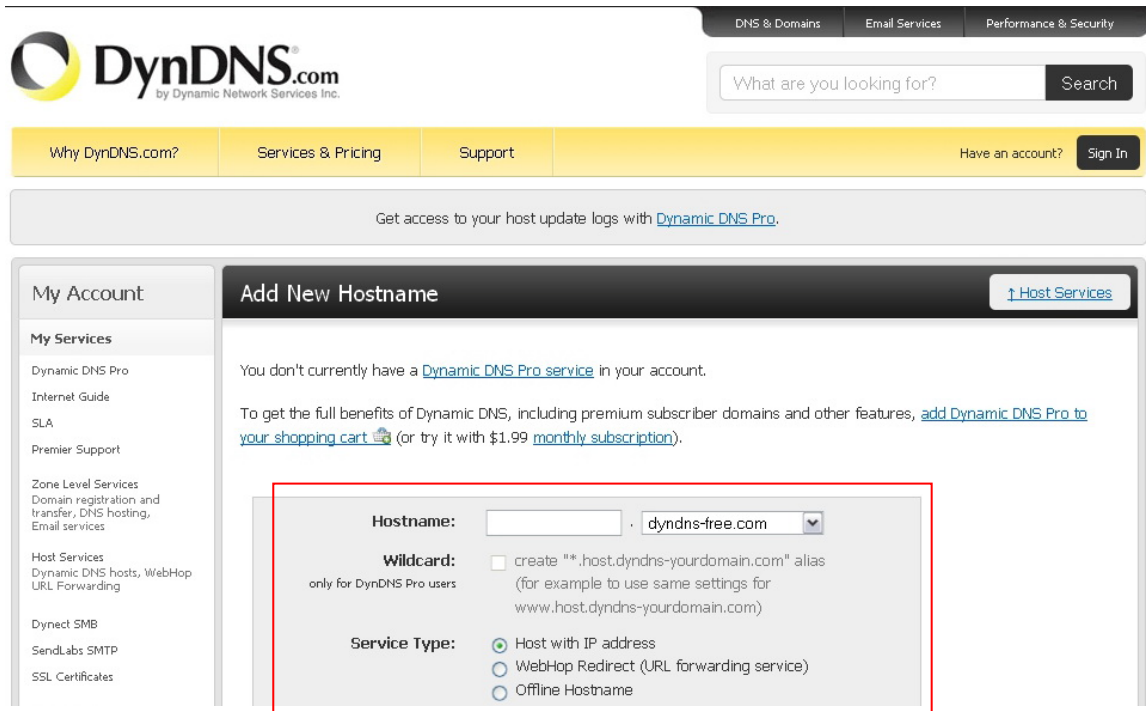
Access Point: (please check with your local service provider)
 Server Port:: 7050
 Server IP: (leave blank)
 Domain Name: gs902.dyndns-ip.com

B) Server Computer running the following software is assigned with local IP as below, but points to the dynamic domain name automatically.

1. "GS828_Centre" or "Premium Server"
 2. "Dyndns Updater"
- Local IP: 192.168.0.12
 Local Port: 7050

5. Dynamic Domain Name Registration

- There are a number of websites providing free or charged dynamic domain name.
- Here, we would quote an example using free service provided by www.dyndns.com for review.



The screenshot shows the DynDNS.com website interface. At the top, there is a navigation bar with links for 'DNS & Domains', 'Email Services', and 'Performance & Security'. Below this is a search bar with the text 'What are you looking for?' and a 'Search' button. A yellow navigation bar contains links for 'Why DynDNS.com?', 'Services & Pricing', 'Support', 'Have an account?', and 'Sign In'. A banner below the navigation bar reads 'Get access to your host update logs with [Dynamic DNS Pro](#).' The main content area is titled 'Add New Hostname' and includes a 'Host Services' link. The text in the main area states: 'You don't currently have a [Dynamic DNS Pro service](#) in your account. To get the full benefits of Dynamic DNS, including premium subscriber domains and other features, [add Dynamic DNS Pro to your shopping cart](#) (or try it with \$1.99 [monthly subscription](#)).' The form below is highlighted with a red border and contains the following fields:

- Hostname:** A text input field followed by a dropdown menu showing 'dyndns-free.com'.
- Wildcard:** A checkbox labeled 'create "*.host.dyndns-yourdomain.com" alias (for example to use same settings for www.host.dyndns-yourdomain.com)'. Below it, the text 'only for DynDNS Pro users' is displayed.
- Service Type:** Three radio button options:
 - Host with IP address
 - WebHop Redirect (URL forwarding service)
 - Offline Hostname

Register a hostname and select the host, and in our case:

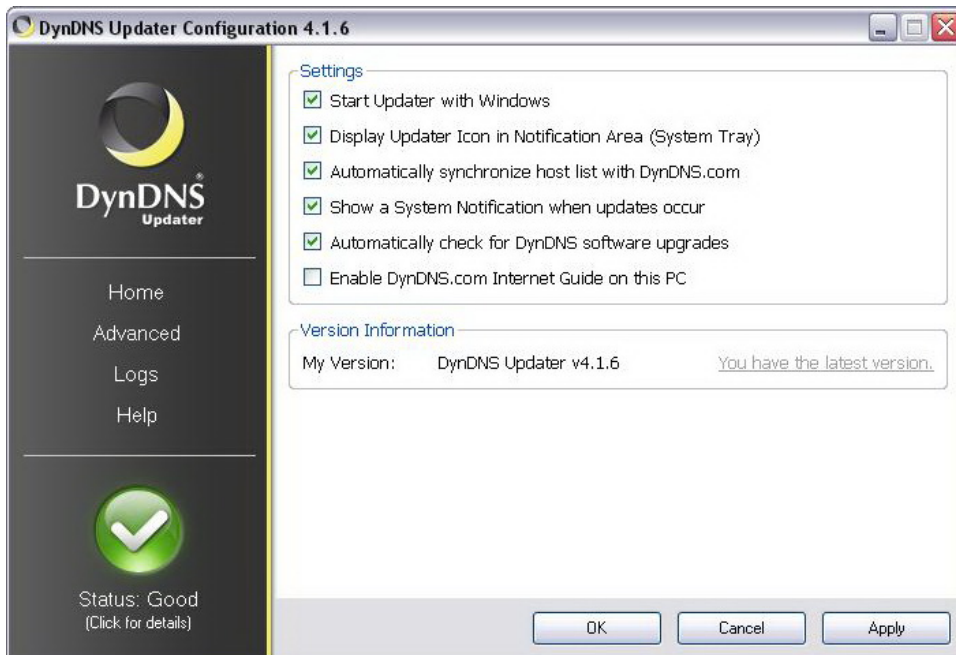
- Hostname: gs902
- Host: dyndns-ip.com

6. Updating IP in Server

- Download and run the software “DynDNS updater”



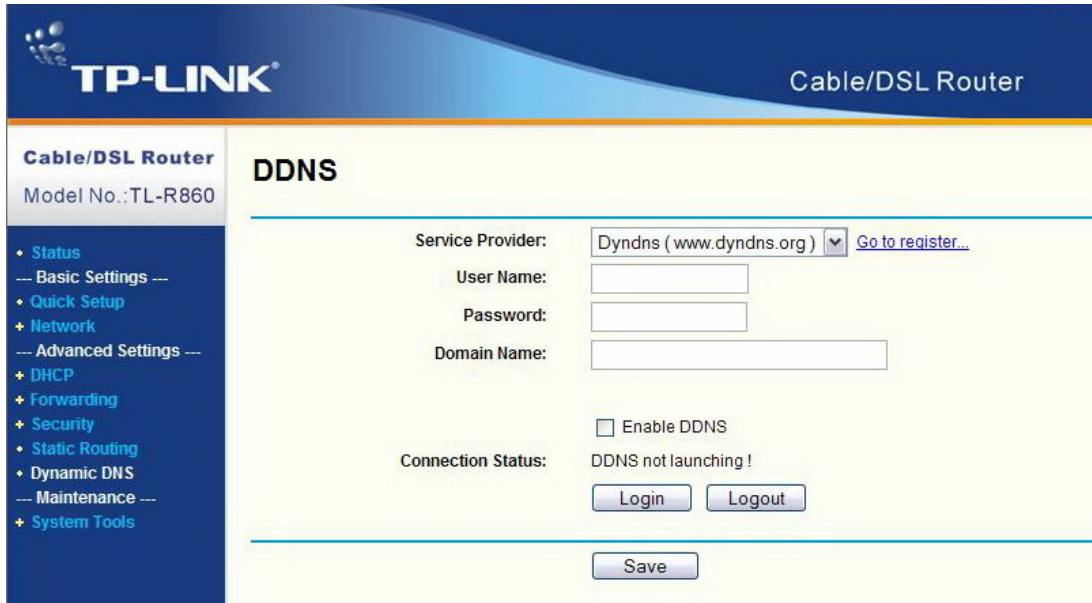
- Make sure that the server computer keeps running the “DynDNS Update”.
- It allows the server computer keeping linking to the dynamic domain name.



i Make sure that the Status is “Good” after running the DynDNS Updater.

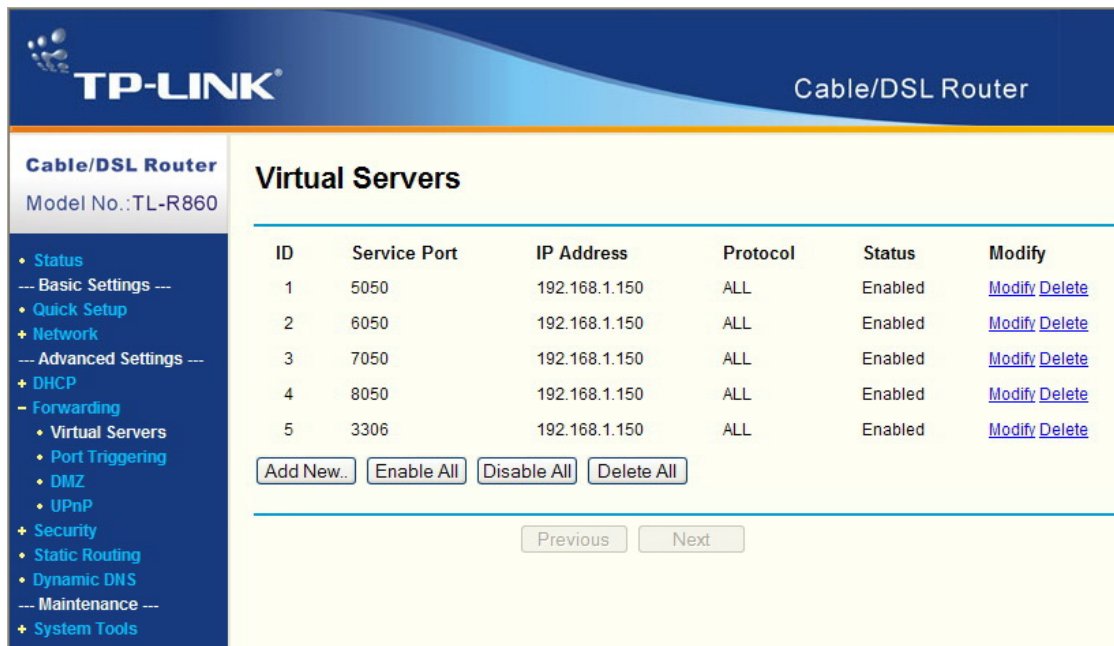
7. Updating IP in Router

- Some routers provide DDNS [dynamic domain name service]
- Configure the router with registered ddns account
- In this case, server computer does not need to run “Dyndns Updater”



8. Port Setting in Router

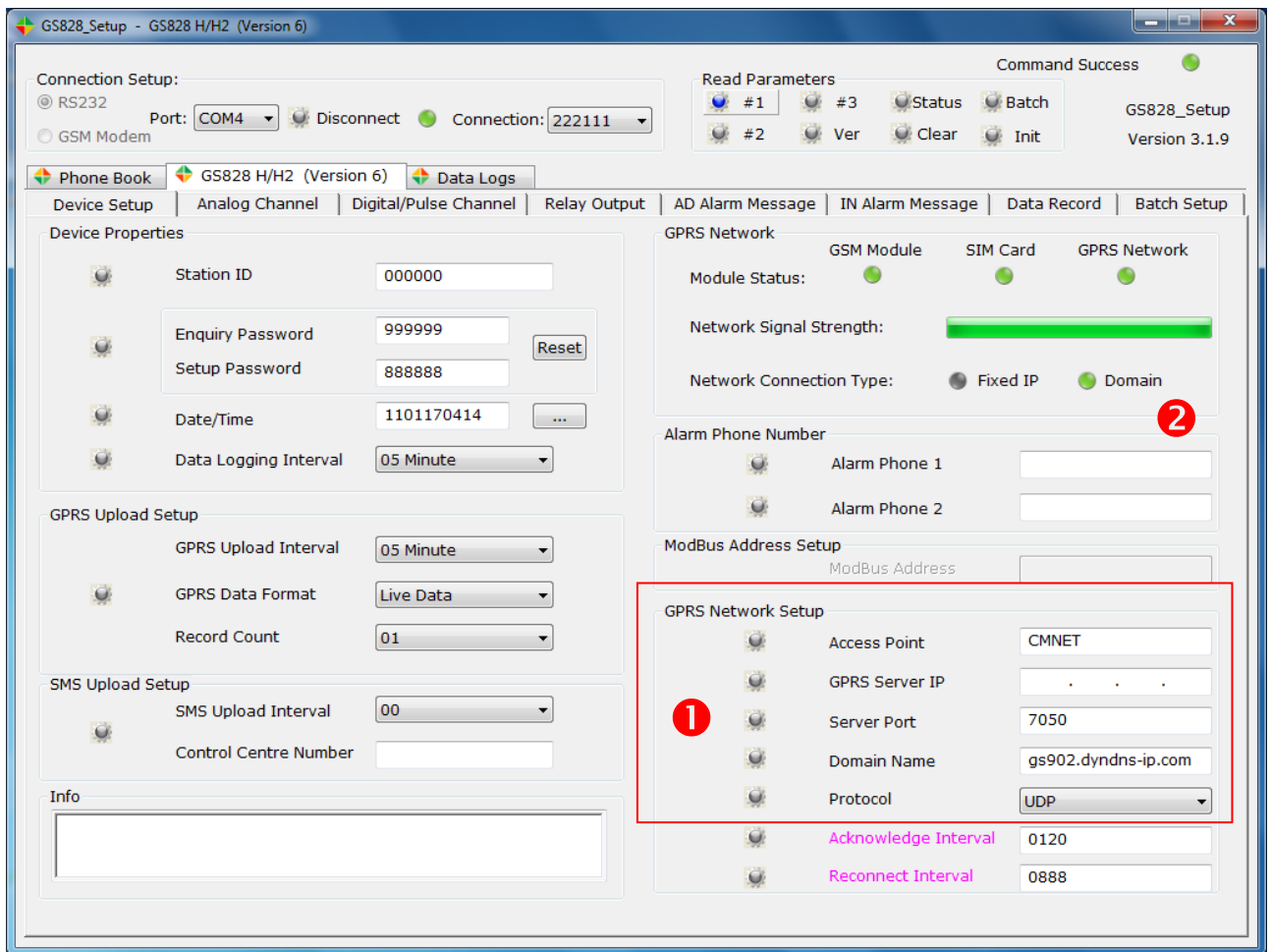
- Service Ports must be enabled in Router
 - ✓ NET Server Port
 - ✓ Server Port
 - ✓ Client Port



9. Data Logger Setup

Following parameters should be configured in the data logger:

- Access Point: (please check with your local service provider)
- Server Port: 7050
- Server IP: (leave blank)
- Domain Name: gs902.dyndns-ip.com



Click #1 button

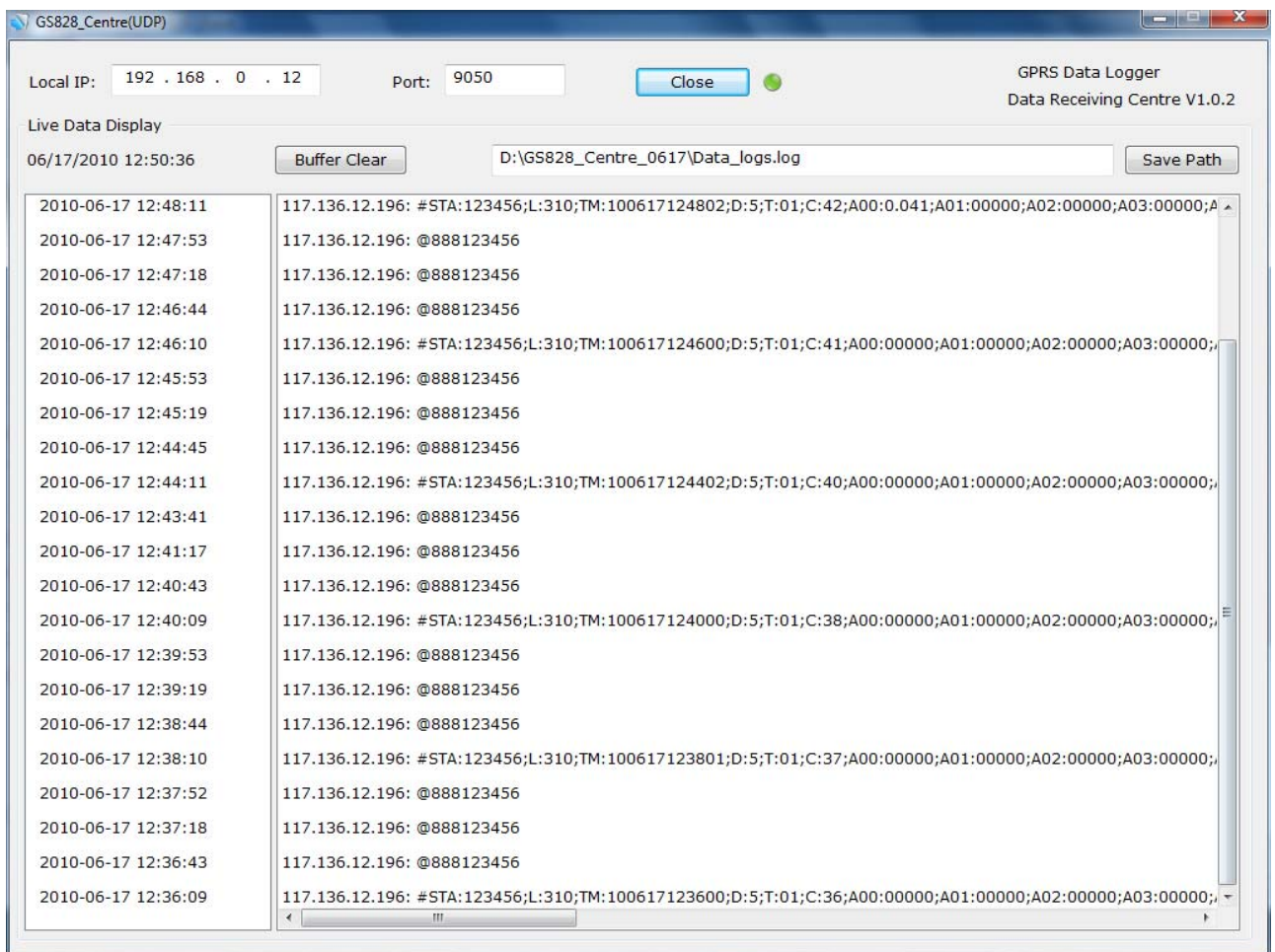
- Module Status 3 x LED: Green
- Domain LED: Green

Set GPRS upload interval: 05 minutes, and format: Live Data

Data will be uploaded to the server.

10. Receiving Data

- Run the “Centre” or “Premium Server” software in server computer
- Make sure that the computer running “Centre” software also runs the “Dyndns Updater”
- When Router DNS service is used, “Dyndns Updater” is not necessary.
- Data will be saved in the “Data_Logs.log” text file
- Only one day data will be saved, and overwritten on another day



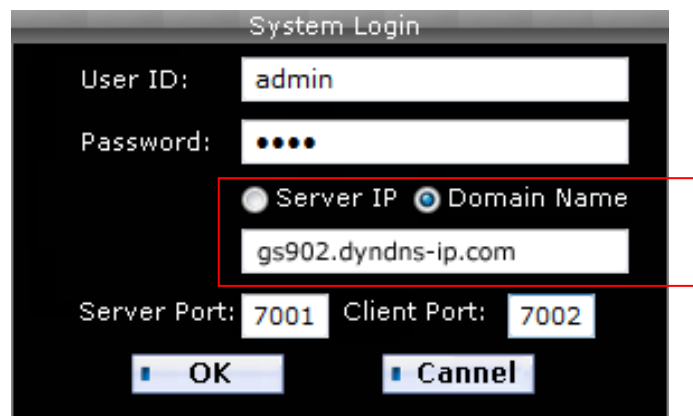
- i** Don't forget to click [Close] before exiting the software. It will release the network port for other applications.

11. Client Software

- Select the domain name
- Enter the dynamic domain name registered above



GS828 Client Software



GPS Client Software