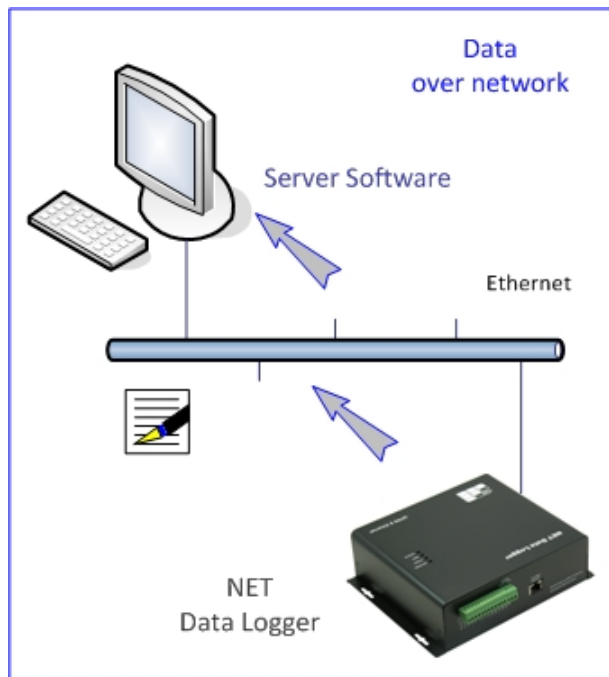


# NET Data Logger

## Centre Software Guide

UDP



GSMS-NET-HV, NET-THR-HV  
NS828-H / H2 / HX / S / S2

Revision 120228 [v1.0.4C]

## Contents

1.	How to get data from NET Data Logger? .....	3
2.	Server Version Comparison.....	5
3.	Before Installation.....	6
4.	Install the “GS828_Centre (UDP)” software .....	7
5.	Data over Ethernet.....	8
5.1	Ethernet Network Setting .....	8
5.2	Device Setup for Ethernet .....	9
5.3	Centre Setup for Ethernet.....	12
5.4	Receiving Data via Ethernet .....	13

## 1. How to get data from NET Data Logger?

Data can be live and historical.

There are 4 different modes of getting data from NET Data Logger.

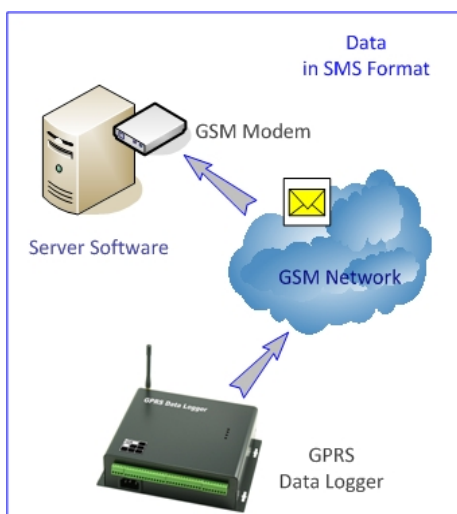
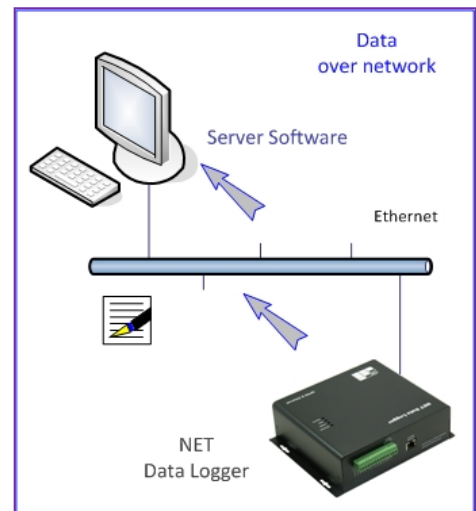
- “GS828\_Centre” - data receiving software via Internet & Ethernet.
- “GS828\_Server” - data receiving software via Internet, Ethernet & SMS.

This manual is mainly describing the use of “GS828\_Centre” software in getting live data via Ethernet and Internet.

### A) Ethernet:

- Both “GS828\_Centre” and “GS828\_Server” software support receiving the data from NET Data Loggers via Ethernet.
- “GS828\_Centre” software saves data in text file daily.
- “GS828\_Server” software saves data in XML and other Database files.
- Only UDP is supported over Ethernet

This method is usually for LAN application.



### B) SMS by GSM Modem connecting to PC:

- “GS828\_Server” software supports receiving data from NET Data Logger via SMS.
- The software will keep receiving data via SMS from a number of NET Data Loggers, and storing into the server database

This method is suitable for back up data on top of data via Internet.

## C) Internet:

This method is the most common way of receiving and managing the data.

- Both “GS828\_Centre” & “GS828\_Server” software support receiving the data from GPRS NET Data Loggers via Internet.
- “GS828\_Centre” software saves data in text file daily.
- “GS828\_Server” software saves data in XML and other Database files.

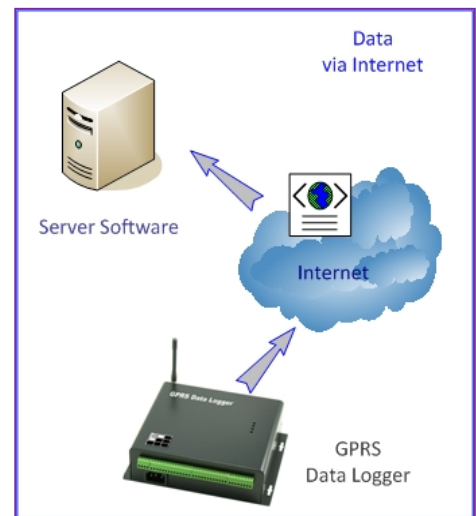
There are two data communication protocols over Internet:

## 1) UDP

- Most efficient and effective

## 2) TCP

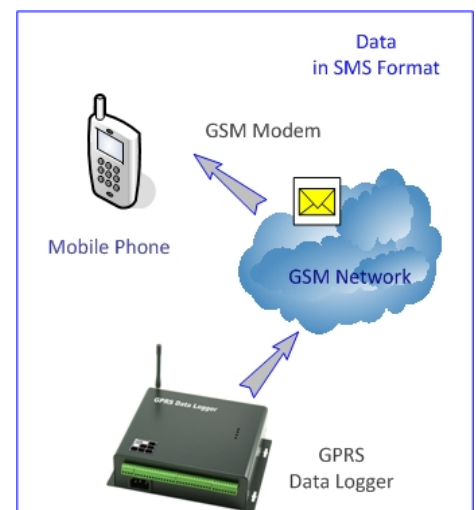
- High data security



## D) SMS by Mobile Phone:

- Please refer the command list to the operation manual of SMS NET Data Logger.
- User sends SMS command to NET Data Logger which will reply a SMS message with detail live data
- User receives the data on the SMS message by the mobile phone

This method is inefficient and seldom used. But it provides an easy check of operation status of NET Data Logger with user mobile phone.



## 2. Server Version Comparison

Below is the comparison table of two different versions of Server Software:

Edition	Standard	Premium
<b>[A] Server Software Name</b>	GS828_Centre	GS828_Server
Receive Data via SMS	—	Yes
Receive Data via Internet & Ethernet	Yes	Yes
Receive Data via RS232 Port	—	Yes
Live Data Display	Yes	Yes
Database	Daily text	Access / MySQL
		SQL / Oracle
XML	—	Yes
Data Export to Excel	—	Yes
Remote Command via SMS	—	Yes
Remote Command via Internet	—	Yes
Schedule Command	—	Yes
Batch Command	—	Yes
Temperature & Humidity Alert	—	Yes
Send Alarm Alert via TCP network	—	Yes
Send Alarm Alert via email	—	Yes
Send Alarm Alert via SMS	—	Yes
Alert Users Grouping	—	Yes
Alert Emails Grouping	—	Yes
Client Software support	—	Yes
Max. Data Loggers simultaneous support	99	99999
Data Loggers Management	—	Yes
User Authentication & Management	—	Yes
Network Client Authentication & Management	—	Yes
Web Based Access support	—	Yes
SDK for user development	—	Yes
<b>[B] Client Software</b>	N.A.	Bundled
Live Data Display	—	Yes
Alarm Alert	—	Yes
Graphic Display of Temperature & Humidity	—	Yes
Temperature & Humidity Hi/Low Alert	—	Yes
Historical Data Access	—	Yes

### 3. Before Installation

Hardware Requirements:

Server PC:

- Intel Core2 Duo CPU E6550 or above
- 2GB RAM, 100GB hard disk
- Windows XP Professional/Vista Premium/7
- Min. 1024 x 768 display

SIM card [only necessary when SMS data is needed]

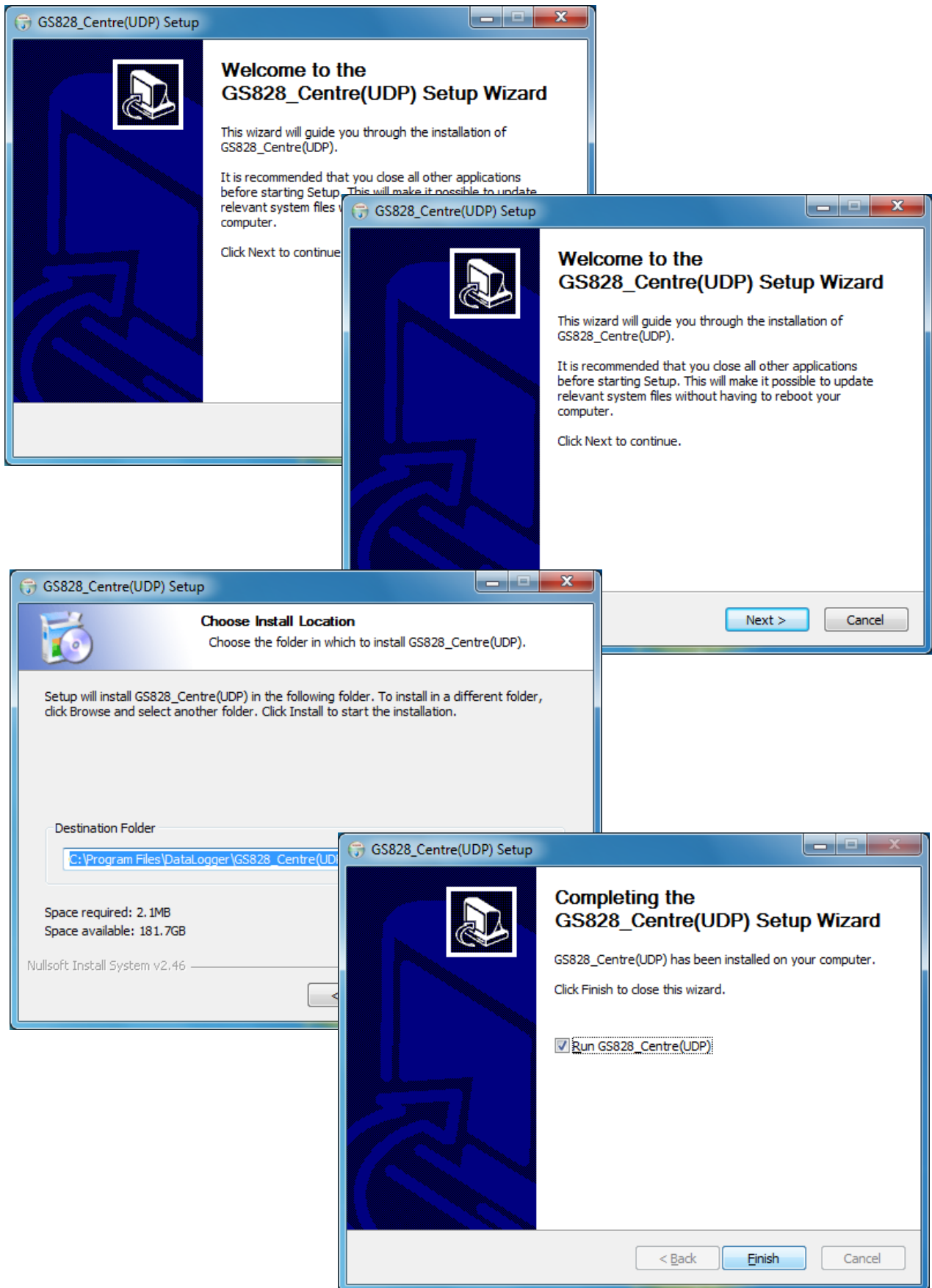
- SMS service is activated
- Caller ID service is activated
- PIN code must be removed (disabled, but not 0000)

Start Up Steps

- (1) Get the NET Data Logger ready
- (2) Get the PC hardware ready
- (3) Install "GS828\_Centre (UDP)" software

#### 4. Install the “GS828\_Centre (UDP)” software

- Run GS828\_Centre (UDP), and follow the instructions



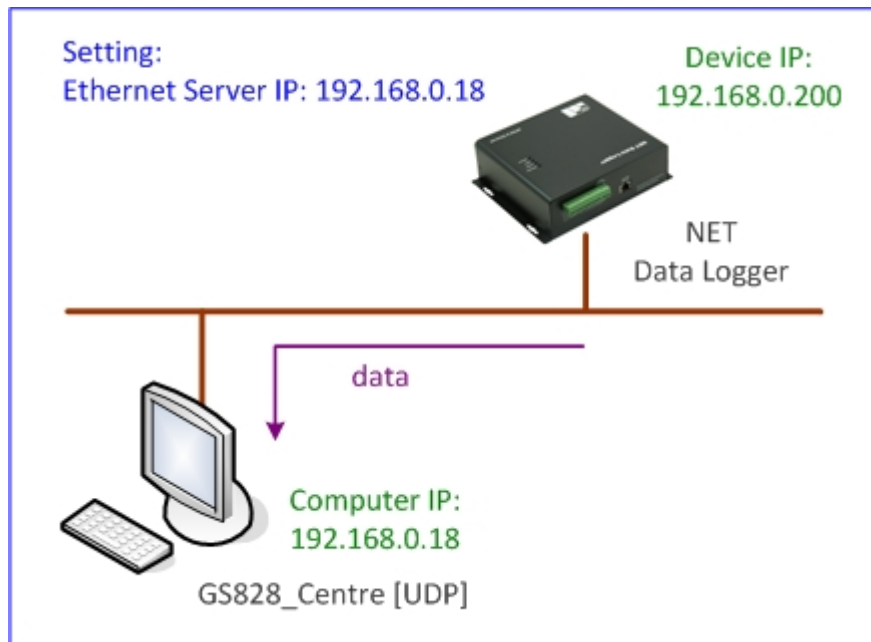
## 5. Data over Ethernet

Model: GS828-NH / NH2 / NHX / NS / NS2

NS828-H / H2 / HX / NS / NS2

### 5.1 Ethernet Network Setting

Please check carefully your local network and router configuration:



In the example case of this manual:

A) NET Data Logger configuration should be setup as below.

Device IP: 192.168.0.200

Device Port: 5000

Ethernet Server IP: 192.168.0.18

Server Port: 9061

B) Computer running the GS828\_Centre Software should have the following local IP as below.

GS828 Centre IP: 192.168.0.18

Local Port: 9061

Note: all the ports above must be opened in router.



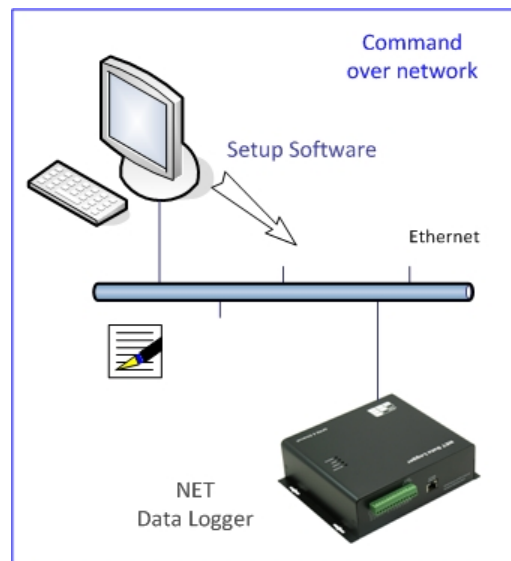
## 5.2 Device Setup for Ethernet

- Using “GS828X\_Setup” software to configure NET Data Logger properly
- Using “GS828\_Centre [UDP]” to receive the data from NET Data Logger

Example case in this manual as below:

Following parameters must be configured in NET Data Logger and Computer running Centre software.

- GPRS Upload Interval
- Protocol: UDP
- Device Ethernet Properties
- Server Network Properties



### [GPRS /Ethernet Upload Setup]

- GPRS Upload Interval = Ethernet Upload Interval = “30 minutes”
- GPRS Data Format = Ethernet Data Format = “Live Data”  
“Live Data” is recommended for Ethernet Data Upload.
- Record Count is recommended as “1”

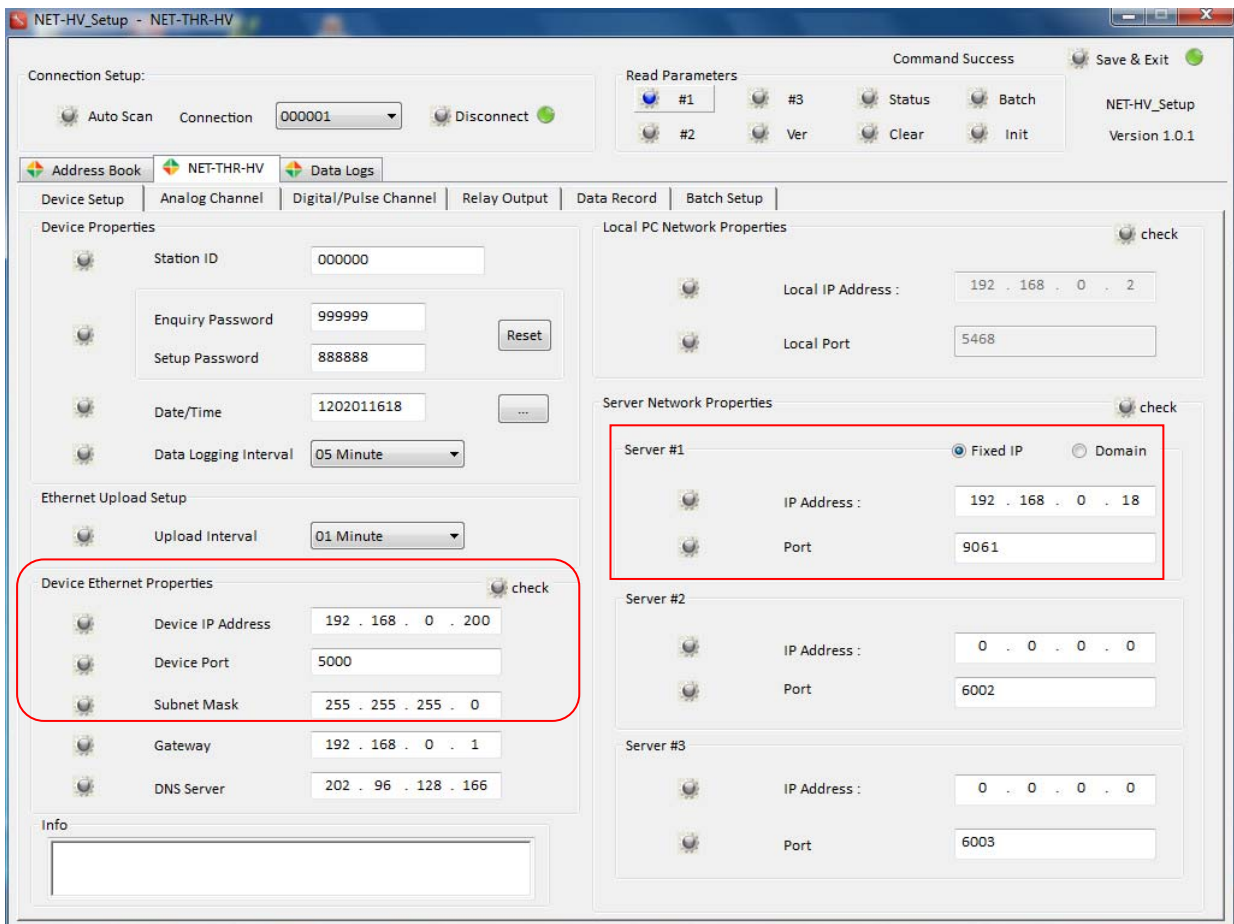
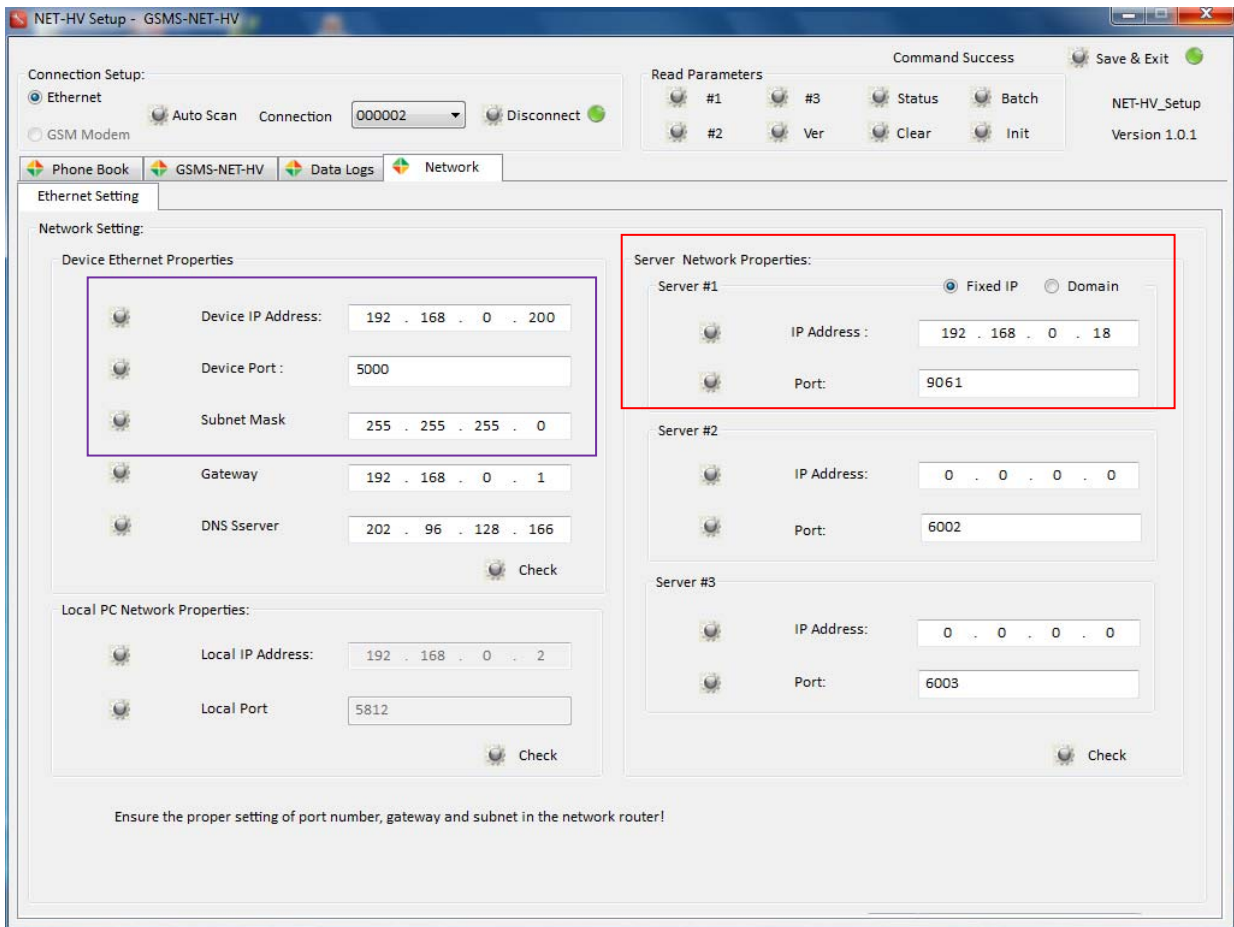
### [Device Ethernet Properties]

- Device: NS828 or GS828-NH
- Device IP Address: 192.168.0.200
- Device Port: 5000

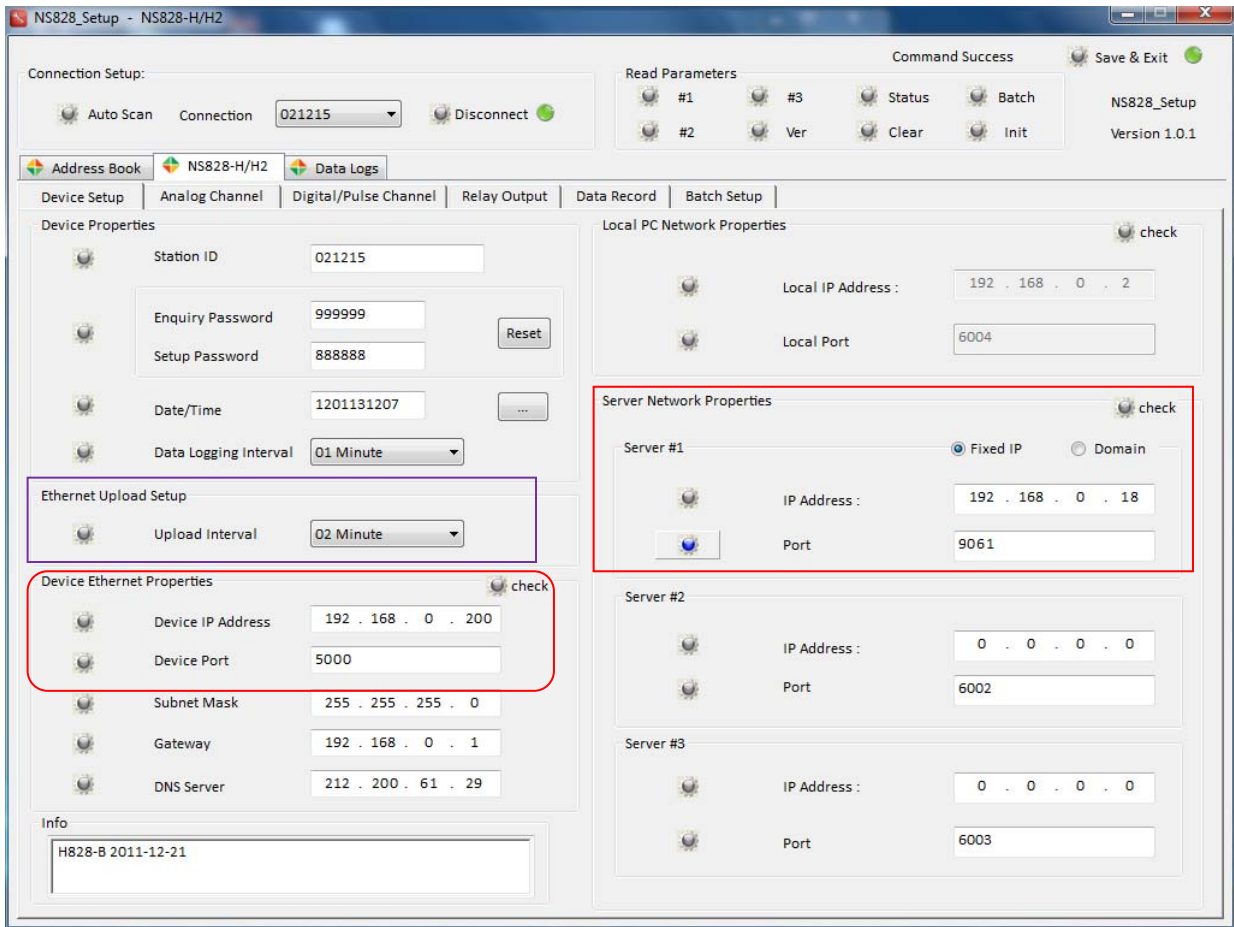
### [Ethernet Server Network Properties]

- Computer running the Centre Software
- IP Address: 192.168.0.18
- Port: 9061

[GSMS-NET-HV, NET-THR-HV]



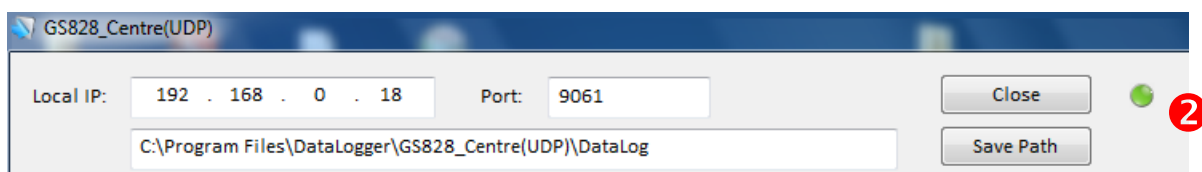
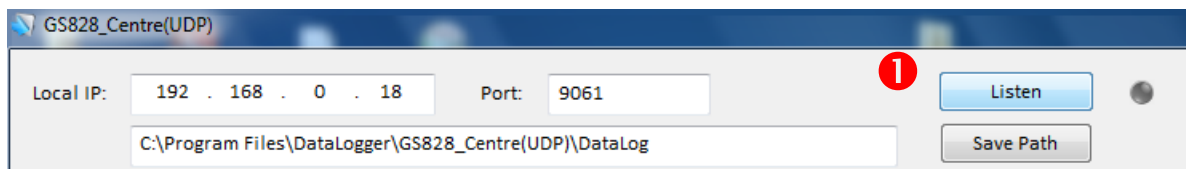
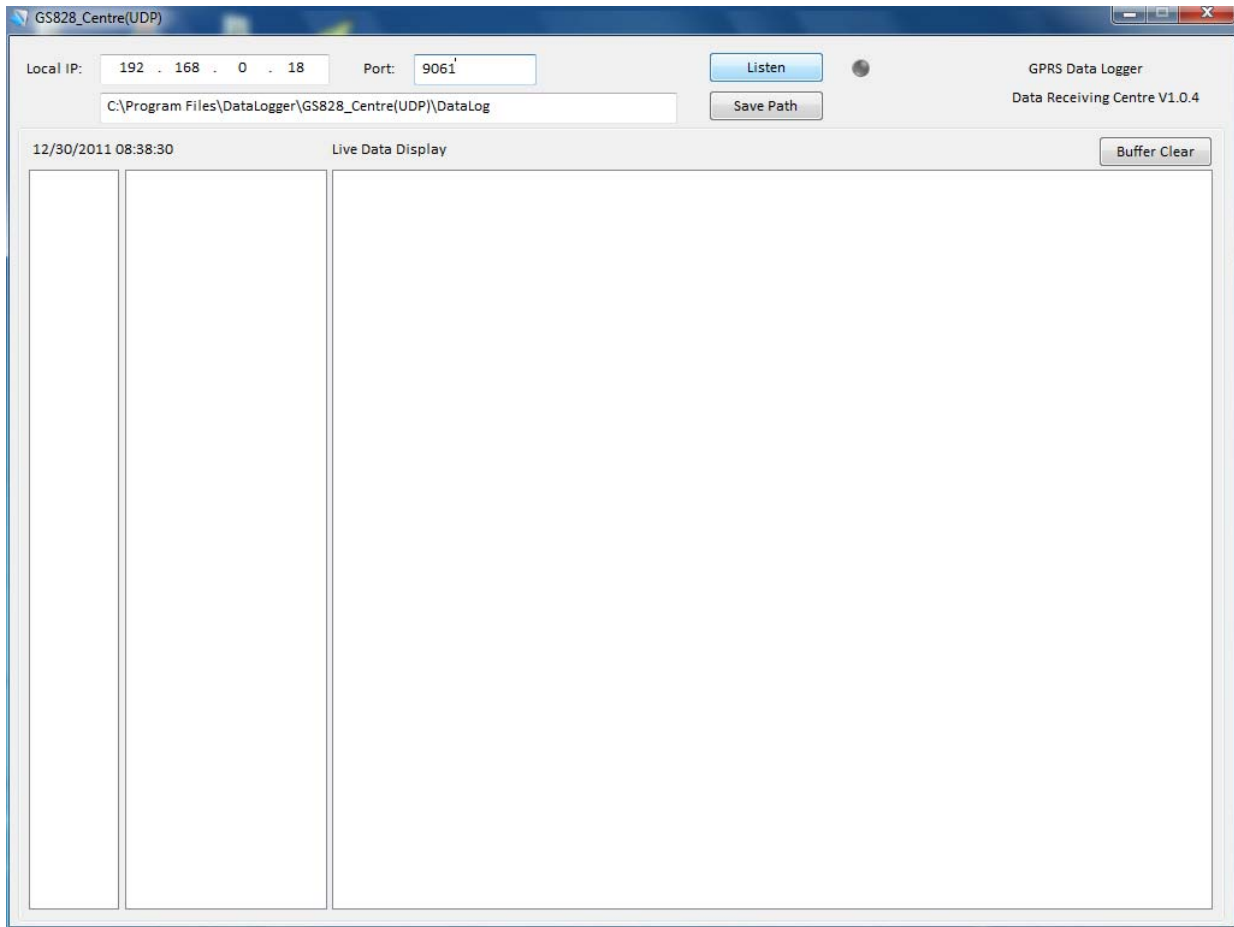
[NS828 series]



### 5.3 Centre Setup for Ethernet

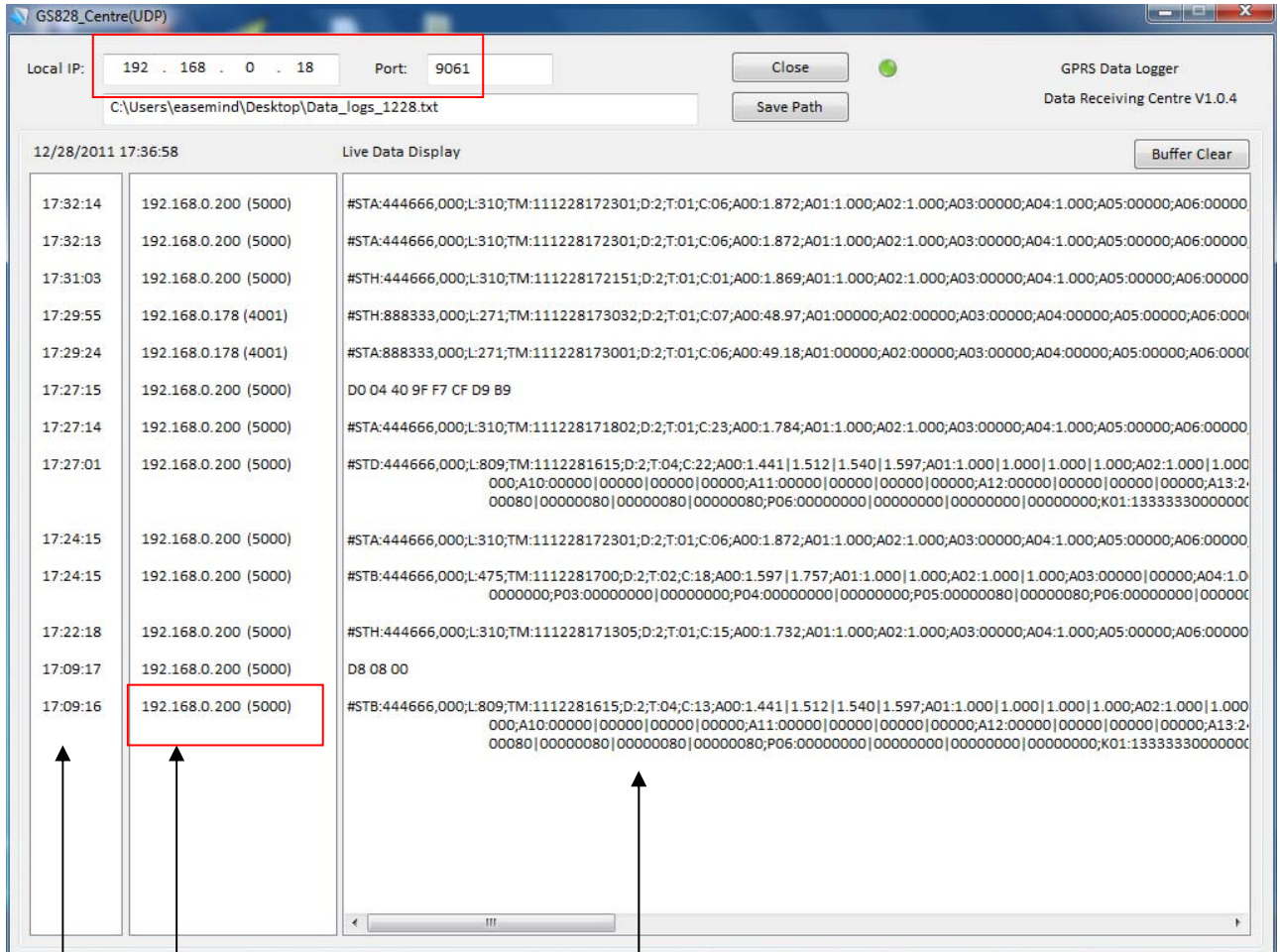
Following parameters should be configured in GS828\_Centre software:

- Local IP (depending on the LAN setup) will be automatically detected
- Port – must be same as configured in NET Data Logger
- Click [Listen] to start receiving the data
- Green LED will be ON



### 5.4 Receiving Data via Ethernet

- Data will be saved in the “Data\_Logs.log” text file
- Only one day data will be saved, and overwritten on another day



Time

Data

192.168.0.200      NET Data Logger IP  
(5000)                NET Data Logger Port

NET Data Logger IP & Port are configured in GS828\_Setup Software [Device Ethernet Properties].

**i** Don't forget to click [Close] before exiting the software. It will release the network port for other applications.